

MATERIALS

Roof & Canopy Module Section

- 1 METAL ROOF DECK WITH HIGH PERFORMANCE COATING
- 2 SINGLE LAYER ETFE MEMBRANE ROOF
- 3 EXPOSED STRUCTURAL STEEL WITH HIGH PERFORMANCE COATING
- 4 FIBERGLASS & PTFE COMPOSITE MESH PANEL SYSTEM



SPACES

- | | | | | | |
|---|--------------------------|---|--------------------------|----|-----------------------------|
| 1 | PRESS BOX | 5 | TYPICAL SUITE | 9 | SERVICE CORRIDOR |
| 2 | NATIONAL BROADCAST BOOTH | 6 | 18 YARD CLUB DINING HALL | 10 | FIELD CLUB / PLAYERS TUNNEL |
| 3 | PRESS DINING / WORKROOM | 7 | FIELD CLUB SEATING | 11 | FIELD CLUB BAR |
| 4 | OUTDOOR SUITE TERRACE | 8 | 18 YARD CLUB SEATING | 12 | WEST PLAZA |

West Stand | A | Section Axonometric at Midfield



MATERIALS

West Stand | A | Section Axonometric at Midfield

- 1

EXPOSED STRUCTURAL STEEL WITH HIGH PERFORMANCE COATING
- 2

SINGLE LAYER ETFE MEMBRANE
- 3

METAL ROOF DECK WITH HIGH PERFORMANCE COATING
- 4

FIBERGLASS & PTFE COMPOSITE MESH PANEL SYSTEM
- 5

STRUCTURAL-SEALANT-GLAZED CURTAIN WALL SYSTEM
- 6

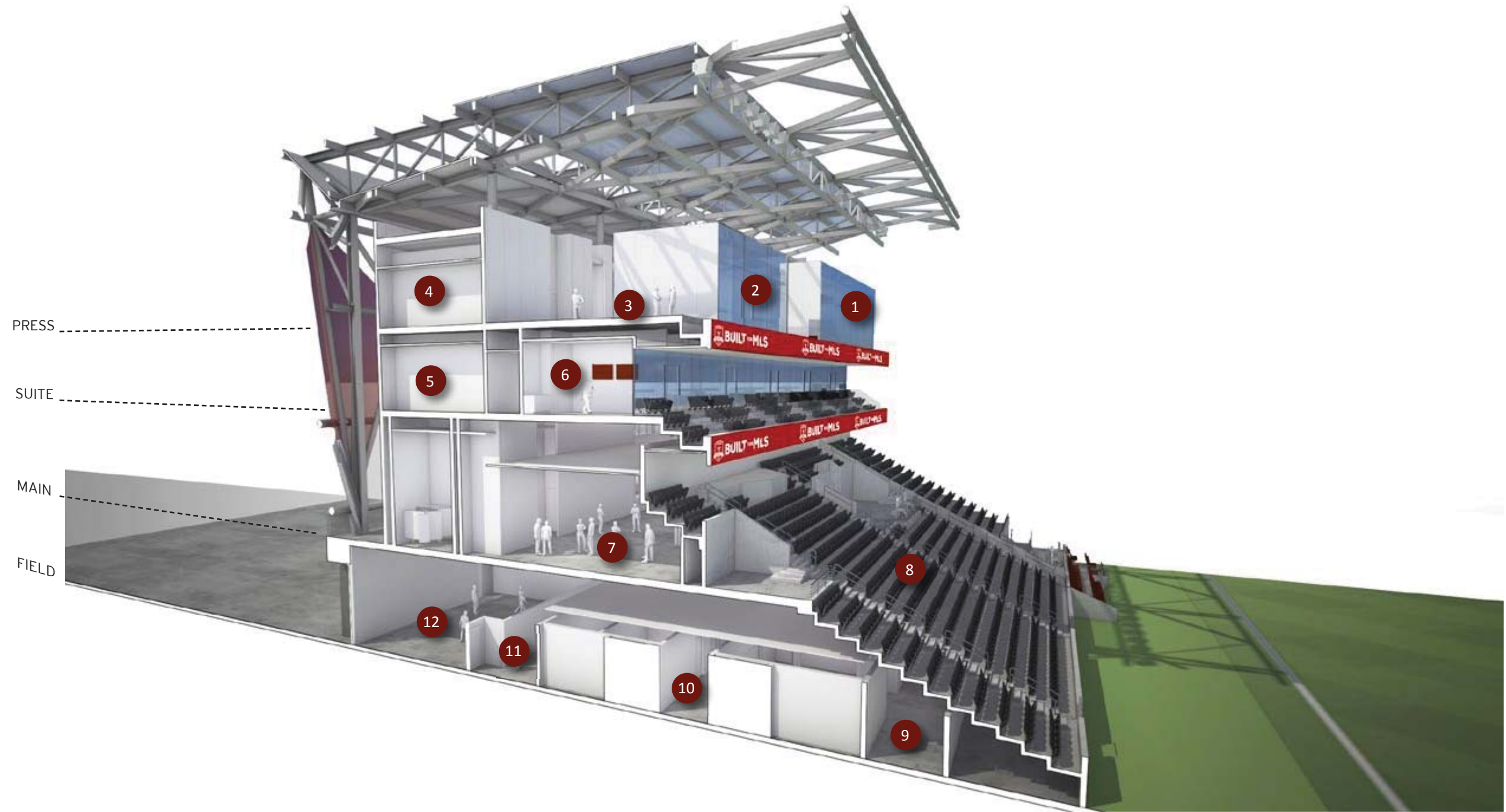
LINEAR METAL CEILING SYSTEM
- 7

OPERABLE GLASS WALL SYSTEM
- 8

PRECAST STADIA WITH FIXED SATING
- 9

SPECIAL SHAPE BRICK VENEER - ROMAN PROFILE
- 10

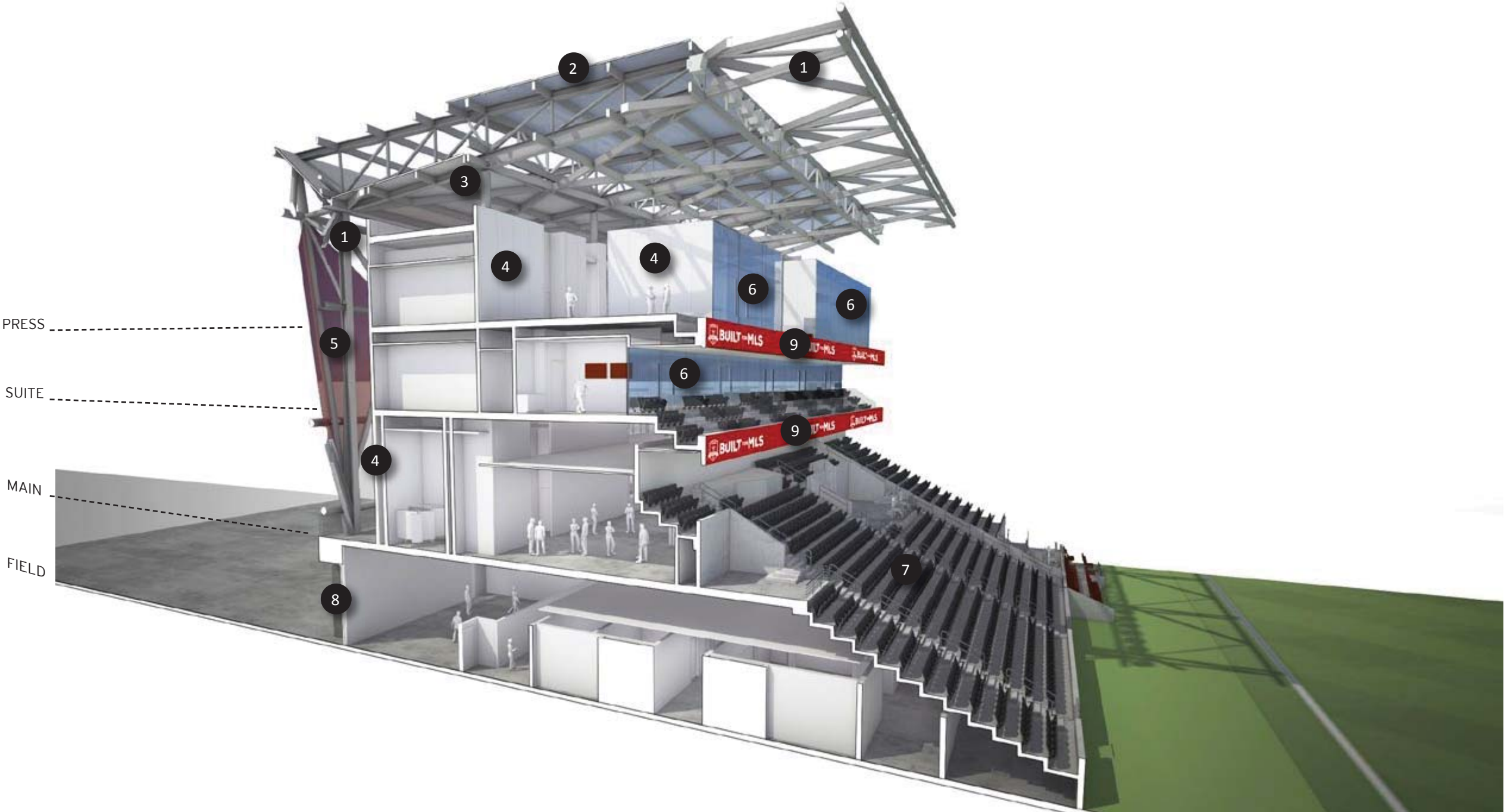
VIDEO RIBBON BOARD



West Stand | B | Section Axonometric at 18 Yard Box

SPACES

- | | | | | | |
|---|---|---|----------------------------|----|----------------------|
| 1 | PRESS BOX | 5 | SUITE LEVEL SUPPORT SPACES | 9 | SERVICE CORRIDOR |
| 2 | TEAM SUITES | 6 | TYPICAL SUITE | 10 | HOME TEAM FACILITIES |
| 3 | ROOF TERRACE | 7 | 18 YARD CLUB | 11 | PLAYERS TUNNEL |
| 4 | SUPPORT SPACES FOR FUTURE BUILD OUT. (CORE/SHELL) | 8 | 18 YARD CLUB SEATING | 12 | MEDIA INTERVIEW ROOM |



MATERIALS

West Stand | B | Section Axonometric at 18 Yard Box

- 1

EXPOSED STRUCTURAL STEEL WITH HIGH PERFORMANCE COATING
- 2

SINGLE LAYER ETFE MEMBRANE
- 3

METAL ROOF DECK WITH HIGH PERFORMANCE COATING
- 4

FORMED METAL WALL PANELS
- 5

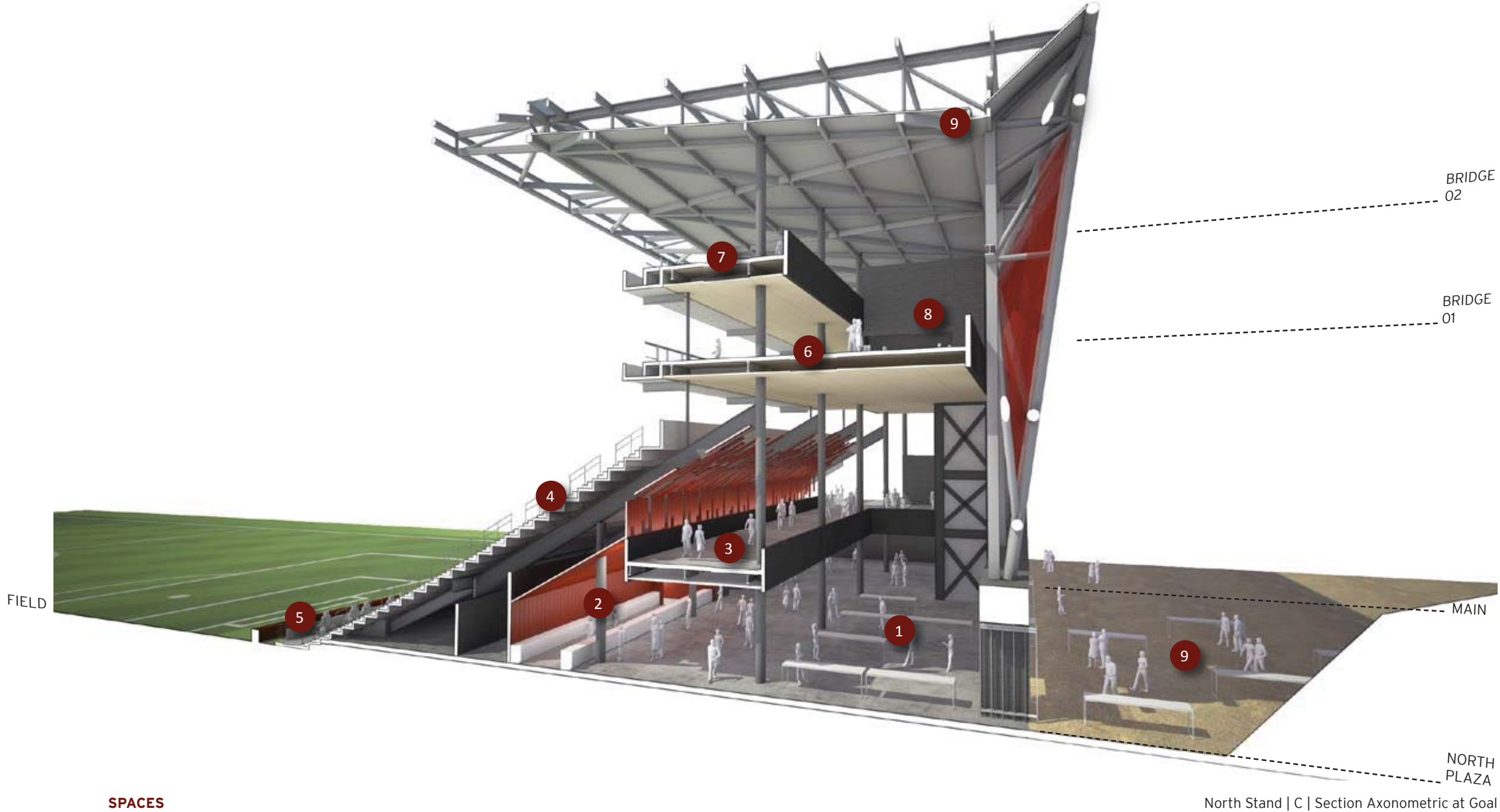
FIBERGLASS & PTFE COMPOSITE MESH PANEL SYSTEM
- 6

OPERABLE GLASS WALL SYSTEM
- 7

PRECAST STADIA WITH FIXED SATING
- 8

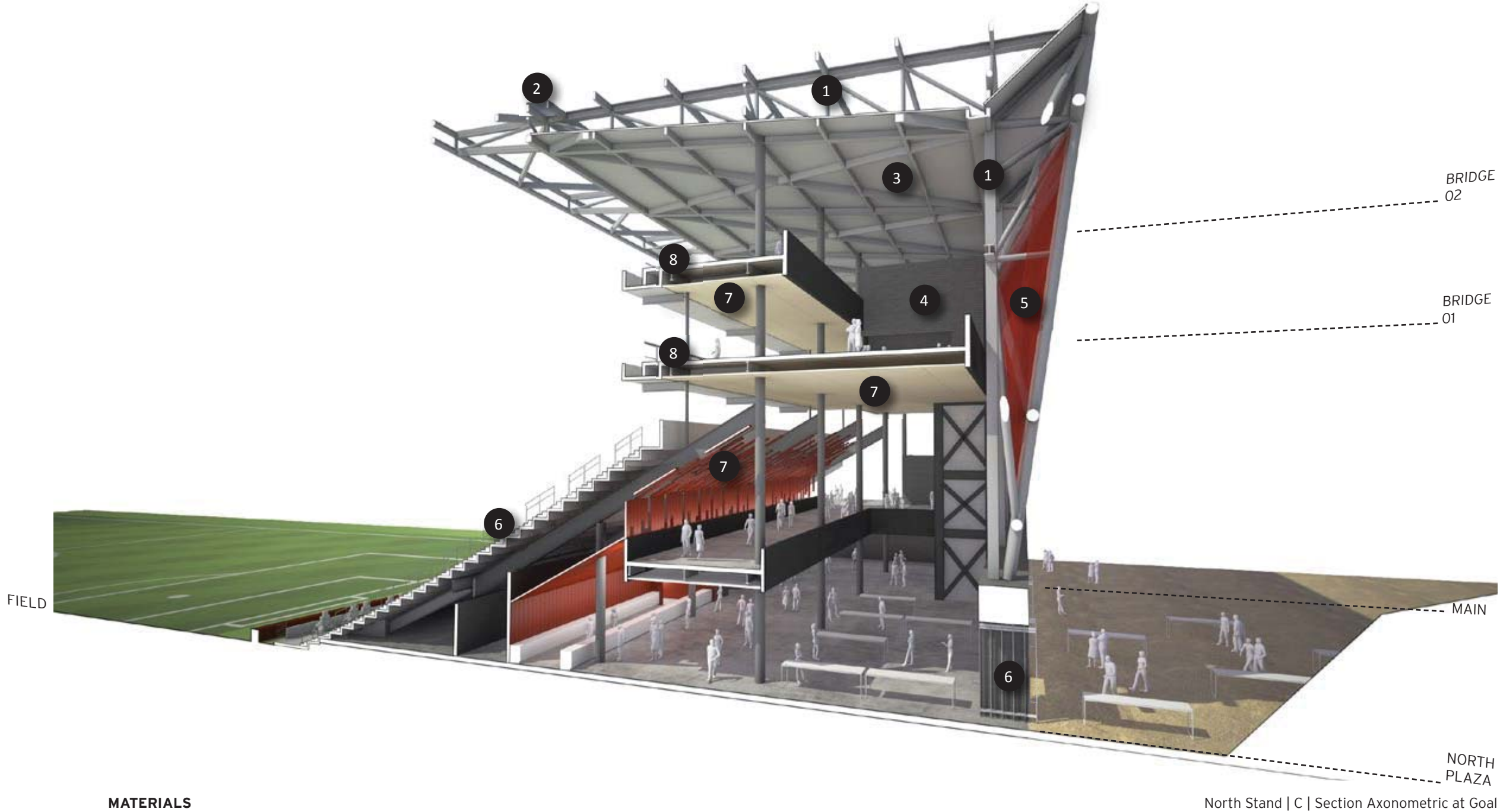
SPECIAL SHAPE BRICK VENEER - ROMAN PROFILE
- 9

VIDEO RIBBON BOARD



SPACES

- | | | | | | |
|---|----------------------------------|---|------------------------------------|---|-------------------------|
| 1 | SUPPORTER'S CONCOURSE | 5 | SUPPORTER'S SECTION ADA SEATING | 9 | NORTH SUPPORTER'S PLAZA |
| 2 | SUPPORTER'S CONCOURSE CENTER BAR | 6 | SUPPORTER'S BRIDGE LEVEL 01 | | |
| 3 | MAIN CONCOURSE LEVEL "BRIDGE" | 7 | SUPPORTER'S BRIDGE LEVEL 02 | | |
| 4 | SUPPORTER'S SECTION SEATING BOWL | 8 | SUPPORTER'S BRIDGE LEVEL RESTROOMS | | |



MATERIALS

- 1

EXPOSED STRUCTURAL STEEL WITH HIGH PERFORMANCE COATING
- 2

SINGLE LAYER ETFE MEMBRANE
- 3

METAL ROOF DECK WITH HIGH PERFORMANCE COATING
- 4

FORMED METAL WALL PANELS
- 5

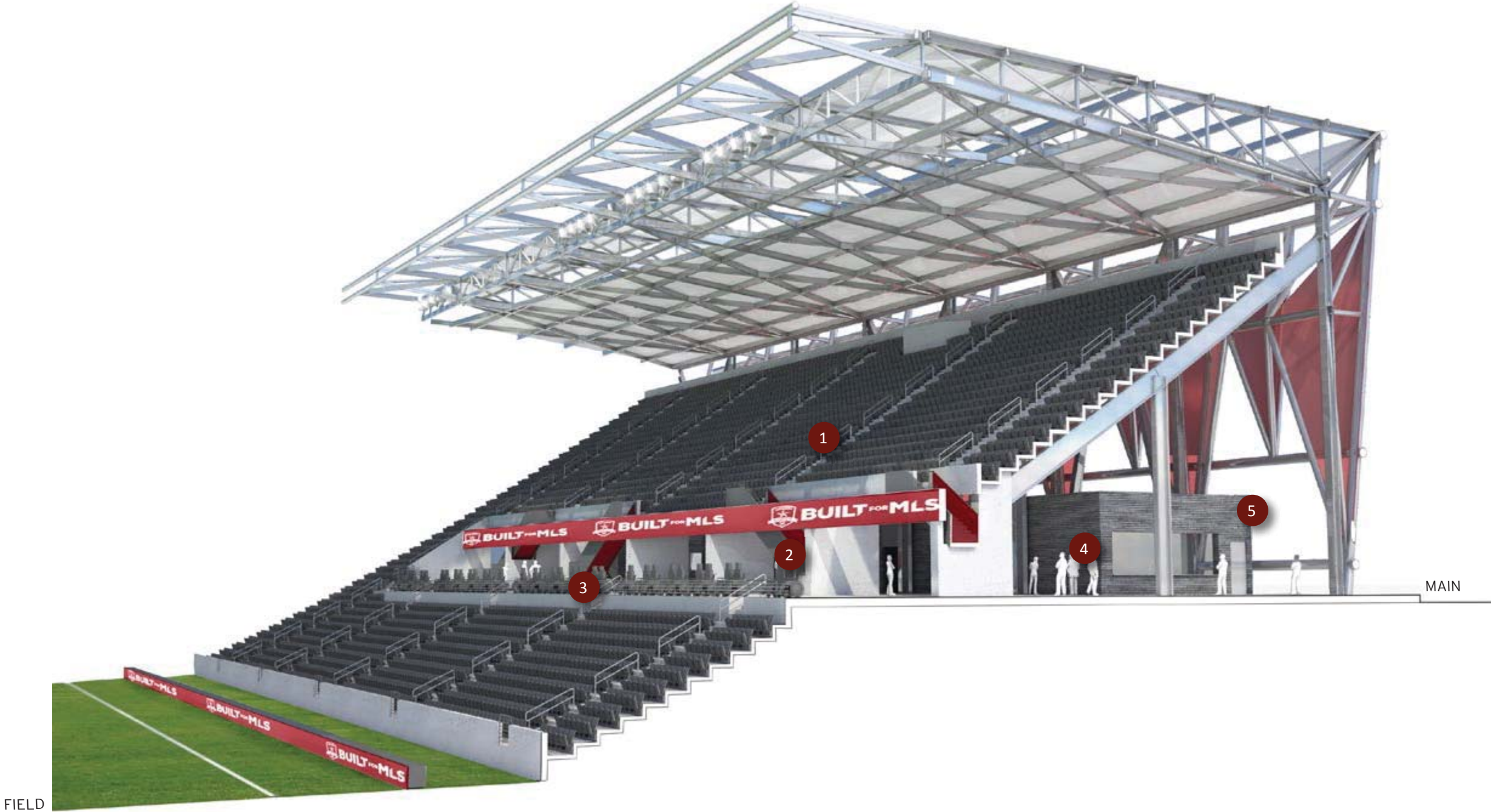
FIBERGLASS & PTFE COMPOSITE MESH PANEL SYSTEM
- 6

METAL SANDWICH PLATE STADIA SYSTEM
- 7

LINEAR METAL PANEL SOFFIT
- 8

ELEVATED SLAB ON METAL DECK WITH PRECAST TUB
- 9

ELEVATED SLAB ON METAL DECK WITH PRECAST TUB



SPACES

- 1

EAST STAND
- 2

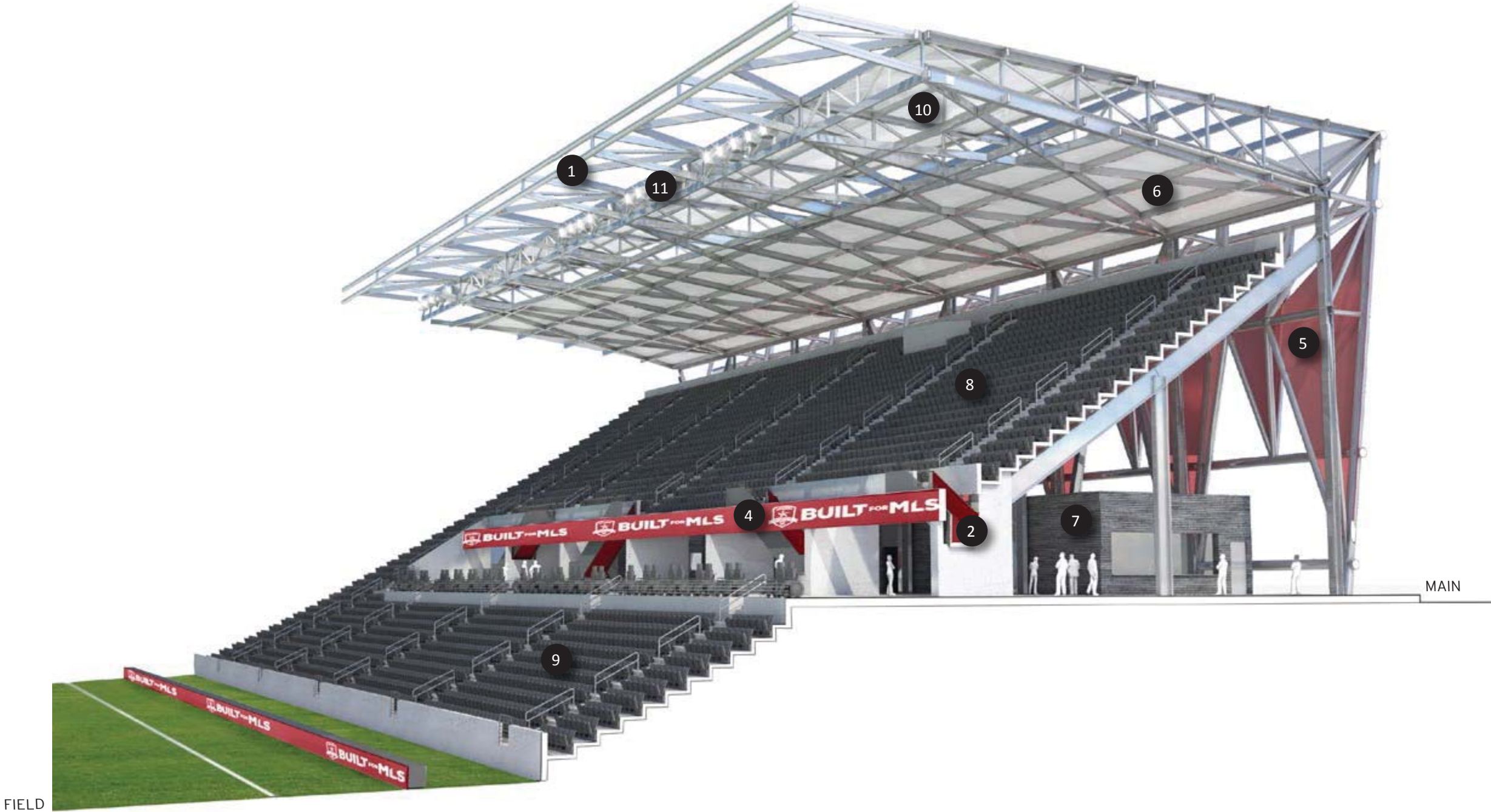
EAST STAND SUPER VOM
- 3

EAST STAND ADA
- 4

EAST CONCOURSE
- 5

EAST CONCOURSE CONCESSION / RESTROOMS

East Stand | D | Section Axonometric at Midfield



MATERIALS

East Stand | D | Section Axonometric at Midfield

- | | | | | | |
|---|--|---|---|----|----------------------------|
| 1 | EXPOSED STRUCTURAL STEEL WITH HIGH PERFORMANCE COATING | 5 | FIBERGLASS & PTFE COMPOSITE MESH PANEL SYSTEM | 9 | CIP STADIA |
| 2 | METAL PAN STAIR W/ STEEL PLATE GUARDRAIL & HSS SUPPORT FRAME | 6 | METAL ROOF DECK WITH HIGH PERFORMANCE COATING | 10 | SINGLE LAYER ETFE MEMBRANE |
| 3 | SCOREBOARD/VIDEO DISPLAY | 7 | CONCRETE MASONRY UNIT | 11 | SPORTS LIGHTING |
| 4 | VIDEO RIBBON BOARD | 8 | PRECAST STADIA | | |



SPACES

- | | | | |
|---|---|---|--|
| 1 | SOUTH STAND | 5 | SOUTH CONCOURSE CONCESSION / RESTROOMS |
| 2 | SOUTH STAND EXPANSION AREA | 6 | SERVICE CORRIDOR |
| 3 | SOUTH STAND STAGE END / RETRACTABLE SEATING | 7 | FIELD LEVEL SUPPORT SPACES |
| 4 | SOUTH CONCOURSE | 8 | SERVICE YARD |

North Stand | E | Section Axonometric at Goal



MATERIALS

North Stand | E | Section Axonometric at Goal

- | | | | | | |
|---|--|---|---|----|---|
| 1 | EXPOSED STRUCTURAL STEEL WITH HIGH PERFORMANCE COATING | 5 | CONCOURSE CONCESSION COUNTER | 9 | METAL ROOF DECK WITH HIGH PERFORMANCE COATING |
| 2 | SPECIAL SHAPE BRICK VENEER - ROMAN PROFILE | 6 | CONCRETE MASONRY UNIT | 10 | LINEAR METAL PANEL SOFFIT |
| 3 | SCOREBOARD/VIDEO DISPLAY | 7 | TPO ROOF SYSTEM | | |
| 4 | SINGLE LAYER ETFE MEMBRANE | 8 | FIBERGLASS & PTFE COMPOSITE MESH PANEL SYSTEM | | |