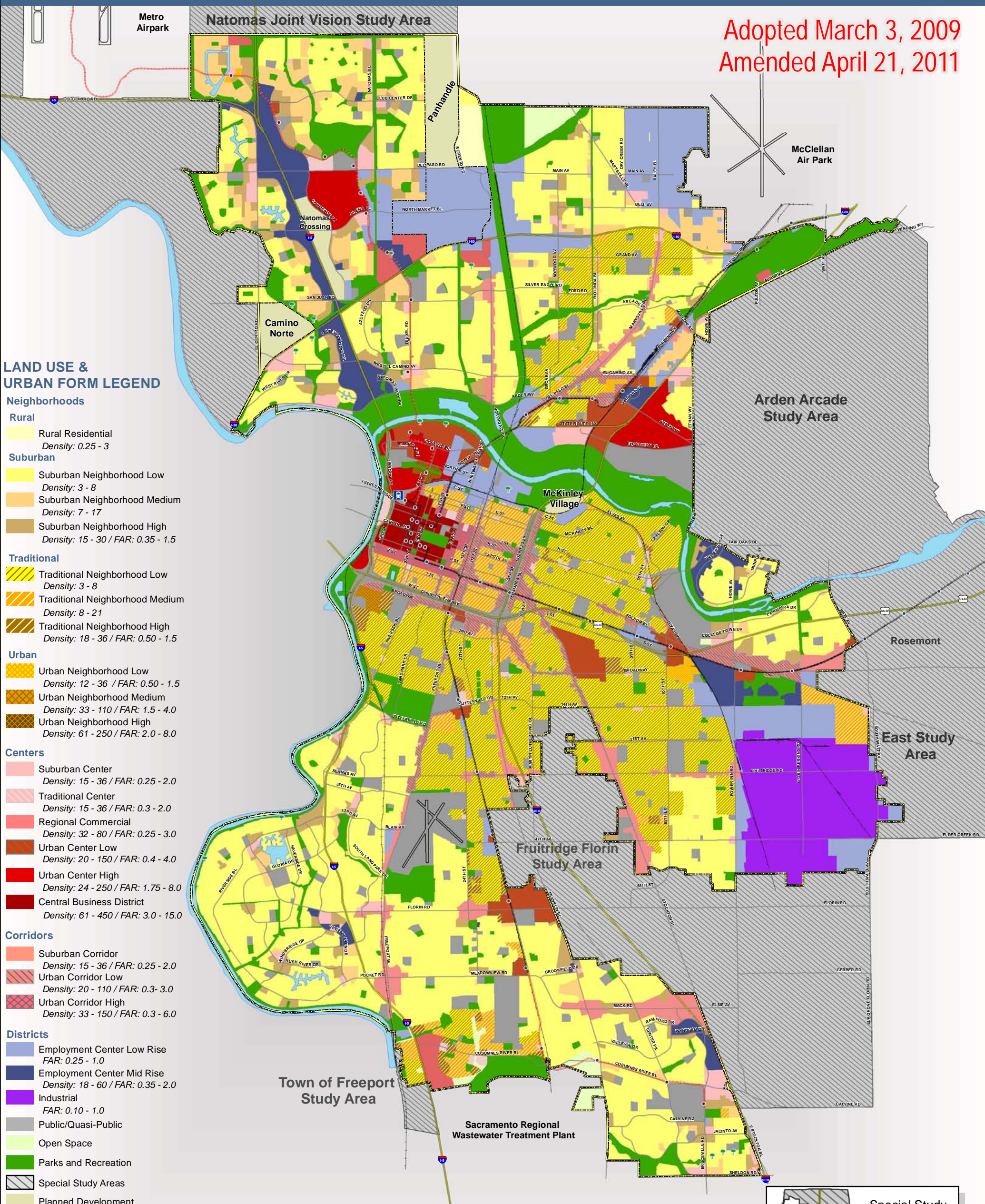


Adopted March 3, 2009
Amended April 21, 2011

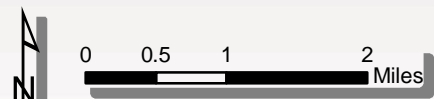


LAND USE & URBAN FORM LEGEND

- Neighborhoods**
- Rural**
- Rural Residential
Density: 0.25 - 3
- Suburban**
- Suburban Neighborhood Low
Density: 3 - 8
 - Suburban Neighborhood Medium
Density: 7 - 17
 - Suburban Neighborhood High
Density: 15 - 30 / FAR: 0.35 - 1.5
- Traditional**
- Traditional Neighborhood Low
Density: 3 - 8
 - Traditional Neighborhood Medium
Density: 8 - 21
 - Traditional Neighborhood High
Density: 18 - 36 / FAR: 0.50 - 1.5
- Urban**
- Urban Neighborhood Low
Density: 12 - 36 / FAR: 0.50 - 1.5
 - Urban Neighborhood Medium
Density: 33 - 110 / FAR: 1.5 - 4.0
 - Urban Neighborhood High
Density: 61 - 250 / FAR: 2.0 - 8.0
- Centers**
- Suburban Center
Density: 15 - 36 / FAR: 0.25 - 2.0
 - Traditional Center
Density: 15 - 36 / FAR: 0.3 - 2.0
 - Regional Commercial
Density: 32 - 80 / FAR: 0.25 - 3.0
 - Urban Center Low
Density: 20 - 150 / FAR: 0.4 - 4.0
 - Urban Center High
Density: 24 - 250 / FAR: 1.75 - 8.0
 - Central Business District
Density: 61 - 450 / FAR: 3.0 - 15.0
- Corridors**
- Suburban Corridor
Density: 15 - 36 / FAR: 0.25 - 2.0
 - Urban Corridor Low
Density: 20 - 110 / FAR: 0.3 - 3.0
 - Urban Corridor High
Density: 33 - 150 / FAR: 0.3 - 6.0
- Districts**
- Employment Center Low Rise
FAR: 0.25 - 1.0
 - Employment Center Mid Rise
Density: 18 - 60 / FAR: 0.35 - 2.0
 - Industrial
FAR: 0.10 - 1.0
 - Public/Quasi-Public
 - Open Space
 - Parks and Recreation
 - Special Study Areas
 - Planned Development

Additional Map Features

- Policy Area
- City Limits
- Waterways
- Proposed Parks/Parkways
- Major Road
- Expressway
- Existing LRT Line
- Proposed LRT Line
- Major Rail
- Existing LRT Stations
- Proposed LRT Stations
- Intermodal Station



Map Revised: December 1, 2011

