



Envision Broadway in Oak Park

Pop-up Workshop Series Summary | June 2018

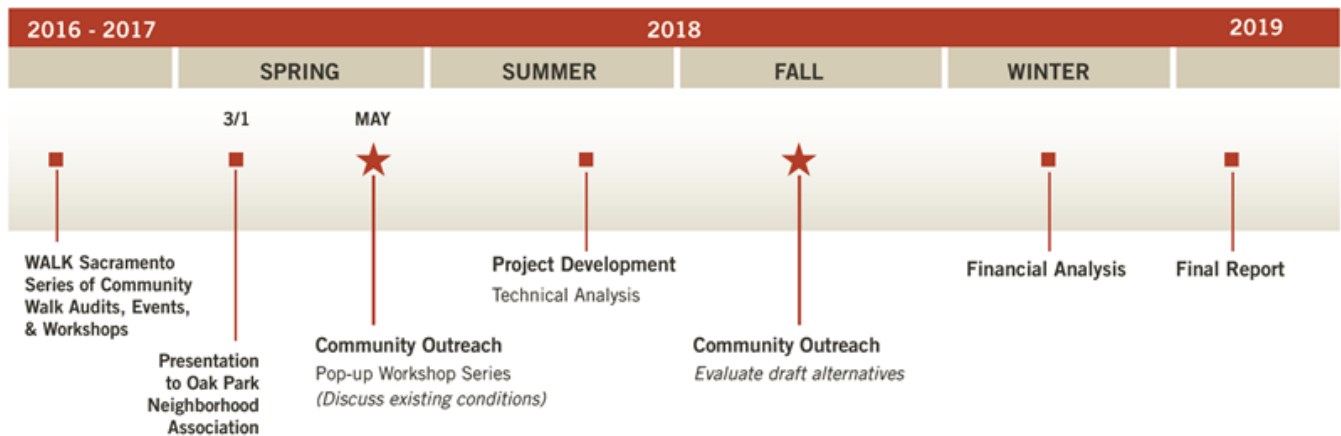
Project Overview

The Broadway corridor in Oak Park, between Franklin Boulevard and Martin Luther King Jr. Boulevard, is home to a vibrant and diverse mix of businesses. These include a concentration of employers that support retail and non-retail jobs. The area also includes a blend of housing styles. This stretch of the corridor is generally four lanes, and serves the region by carrying almost 15,000 vehicles per day.

The [Envision Broadway in Oak Park Complete Street Plan](#) will enhance accessibility and safety for all modes of transportation, and consider the needs of residents, businesses, and visitors, as well as



Schedule





Envision Broadway in Oak Park

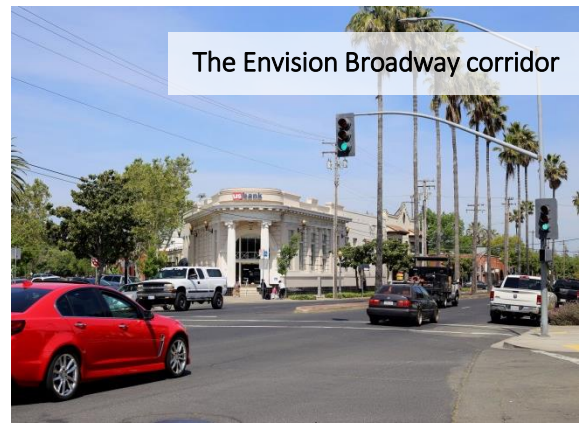
Pop-up Workshop Series Summary | June 2018

Community Involvement

[Get Involved! Sign up to receive project updates here.](#)

In May and June 2018, the City of Sacramento hosted a series of four pop-up workshops for the Envision Broadway in Oak Park Project. More than 86 community members attended the workshops, which took place at the following locations in the project area:

May 5	Oak Park Farmer's Market McClatchy Park
May 9	Oak Park Business Association Meeting
May 12	Oak Park Farmer's Market McClatchy Park
June 1	First Friday in Oak Park



Pop-up Workshop Purpose

The pop-up workshop series provided an opportunity for nearby residents and community members who visit and travel through the project area to learn about the Envision Broadway in Oak Park project and share their experiences traveling along the corridor.

Workshop Format

Each pop-up workshop included two informational and three interactive board displays. Project team members staffed each display to answer questions and encourage participation. Workshop participants were also provided with comment cards to share additional thoughts.



Children sharing their experiences traveling along the project corridor with project team members at the May 5th pop-up workshop.

All of the board displays are included in this document's appendix, and outlined on the following pages.



Envision Broadway in Oak Park

Pop-up Workshop Series Summary | June 2018

Informational Boards

About the Project

This board provided an overview of the Envision Broadway in Oak Park project, a map depicting the five concurrent projects currently being completed by the City of Sacramento along the Broadway Corridor and a project schedule.

Key Elements of a Corridor

There are many elements that can contribute to a person's experience traveling along a street. This board shared information about three key elements, and provided examples for each: safety, interesting, and efficiency. This board accompanied the "Traveling Experience" board, described below, to help inform workshop participants prior to them providing input.

Interactive Boards

Traveling Experience

This board asked participants to respond to the question, "What is your experience traveling along this section of the Broadway corridor?" in relation to three key elements. These key elements, explained in the "Key Elements of a Corridor" board, included safety, interesting, and efficiency. Each element was accompanied by a spectrum (more safe to less safe, engaging to boring, and easy to difficult) which participants placed a dot by where their experience measured on the spectrum.

The dots participants placed on each key element's spectrum indicated which mode of transportation they used to travel along the corridor. The dots were available as a car, bus, bike, and pedestrian.

★
ENVISION BROADWAY IN OAK PARK
★

There are many elements that can contribute to your experience traveling along a street. Learn about a few of these key elements below.

▼ Safety

- Wide sidewalks
- Enhanced crosswalks

- Buffers between people and cars

- Traffic calming measures
- Accommodations for people with disabilities

▼ Interesting

- Activated businesses and storefronts

- Public spaces
- Art

- Lighting
- Landscaping

▼ Efficiency

- Easy to navigate streets and roads for all modes

- Balanced local and regional traffic

- Direct multimodal access to transit

★
ENVISION BROADWAY IN OAK PARK
★

What is your experience traveling along this section of the Broadway corridor?

Safety

Place a dot underneath the experience you have.

MORE SAFE

LESS SAFE

Interesting

Place a dot underneath the experience you have.

ENGAGING

BORING

Efficiency

Place a dot underneath the experience you have.

EASY

DIFFICULT



Envision Broadway in Oak Park

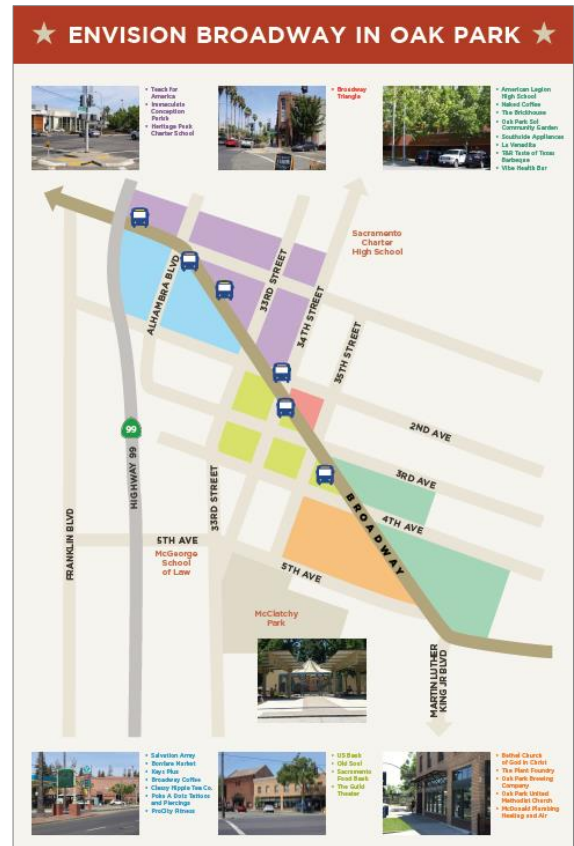
Pop-up Workshop Series Summary | June 2018

Illustrative Map

An illustrative map of the project area included photos of different “zones,” or clusters of community destinations and local businesses, and transit stops along the corridor. Participants placed dots, which depicted one of the four different modes of transportation, to show where and how they travel in the project area.

Aerial of the Project Area

An aerial photo of the project area was also available for participants to share their input on through post-it notes.



“Mode of Transportation” Sticker Dots



Car



Bicycle



Bus

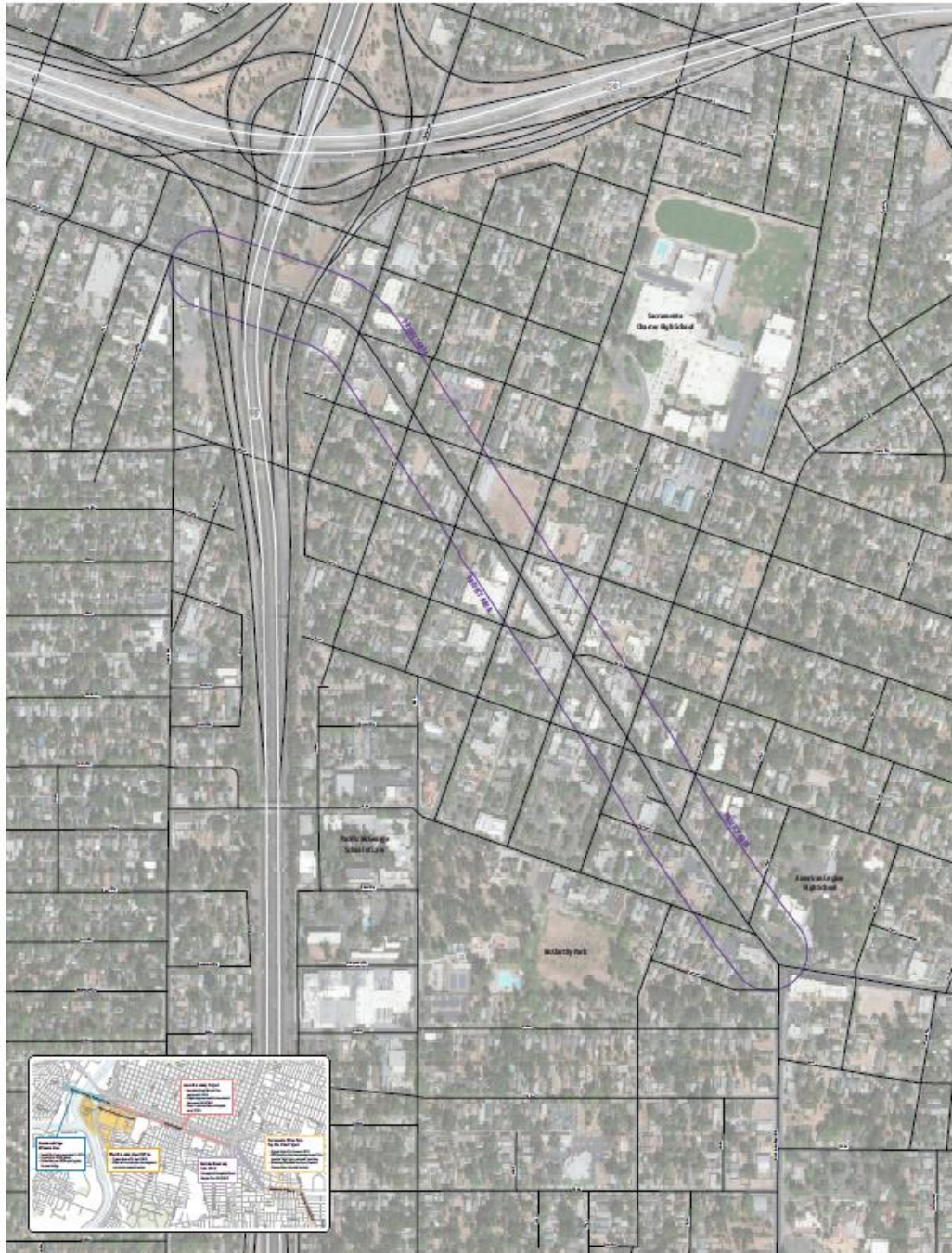


Pedestrian



Envision Broadway in Oak Park

Pop-up Workshop Series Summary | June 2018



PROJECT AREA





Envision Broadway in Oak Park

Pop-up Workshop Series Summary | June 2018

Feedback

Below is a summary of all community feedback received at the pop-up workshops.

Comment from comment cards and boards

- Many drivers run red lights at 34th and Broadway – perhaps the City could install violation cameras? Or left turn light signals?
- The intersection at 2nd Avenue and 34th Street is dangerous; mark the intersection with white stripes on all four sides and add "clear" and "keep clear" as bold words.
- It is safest to jaywalk mid-block between 34th and 35th Streets, I'm sure you know of this problem. Please solve this problem or reduce the danger of it.
- I have concerns with safety at the diagonal intersections for both pedestrians and drivers.
- What is the status of a bridge over the river at Broadway? How will this study and street improvement deal with the interested traffic?
- There are accidents almost daily at the corner of 2nd Avenue and 34th Street at Kombi Haus. It is a hard intersection to see people turning onto 34th Street from Broadway. Perhaps if people had to stop before turning onto 34th Street, that would prevent some accidents. Thank you.
- Address the 35th Street and Broadway intersection.
- Address the 34th Street intersection and 2nd Avenue intersection; both are very dangerous.
- Please address bike-ability along the corridor.
- I avoid walking through the 2nd Ave. Tunnel (under Hwy 99)
- The 2nd Ave tunnel is scary, but it is the best way to travel between Oak Park and Curtis Park
- Decorative Archways the narrows the line of site
- More (shade) trees are needed along the corridor, especially on the south/east end
- Bus pullouts are needed
- Sidewalks are not consistently wide enough for wheelchairs
- US Bank Parking on street
- Intersection at 2nd Ave, 34th St. and Broadway is confusing for all users
- Need a cross walk across Broadway at 2nd Ave.
- Wheelchairs need more space at crossings
- Lack of stop signs in east/west direction in neighborhood
- Need a bike lane
- Would like to see activations created by Oak Park artists
- "I like on 3rd Ave and I walk to Old Soul all the time" Christian (age 9)



Envision Broadway in Oak Park

Pop-up Workshop Series Summary | June 2018

- Consider speed tables or raised intersections
- The signal at 35th and Broadway does not give pedestrians enough time to cross from the NE corner to the SE corner
- Need longer crossing phases (at signals) for seniors and mobility impaired
- Vehicles on 2nd Ave travel too fast for residents, above the speed limit (30 mph) which itself is too high
- Need more trash cans along Broadway
- Need more trash cans, recycling cans and compost cans
- Like the free on-street parking near the Guild Theater
- Experience increased motorist speeds on the South/East part of the corridor
- Comfortable as a cyclist riding in the street (as a vehicular cyclist) but finds the pavement quality poor
- Need more lighting
- Need many more pedestrian crossings
- Need clarity with beacon signals
- At Broadway and 36th it is difficult for motorists to turn from northbound on 36th left onto Broadway (heading towards Sac High) (sight lines)
- Vehicles traveling too fast on 5th Ave - traffic calming or speed bumps needed
- Inconsistent bike lanes make bike travel harder
- bulb outs without a bike lane mean that bikes get pushed into the curb
- Curtis Park resident prefers to travel East/West on 5th Ave to Broadway
- Transit stop at Franklin and Broadway isn't easily accessible for wheelchairs - the bus must pull away from the curb to allow wheelchair to board
- Motorists traveling south on Alhambra, turning left onto Broadway cannot see pedestrians crossing Y St. or Broadway
- Resident would like to see slower speeds, recommends roundabouts with landscaping to improve aesthetic
- Regularly travel by bike on Broadway between 26th St. and Alhambra and has trouble interacting with parked cars on street. Would like to see a bike land
- Motorists travel too fast from Broadway onto Y St.
- Heavy pedestrian traffic on Y street between transit stop on Alhambra and Sac High
- Crossing at the HAWK still feels uncomfortable because of the number of lanes to cross, motorists run the light regularly



Envision Broadway in Oak Park

Pop-up Workshop Series Summary | June 2018

- Live in Oak Park, avoid riding on Broadway but would use bike lanes
- Would like to see a travel lane converted to a bike lane
- Please add some bike lanes
- Need more pedestrian crossings (mid block)
- high motorist speeds on Broadway and MLK, surprised to see little enforcement
- Observed crash, motorist traveling north on MLK turning left onto Broadway - too fast
- Left turn from 4th Ave to Broadway is scary. Traffic on Broadway is fast.
- Motorists don't yield to pedestrians crossing Broadway at 35th Avenue
- Pedestrians crossing Broadway at 2nd Avenue is difficult
- Increase visibility of Farmers Market at McClatchy Park
- Difficult to make left turns onto and from Broadway
- Need more bike lanes on 2nd Avenue
- Alhambra & Broadway, left turns cause chaos and people run the light on Broadway
- Need better connectivity to Midtown for Bikes
- Conflicts between bikes and busses near 99 ramps on Broadway (north/west bound)
- Speeds are too high, consider roundabouts
- 2nd Ave and 32nd Street, people speed and too many accidents at intersection
- Need a central gathering place near 34th and Broadway
- Consider scrambles for pedestrian crossings and removal of automobile conflicts
- More parking for businesses, or bring streetcar through to increase traffic for small shops

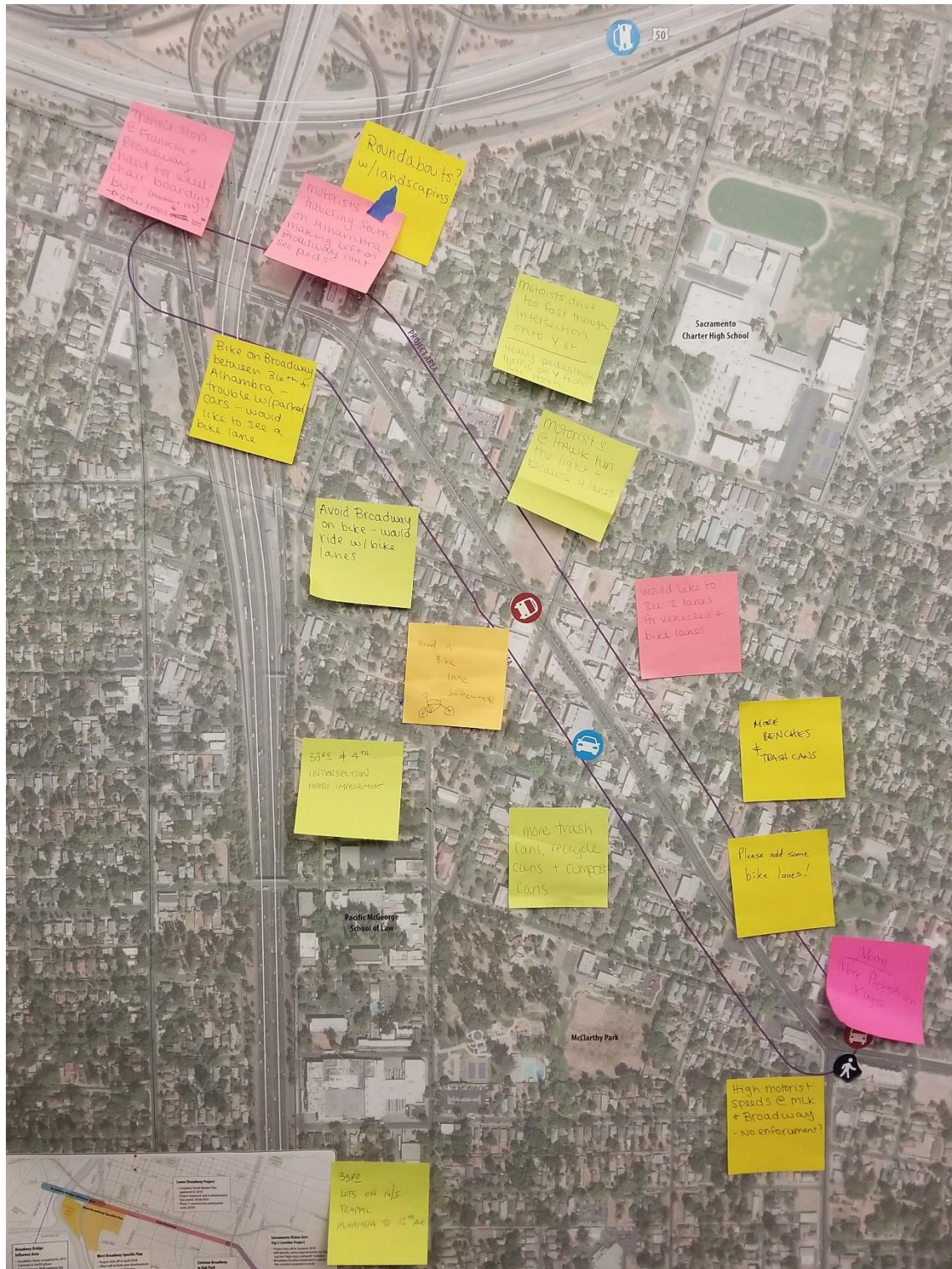
Appendix

- Board Displays



Envision Broadway in Oak Park

Pop-up Workshop Series Summary | June 2018





Envision Broadway in Oak Park

Pop-up Workshop Series Summary | June 2018

★ ENVISION BROADWAY IN OAK PARK ★

What is your experience traveling along this section of the Broadway corridor?

Safety
Place a dot underneath the experience you have.

MORE SAFE LESS SAFE

Interesting
Place a dot underneath the experience you have.

ENGAGING BORING

Efficiency
Place a dot underneath the experience you have.

EASY DIFFICULT

The form displays survey results for three categories: Safety, Interesting, and Efficiency. Each category has a horizontal scale from 'MORE SAFE' to 'LESS SAFE', 'ENGAGING' to 'BORING', and 'EASY' to 'DIFFICULT'. Icons representing different modes of transport (pedestrians, cars, bicycles, and a bus) are placed along these scales to indicate the frequency of experiences. For Safety, most icons are clustered on the 'LESS SAFE' side. For Interesting, icons are more spread out but lean towards the 'ENGAGING' side. For Efficiency, icons are heavily clustered on the 'EASY' side.



Envision Broadway in Oak Park

Pop-up Workshop Series Summary | June 2018

