

Park Amenity Guide

Many parks in Sacramento offer a lot of fun things to do with your family. Parks have a large array of activities like water play, Bocce Ball, fitness, volleyball, dog parks, skate parks and more. Search online to find the park nearest you with a complete list of amenities they offer at our website: cityofsacramento.org/parksandrecreation/parks/sites/maps.

Turnkey Agreements

The City has entered into several turnkey agreements with developers to build our parks. These arrangements have been successful and the City will continue to encourage these agreements in the future.

How We Can Help You

Parks that are awaiting development may remain idle for a period of time creating weeds and other vegetation growth. The City of Sacramento has a weed abatement program and routinely mows these undeveloped sites in the spring. Residents may contact the City Weed Abatement Program for information on weed abatement in your neighborhood.

808-5417 No structure on property
808-5948 Structure on property

If you have questions regarding park design, development or renovation, please contact the Park Planning and Design Services Division of the Department of Parks and Recreation at (916) 808-5200. Also visit our web site at:

www.cityofsacramento.org/parksandrecreation

for further information on park specific master plans and park locations.



City of Sacramento
Department of Parks and Recreation
915 I Street, Fifth Floor
Sacramento, CA 95814
(916) 808-5200



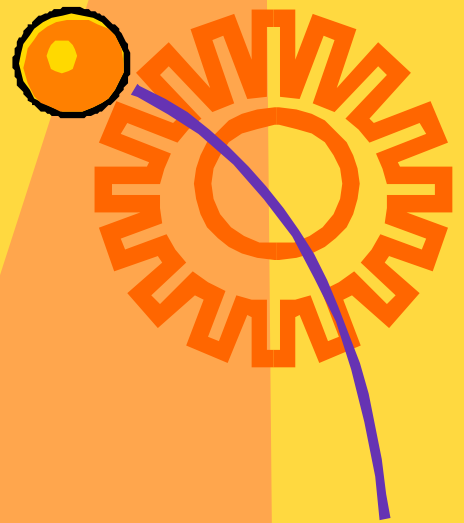
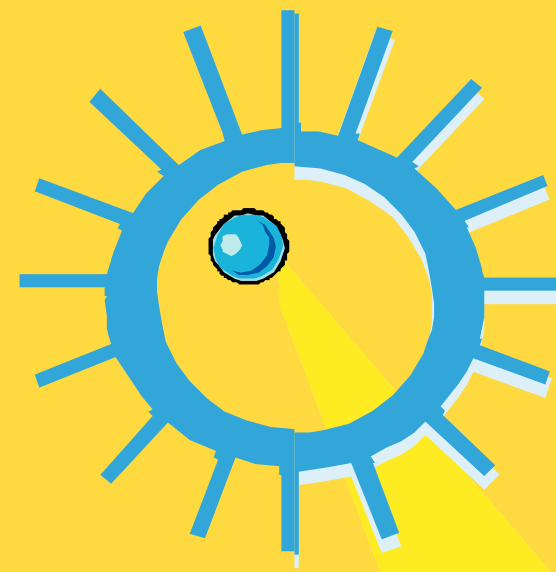
CITY OF SACRAMENTO
Kevin Johnson, Mayor

CITY COUNCIL
Ray Tretheway, District 1
Sandy Sheedy, District 2
Steve Cohn, District 3
Robert King Fong, District 4
Lauren Hammond, District 5
Kevin McCarty, District 6
Robbie Waters, District 7
Bonnie Pannell, District 8

Gus Vina, Interim City Manager

DEPARTMENT OF PARKS AND RECREATION COMMISSION
George Azar - District 1
Jonathan Rewers, Interim Chair - District 2
Jeff Harris - District 3
Cindy Cooke - District 4
Malachi Smith - District 5
Dave Tamayo - District 6
Darrel Woo - District 7
Virginia Guadiana - District 8
Jay Hansen - At Large
David Heitstuman - At Large
Brandon Beaver - Mayoral

James L. Combs, Director
Department of Parks and Recreation



City of Sacramento Department of Parks and Recreation Park Design and Development



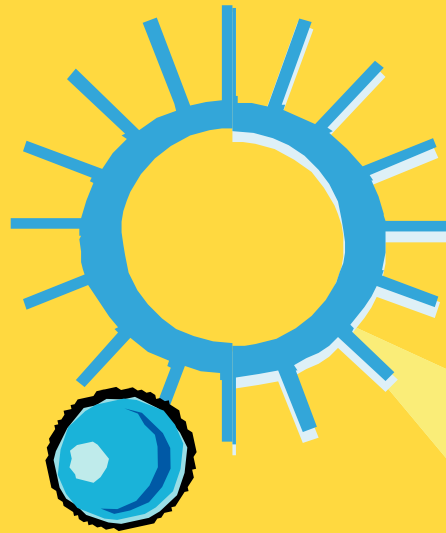
Hummingbird Park

CITY OF SACRAMENTO



DEPARTMENT OF PARKS AND RECREATION

Park Planning and Development Services



INTRODUCTION

Parks add to the beauty of our city and represent a place where residents and visitors can go to relax, reflect and recreate. In the City of Sacramento there are 213 parks and parkways totaling nearly 3,200 acres of land.

The Department of Parks and Recreation is committed to the design and development of new or renovated parks in a timely and efficient manner. The following information provides an overview of our park categories and the park development process that we go through to build these parks.



PARK CATEGORY DESCRIPTIONS

There are four types of defined parks in Sacramento. Each category defines the park purpose and amenities that we strive to provide for the community.

NEIGHBORHOOD PARKS range in size from 2 to 10 acres, and serve a ½ mile radius. Some neighborhood parks are located adjacent to elementary schools and park amenities are usually oriented toward the recreation needs of children.

COMMUNITY PARKS range in size from 6 to 60 acres, and serve a 3 mile radius or several neighborhoods. Community parks contain amenities found in neighborhood parks, but may also contain lighted sports fields or courts, skate parks, dog parks, nature areas, and off-street parking and restrooms. Specialized amenities may also be found in community parks including community centers, water play areas or swimming pools.

REGIONAL PARKS generally range from 75 to 200 acres and serve the entire City and beyond. Amenities in regional parks may include all the amenities found in community parks and include corporate picnic area, golf course, regional sport complex and other region-wide attractions.

OPEN SPACES AND PARKWAYS

Open spaces are natural areas that are set aside primarily to preserve the City's natural landscape, including native plants or wildlife habitat. Use of these areas may be limited to passive recreation.

Parkways are linear parkland situated along waterways or other public corridors, and are used primarily for pedestrians and bicyclists, linking residential homes to schools, parks and trail systems.



California Lilac Park



Tanzanite Park



American River Parkway

PARK DEVELOPMENT PROCESS

Critical to the park development process is securing sufficient funding for projects. The primary funding source for new park development comes from Park Development Impact Fees that are assessed on private development at the time building permits are issued. Other funding sources include Quimby Fees (in lieu of preferred land dedication) and grants from state, federal or private foundations.

Capital Improvement Project (CIP)

- ♦ Priority projects identified in the "Parks and Recreation Programming Guide," or 50% of the homes are built in a new development and funding is available
- ♦ Project scope, schedule and budget approved by City Council
- ♦ Project scheduled into PPDS work plan

Community Input / Master Plan & Environmental Documents

- ♦ Master Plan designed through community process
- ♦ Community meetings to develop and review plan: 1-3 meetings
- ♦ Master Plan finalized and approved by City Council: 5-7 months

Construction Documents

- ♦ Building Department Plan Review/Building Permit: 2-3 months
- ♦ Prepare Construction Documents: 6-8 months

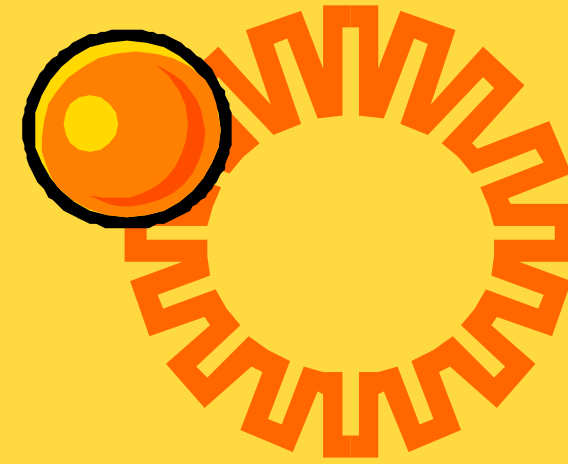
Competitive Bidding & Awarding of Construction Contract: 2-3 months

Construction of Project

9 months including 3 month plant establishment period
(Allowance for variables such as construction delays due to seasonal weather)

In General

The time frame for the complete park development process is approximately 24-30 months.



Muir Park



West Hampton Park



Southside Park

