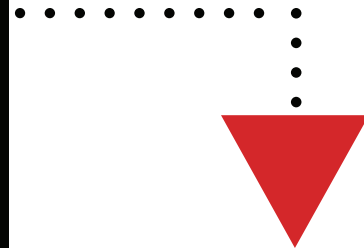


Are there limits on the amount a candidate may accept from a donor?



Yes, there are limits on the dollar amount a candidate or candidate's controlled committee may accept from a single donor (or contributor) per a primary, general or special election period. The election period limits are:

\$1,500 per person to a Council Member or Candidate
\$3,050 per person to a Mayor or Candidate

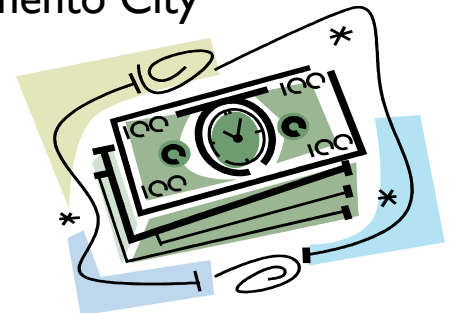
Can more ever be accepted? Yes, but only if the source is a "Large Political Committee" (LPC) that is registered with the Sacramento City Clerk's Office. The limits are:

\$5,050 per LPC to a Council Member or Candidate
\$10,100 per LPC to a Mayor or Candidate

A list of registered LPC's is available from the Sacramento City Clerk's Office, or on the Clerk's web site at:

<http://www.cityofsacramento.org/clerk/olcf/LgPoliticalComm.htm>

Contributions received prior to committee qualification would be considered for purposes of the City's contribution limits. The limits also apply to candidates who raise less than \$1000 per calendar year.



For more detailed information on the provisions of contribution limits

refer to the Sacramento City Code on line at:

http://www.qcode.us/codes/sacramento/view.php?topic=2-2_13-i&frames=on