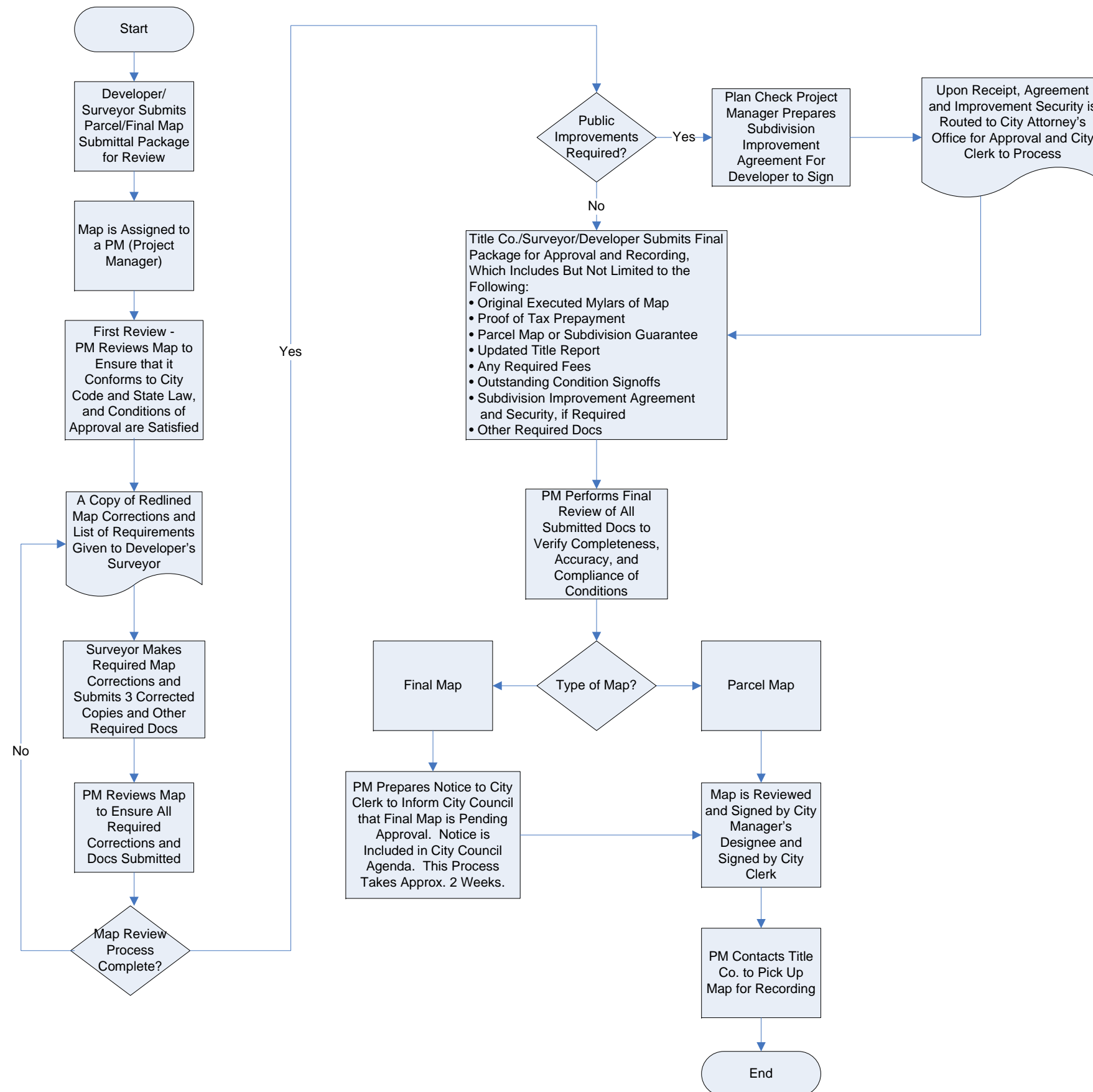


Development Engineering Division Final and Parcel Map Approval Process



MAP REVIEW TIMELINES

First Review: 4 Weeks

Subsequent Reviews: 2 Weeks (Each Review)

- Above Timelines Include City Review Time Only and Does Not Include Surveyor/Developer Processing Time
- Above Timelines May Vary Depending on Workload
- Number of Review Cycle Required to Approve a Map Will Vary Depending on Complexity of Project and Surveyor/Developer Response

NOTE: PROJECTS REFERENCED AS PARCEL MAPS ALSO APPLY TO MASTER PARCEL MAPS

