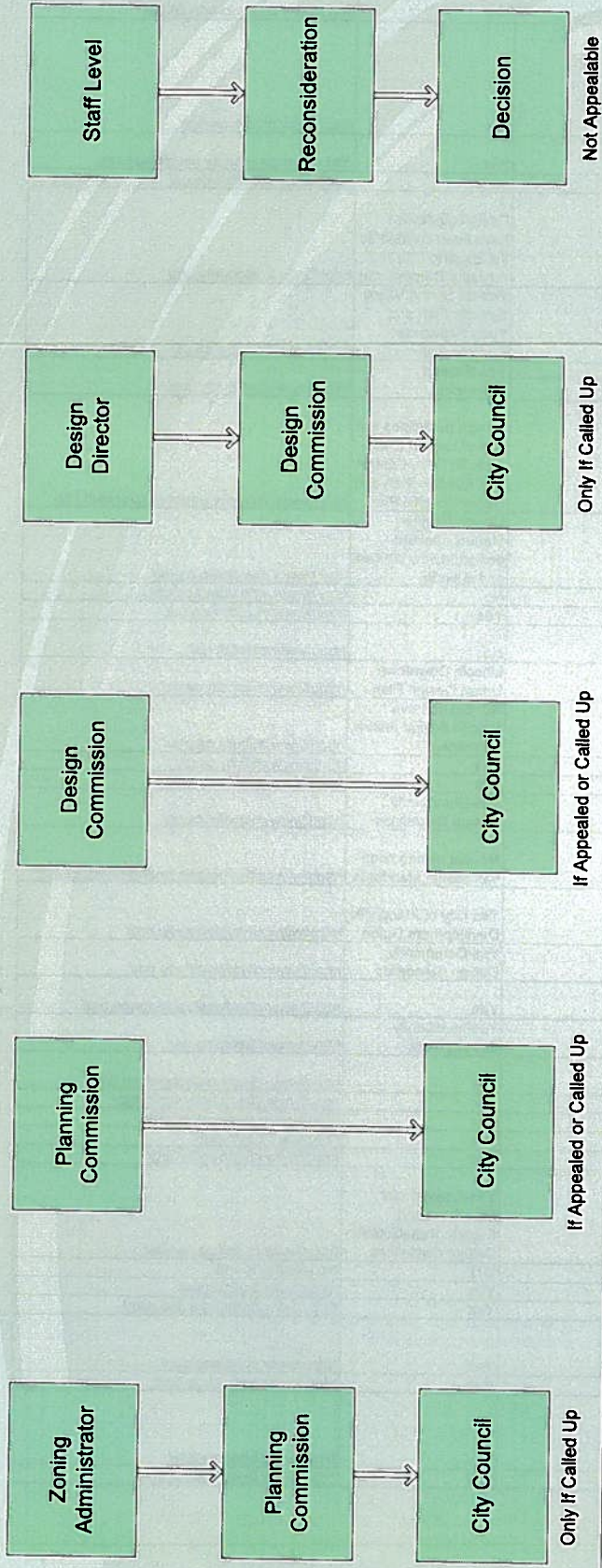
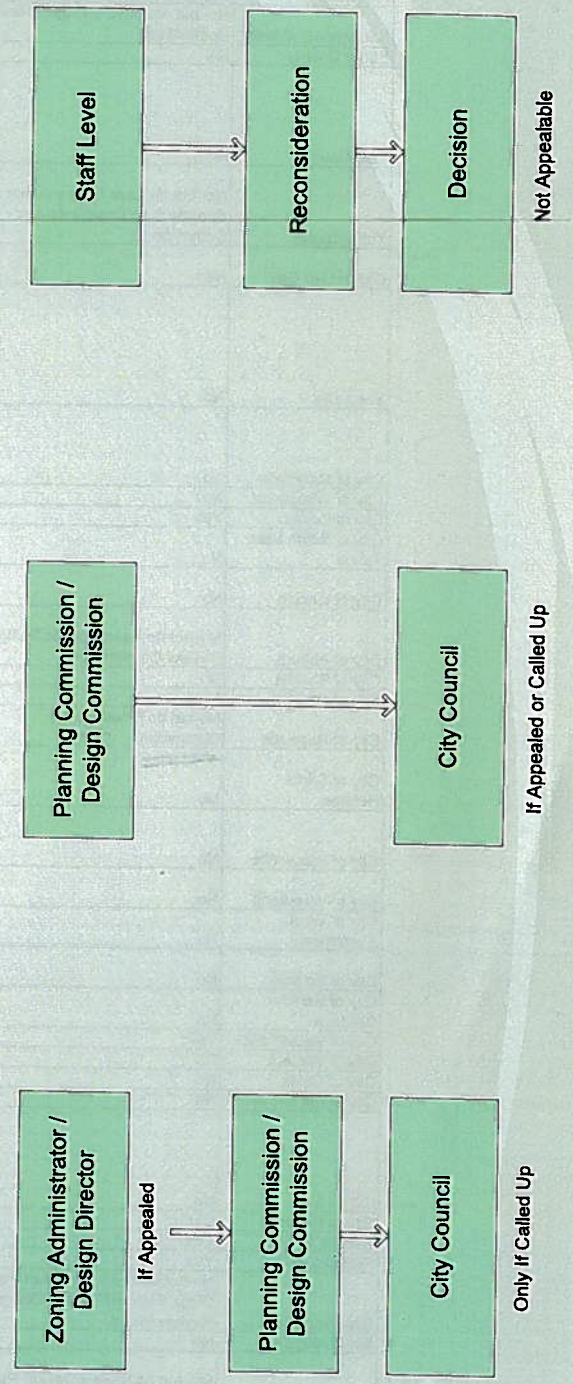


Current Process



Proposed Process



Design and Planning Commissions Comparisons

| City/County | Design Review Commission | Planning Commission | Design Guidelines | Website |
|--------------------------|--|---------------------|---|---|
| El Dorado County | No- but do have a Design Review Committee | Yes | Yes | http://www.co.el-dorado.ca.us/ |
| Placer County | No-but do have separate Design Review Committees for Kings Beach, North Tahoe, Tahoe City, Meadow Vista, Squaw Valley, and Foresthill Forum Advisory Council | Yes | Yes | http://www.placer.ca.gov/ |
| Sacramento County | No- but do have a Project Review Committee | Yes | Yes | http://www.saccounty.net/default.htm |
| Sutter County | No | Yes | No | http://www.co.sutter.ca.us/ |
| Yolo County | No | Yes | Design guidelines have been created by the Esparto Citizens Advisory Commission | http://www.yolocounty.org/ |
| Yuba County | No- but do have Plumas Lake Specific Plan Design Review Committee | Yes | Yes-for Spring Valley Specific Plan and Yuba Highlands Specific Plan | http://www.co.yuba.ca.us/ |
| City of Live Oak | No | Yes | Yes (Design Standards) | http://www.liveoakcity.org/ |
| Yuba City | No | Yes | Design guidelines are part of Lincoln East Specific Plan, Central City Specific Plan and Harter Specific Plan | http://www.yubacity.net/boards/default.htm |
| City of Marysville | No | Yes | Design Review Manual contains design review policies and criteria | http://www.marysville.ca.us/ |
| City of Wheatland | No | Yes | No | http://www.wheatland.ca.gov/ |
| City of Colfax | Yes | Yes | Yes | http://www.ci.colfax.ca.us/ |
| City of South Lake Tahoe | No | Yes | No | http://www.cityofslt.us/ |
| City of Lincoln | No | Yes | Lincoln Downtown Urban Design Plan | http://www.ci.lincoln.ca.us/ |
| City of Auburn | No-But do have Historic Design Review Commission | Yes | No- but do have historic design review guidelines | http://www.auburn.ca.gov/ |
| City of Rocklin | No | Yes | Yes | http://www.rocklin.ca.us/ |
| City of Loomis | No | Yes | Yes | http://www.loomis.ca.gov/ |
| City of Roseville | No-but do have Design Committee | Yes | Yes-Community Design Guidelines | http://www.roseville.ca.us/ |
| City of Citrus Heights | No | Yes | No- but zoning code has design standards | http://www.citrusheights.net/home/index.asp |
| City of Placerville | No | Yes | Yes-City of Placerville Development Guide | http://www.cityofplacerville.org/ |
| City of Woodland | No | Yes | Yes-Community Design Standards | http://www.cityofwoodland.org/ |
| City of West Sacramento | No | Yes | Yes | http://www.cityofwestsacramento.org/ |
| City of Folsom | No | Yes | Yes-multifamily development | http://www.folsom.ca.us/ |
| City of Rancho Cordova | No | Yes | Yes | http://www.cityofranhocordova.org/ |
| City of Sacramento | Yes | Yes | Yes | http://www.cityofsacramento.org/ |
| City of Winters | No | Yes | Yes | http://www.cityofwinters.org/ |
| City of Davis | No | Yes | Yes | http://cityofdavis.org/ |
| City of Elk Grove | No | Yes | Yes | http://www.elkgrovecity.org/ |
| City of Galt | No | Yes | Yes-Commercial Storefront and Façade Rehabilitation Design Guidelines | http://www.ci.galt.ca.us/site/ |
| City of Isleton | UTL | Yes | UTL | No website found |
| Seattle, WA | Yes | Yes | Yes | http://www.seattle.gov/ |
| Portland, OR | Yes | Yes | Yes | http://www.portlandonline.com/ |
| San Diego, CA | No-but do have Old Town San Diego Planned District Design Review Board | Yes | Yes | http://www.sandiego.gov/ |
| San Jose, CA | No | Yes | Yes | http://www.sanjoseca.gov/ |
| Phoenix, AZ | No- but do have a Design Review Standards Committee and a Design Review Appeals Board | Yes | Yes | http://www.phoenix.gov/ |
| Denver, CO | No | Yes | Yes | http://www.denvergov.org/ |

Design Review

| Project Number | Project Name | 2007 Design Director | 2008 Design Director | 2007 Design Commission | 2008 Design Commission | Total # of Hearings | Invoiced |
|-----------------------|--------------------------------|----------------------|----------------------|------------------------|------------------------|---------------------|--------------------|
| P05-097 | Sacramento Railyards | | | 5 | | 5 | |
| DR07-119 | Westfield Downtown Plaza | | | 2 | 2 | 4 | \$1,363.44 |
| DR05-340 | Cathedral Square | | | 3 | | 3 | \$1,480.96 |
| DR05-402 | Metropolitan | | | 2 | 1 | 3 | \$2,763.44 |
| DR06-313 | Urban Living -3030 T | | 1 | 1 | 1 | 3 | \$1,480.96 |
| DR07-305 | Broadway Lofts | | 1 | 2 | | 3 | \$4,063.44 |
| DR08-132 | Oak Park Fresh & Easy | | 2 | | 1 | 3 | \$2,028.96 |
| M07-029 | Township 9 | | | 3 | | 3 | |
| DR04-187 | Canterbury Crossing | 1 | | 1 | | 2 | \$2,674.44 |
| DR04-253 | Little Siagon | 1 | | 1 | | 2 | \$3,567.60 |
| DR07-009 | 831 L Street | | | 1 | 1 | 2 | \$1,480.96 |
| DR07-077 | Warfield Building | 2 | | | | 2 | \$940.16 |
| DR07-110 | The Studios | | | 2 | | 2 | \$1,363.44 |
| DR07-188 | The Green Building | | | 2 | | 2 | \$1,363.44 |
| DR07-263 | 1601 Broadway | | 2 | | | 2 | \$1,730.96 |
| DR07-283 | The Creamery | | 1 | | 1 | 2 | \$1,480.96 |
| DR08-225 | Tribute Building | | | | 2 | 2 | \$5,551.20 |
| ER08-070 | Lochbrae Residence | | 2 | | | 2 | \$302.40 |
| ER08-073 | 38th Street Residence | | 1 | | 1 | 2 | \$298.00 |
| M05-084 | CC Urban Design Guidelines | | | 1 | 1 | 2 | |
| DR04-317 | 308 14th Street | 1 | | | | 1 | \$2,016.12 |
| DR05-300 | Epic | | | 1 | | 1 | \$1,363.44 |
| DR06-162 | 1523 E Street Lofts | 1 | | | | 1 | \$1,730.96 |
| DR06-173 | 301 University | 1 | | | | 1 | \$1,480.96 |
| DR06-260 | Shiloh Baptist Church | 1 | | | | 1 | \$1,363.44 |
| DR06-261 | Starbuck/76 Station | 1 | | | | 1 | \$1,363.44 |
| DR06-271 | 3100 Folsom | 1 | | | | 1 | \$1,480.96 |
| DR06-294 | Rite Aid | 1 | | | | 1 | \$1,480.96 |
| DR07-017 | 3009 K Street Bldg | 1 | | | | 1 | \$1,480.96 |
| DR07-065 | Alhambra & O Commercial Bldg | 1 | | | | 1 | \$940.16 |
| DR07-067 | 27th and V | 1 | | | | 1 | \$1,730.96 |
| DR07-109 | 300R Mixed Use | | | 1 | | 1 | \$1,730.96 |
| DR07-114 | Dream | 1 | | | | 1 | \$1,480.96 |
| DR07-118 | Susie Burger | 1 | | | | 1 | \$381.92 |
| DR07-191 | RetroLodge | 1 | | | | 1 | \$1,730.96 |
| DR07-230 | Kupros Bistro | | 1 | | | 1 | \$481.52 |
| DR07-272 | 2020 L Street | 1 | | | | 1 | \$1,363.44 |
| DR07-277 | Oak Park Community Center | 1 | | | | 1 | \$1,514.64 |
| DR07-297 | East End Gateway 2 & 3 | | | 1 | | 1 | \$0.00 |
| DR07-350 | Meridian II | | | | 1 | 1 | \$1,363.44 |
| DR07-357 | George Sims Community Center | | 1 | | | 1 | \$1,730.96 |
| DR07-377 | REI addition | 1 | | | | 1 | \$1,480.96 |
| DR07-389 | East End Gateway 1 | | | | 1 | 1 | \$1,363.44 |
| DR07-396 | Alhambra Walgreens | | | | 1 | 1 | \$1,480.96 |
| DR07-405 | Budget Inn | | | | 1 | 1 | \$1,480.96 |
| DR08-074 | Riverside Target | | | | 1 | 1 | \$2,976.88 |
| DR08-086 | Morton's | | 1 | | | 1 | \$1,480.96 |
| DR08-140 | Liberty Plaza | | 1 | | | 1 | \$2,502.08 |
| DR08-143 | Sacramento Docks PUD | | | | 1 | 1 | \$1,363.44 |
| DR08-147 | 424 L Street Parking Lot | | 1 | | | 1 | \$1,730.96 |
| DR08-162 | CA State Lottery Building | | | | 1 | 1 | \$2,700.00 |
| DR08-170 | R Street Improvement Project | | | | 1 | 1 | \$1,620.00 |
| DR08-194 | Evergreen Fresh & Easy | | 1 | | | 1 | \$2,700.00 |
| DR08-202 | League of Cities | | 1 | | | 1 | \$3,101.20 |
| DR08-206 | Taco Bell | | 1 | | | 1 | \$2,700.00 |
| DR08-278 | Hot Italian | | 1 | | | 1 | \$2,700.00 |
| ER07-059 | 513 Blackwood | 1 | | | | 1 | \$1,240.00 |
| ER07-061 | Edgewater & Lochbrae Duplex | 1 | | | | 1 | \$62.40 |
| ER07-132 | 2075 Edgewater | 1 | | | | 1 | \$822.64 |
| ER07-162 | 531 Southgate | 1 | | | | 1 | \$822.64 |
| ER07-212 | 2216 Grand | 1 | | | | 1 | \$470.08 |
| ER08-037 | Bell Home | | 1 | | | 1 | \$611.92 |
| ER08-061 | 2508 Donner Way | | 1 | | | 1 | \$151.20 |
| M03-190 | McClellan Heights-Parker Homes | | | 1 | | 1 | |
| M05-021 | Form Based Codes | | | 1 | | 1 | |
| M05-048 | R Street Corridor SPD | | | 1 | | 1 | |
| M08-022 | Florin and Meadowview TODG | | | | 1 | 1 | |
| M08-046 | Theater Renovation | | | | 1 | 1 | |
| Total Hearings | | 25 | 20 | 33 | 21 | 99 | \$97,688.64 |

Typical hours

Rate \$140.00

Average project 4 story, 40,000-60,000 S.F. with 1 Review & Comment and 1 Final Action (2 hearings), DR staff hours only

Design Commission

| Application Intake task | time | Application Dist/ Assignment task | time | Application Review / Comments task | time | Application Issue Resolution task | time | Application Evaluation and Report task | time | Hearing Notification Hearing & Closeout task | time | Grand Total cost |
|-------------------------|------------|-----------------------------------|------------|------------------------------------|-------------|-----------------------------------|-----------|--|-----------|--|-----------|------------------------|
| Application Intake | 1.5 | Planner Assignment | 0.5 | Completeness Review | 1 | Meet with Applicant | 4 | Staff Report | 14 | Posting & Notification | 1 | |
| | | | | Routing | 1 | Neighborhood Issues | 3 | Accela Inputs | 1 | Hearing | 8 | |
| | | | | Project Review | 12.5 | Comment Letter | 3 | | | Closeout | 1 | |
| | | | | MRC | 1 | | | | | | | |
| | | | | Z/P Review | 1 | Revisions Resubmitted | 5 | | | | | |
| | | | | | | Resolution Issues | 6 | | | | | |
| Total | 1.5 | Total | 0.5 | Total | 16.5 | Total | 21 | Total | 15 | Total | 10 | 64.5 \$9,030.00 |

Design Director

Average project 2 story, 20,000-30,000 S.F. with Final Action (1 hearing), DR Staff hours only

| Application Intake task | time | Application Dist/ Assignment task | time | Application Review / Comments task | time | Application Issue Resolution task | time | Application Evaluation and Report task | time | Hearing Notification Hearing & Closeout task | time | Grand Total cost |
|-------------------------|------------|-----------------------------------|------------|------------------------------------|-----------|-----------------------------------|-------------|--|----------|--|----------|------------------------|
| Application Intake | 1.5 | Planner Assignment | 0.5 | Completeness Review | 1 | Meet with Applicant | 2 | Staff Report | 5 | Posting & Notification | 1 | |
| | | | | Routing | 1 | Neighborhood Issues | 2 | Accela Inputs | 1 | Hearing | 4 | |
| | | | | Project Review | 8 | Comment Letter | 2 | | | Closeout | 1 | |
| | | | | MRC | 1 | | | | | | | |
| | | | | Z/P Review | 1 | Revisions Resubmitted | 4 | | | | | |
| | | | | | | Resolution Issues | 3.5 | | | | | |
| Total | 1.5 | Total | 0.5 | Total | 12 | Total | 13.5 | Total | 6 | Total | 6 | 39.5 \$5,530.00 |

07/08 Concurrent Planning and Design Review Project Hearings

| | Planning File Number | DR File Number | Project Name | 07/08 ZA Hearings | 07/08 CPC Hearings | 07/08 DD Hearings | 07/08 DC Hearings | 07/08 CC Hearings | Total # of Hearings |
|-----------------------|-----------------------------|-----------------------|--------------------------------|--------------------------|---------------------------|--------------------------|--------------------------|--------------------------|----------------------------|
| 1 | P05-097 | P05-097 | Sacramento Railyards | | 7 | | 5 | 5 | 17 |
| 2 | P05-205 | DR05-402 | Metropolitan | | 3 | | 3 | 2 | 8 |
| 3 | P04-261 | DR07-119 | Westfield Downtown Plaza | | 2 | | 4 | | 6 |
| 4 | P06-047 | M07-029 | Township 9 | | 2 | | 3 | 1 | 6 |
| 5 | P05-161 | DR05-340 | Cathedral Square | | 2 | | 3 | | 5 |
| 6 | P07-120 | DR07-263 | 1601 Broadway | | 3 | 2 | | | 5 |
| 7 | P07-123 | DR07-283 | The Creamery | | 2 | | 2 | 1 | 5 |
| 8 | P06-211 | DR06-313 | Urban Living -3030 T | | 1 | 1 | 2 | | 4 |
| 9 | P07-071 | DR07-305 | Broadway Lofts | | 1 | 1 | 2 | | 4 |
| 10 | P07-002 | DR07-009 | 831 L Street | | 2 | | 2 | | 4 |
| 11 | Z08-092 | ER07-061 | Edgewater & Lochbrae Duplex | 1 | 2 | 1 | | | 4 |
| 12 | P07-021 | DR07-188 | The Green Building | | 1 | | 2 | | 3 |
| 13 | P08-090 | DR08-225 | Tribute Building | | 1 | | 2 | | 3 |
| 14 | P06-181 | DR07-067 | 27th and V | | 2 | 1 | | | 3 |
| 15 | P07-167 | DR07-405 | Budget Inn | | 1 | | 1 | 1 | 3 |
| 16 | P07-142 | DR08-140 | Liberty Plaza | 1 | | 1 | | 1 | 3 |
| 17 | Z08-001 | DR08-278 | Hot Italian | 2 | | 1 | | | 3 |
| 18 | Z08-097 | ER07-132 | 2075 Edgewater | 1 | 2 | | | | 3 |
| 19 | Z08-206 | ER08-073 | 38th Street Residence | 1 | | 1 | 1 | | 3 |
| 20 | M03-190 | M03-190 | McClellan Heights-Parker Homes | | 1 | | 1 | 1 | 3 |
| 21 | M05-048 | M05-048 | R Street Corridor SPD | | 1 | | 1 | 1 | 3 |
| 22 | P05-138 | DR05-300 | Epic | | 1 | | 1 | | 2 |
| 23 | P06-101 | DR06-162 | 1523 E Street Lofts | | 1 | 1 | | | 2 |
| 24 | P06-096 | DR06-173 | 301 University | | 1 | 1 | | | 2 |
| 25 | Z06-204 | DR06-260 | Shiloh Baptist Church | 1 | | 1 | | | 2 |
| 26 | P07-042 | DR07-109 | 300R Mixed Use | | 1 | 1 | | | 2 |
| 27 | Z07-168 | DR07-118 | Suzie Burger | 1 | | 1 | | | 2 |
| 28 | Z07-160 | DR07-230 | Kupros Bistro | 1 | | 1 | | | 2 |
| 29 | Z07-051 | DR07-065 | Alhambra & O Commercial Bldg | 1 | | 1 | | | 2 |
| 30 | P05-151/P05-152 | DR07-297 | East End Gateway 2 & 3 | | 1 | | 1 | | 2 |
| 31 | P07-145 | DR07-350 | Meridian II | | 1 | | 1 | | 2 |
| 32 | P07-155 | DR07-377 | REI addition | | 1 | 1 | | | 2 |
| 33 | P07-162 | DR07-389 | East End Gateway 1 | | 1 | | 1 | | 2 |
| 34 | P08-009 | DR07-396 | Alhambra Walgreens | | 1 | | 1 | | 2 |
| 35 | P08-034 | DR08-074 | Riverside Target | | 1 | | 1 | | 2 |
| 36 | Z08-157 | DR08-147 | 424 L Street Parking Lot | 1 | | 1 | | | 2 |
| 37 | P08-073 | DR08-162 | CA State Lottery Building | | 1 | | 1 | | 2 |
| 38 | P08-089 | DR08-194 | Evergreen Fresh & Easy | | 1 | 1 | | | 2 |
| 39 | Z08-232 | DR08-206 | Taco Bell | 1 | | 1 | | | 2 |
| 40 | P08-058 | DR08-143 | Sacramento Docks PUD | | | | 1 | | 1 |
| Total Hearings | | | | 12 | 48 | 20 | 42 | 13 | 135 |

The Sacramento Docks PUD project is not complete yet.