

CITY OF SACRAMENTO INFILL HOUSE PLAN PROGRAM

SCHEME - 3

1/4" = 1'-0"

Built Examples

January 2011



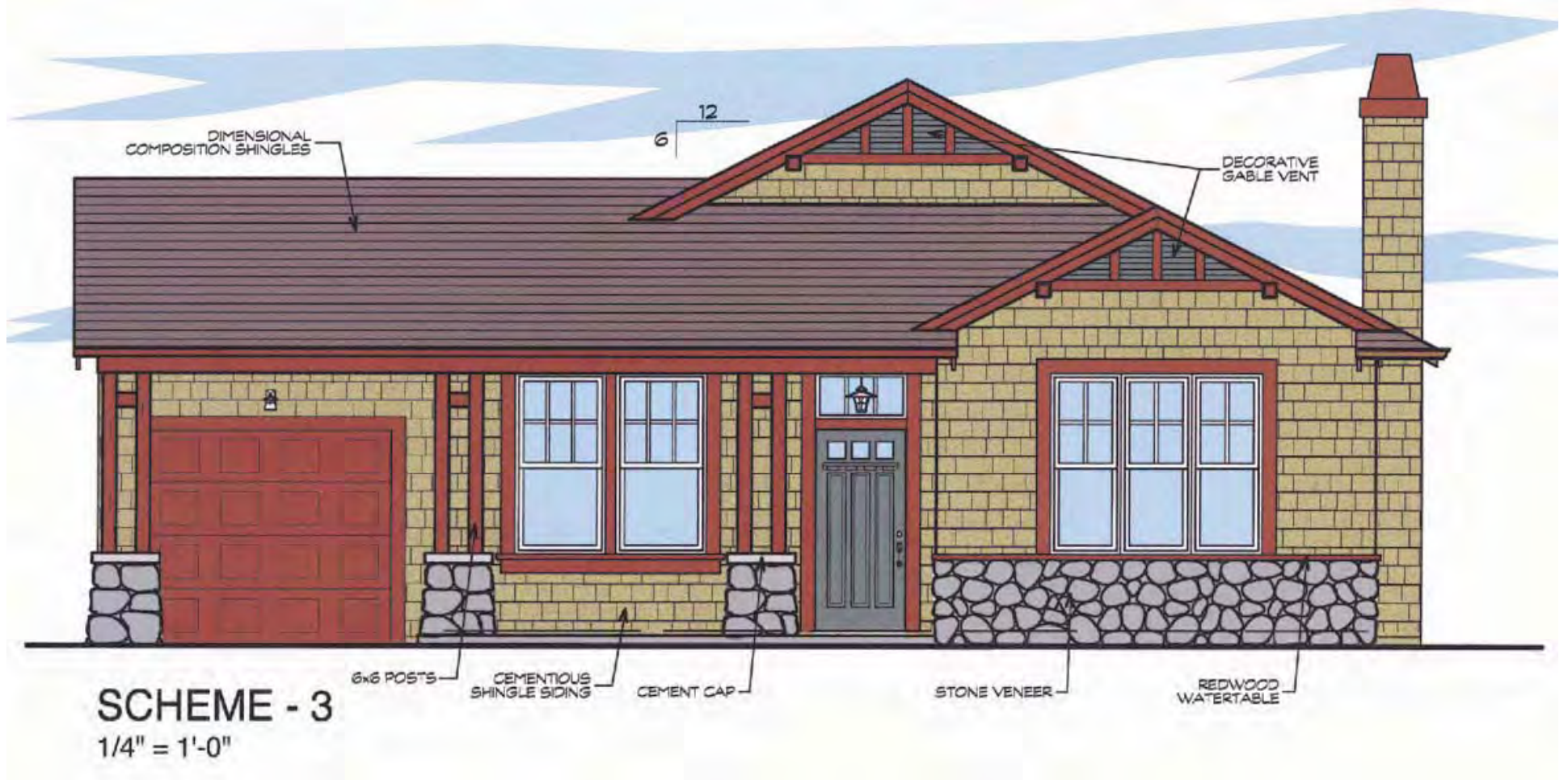
Easton Plan C – Elevation 1





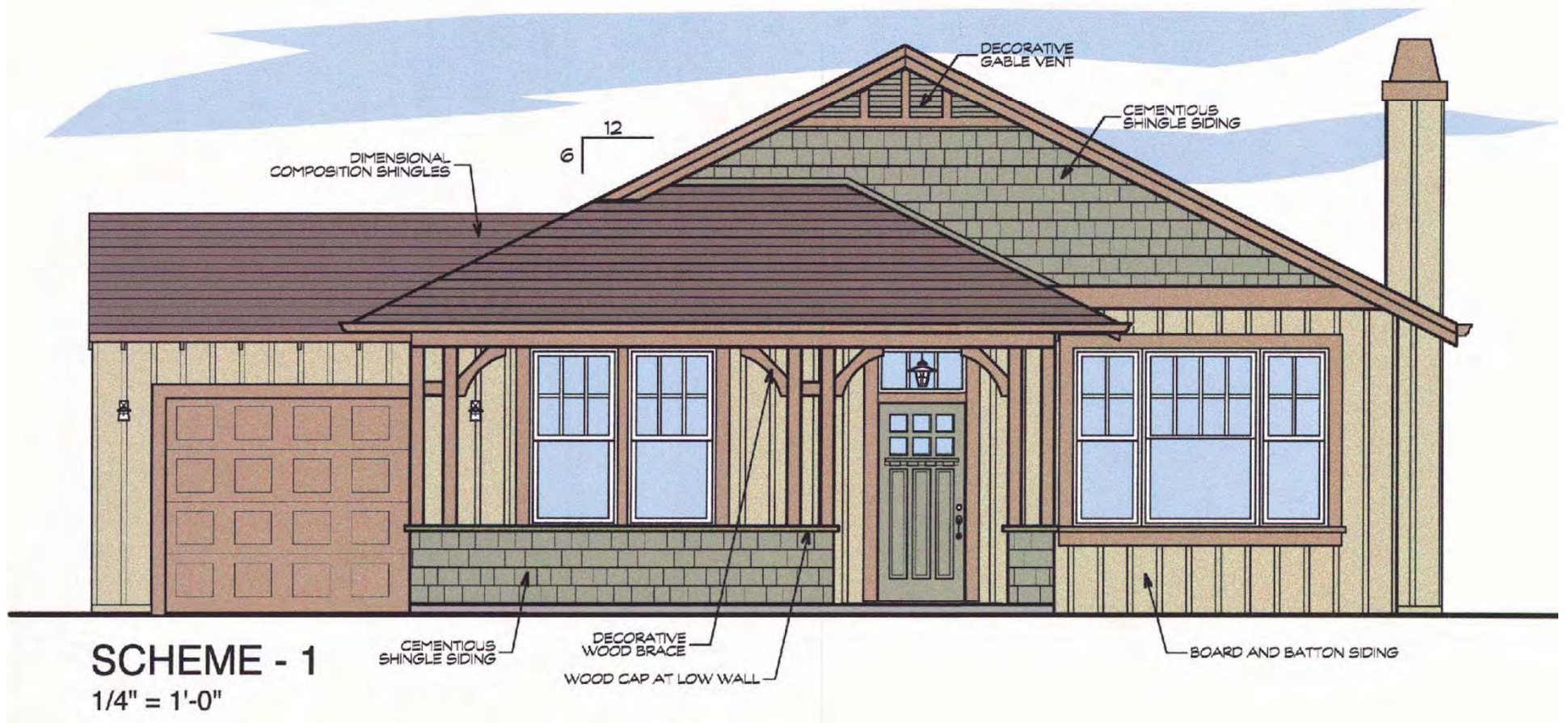


Piches Plan A – Elevation 1





Piches Plan B – Elevation 1





CONTACT INFORMATION

- **ARCHITECTS:**

- **Cynthia Easton Architects**

- 4532 Freeport Blvd.
Sacramento, CA 95822

- Tel: (916) 453-1505

- Fax: (916) 453-0843

- www.eastonarchitects.com

- **Piches Architecture**

- 115 Taylor Street
Roseville, CA 95678

- Tel: (916) 783-4624

- Fax: (916) 773-0417

- dpiches@surewest.net

- **CITY INFILL PROGRAM:**

- Desmond Parrington,

- Infill Coordinator

- City of Sacramento,

- Community Development Dept.

- 300 Richards Blvd, 3rd Floor

- Sacramento, CA 95811

- (916) 808-5044

- dparrington@cityofsacramento.org

WEBSITE: www.cityofsacramento.org/dsd/planning/infill-house-plan-program/