

APPENDIX J
NOISE MONITORING AND MODELING DATA

RESULTS: SOUND LEVELS

Sacramento Railyards

PBSJ													
NI													
26 July 2007													
TNM 2.5													
Calculated with TNM 2.5													
RESULTS: SOUND LEVELS													
PROJECT/CONTRACT: Sacramento Railyards													
RUN: Existing													
BARRIER DESIGN: INPUT HEIGHTS													
Average pavement type shall be used unless a State highway agency substantiates the use of a different type with approval of FHWA.													
ATMOSPHERICS: 68 deg F, 50% RH													
Receiver													
Name	No.	#DUs	Existing LAeq1h	No Barrier LAeq1h	Increase over existing			Type	With Barrier	Noise Reduction			
				Calculated	Crit'n	Calculated	Crit'n	Impact	Calculated LAeq1h	Calculated	Goal	Calculated	
							Sub'l Inc					minus Goal	
			dBA	dBA	dBA	dB	dB		dBA	dB	dB	dB	
517 7th Street	1	1	0.0	66.6	66	66.6	10	Snd Lvl	66.6	0.0	8	-8.0	
619 12th Street	2	1	0.0	69.9	66	69.9	10	Snd Lvl	69.9	0.0	8	-8.0	
EconoLodge 16th Street	3	1	0.0	71.1	66	71.1	10	Snd Lvl	71.1	0.0	8	-8.0	
Richard Blvd Housing	4	1	0.0	66.3	66	66.3	10	Snd Lvl	66.3	0.0	8	-8.0	
B Street Residence	5	1	0.0	63.7	66	63.7	10	----	63.7	0.0	8	-8.0	
Project Site at 7th Street	6	1	0.0	68.3	66	68.3	10	Snd Lvl	68.3	0.0	8	-8.0	
Dwelling Units		# DUs	Noise Reduction										
			Min	Avg	Max								
			dB	dB	dB								
All Selected		6	0.0	0.0	0.0								
All Impacted		5	0.0	0.0	0.0								
All that meet NR Goal		0	0.0	0.0	0.0								

RESULTS: SOUND LEVELS

Sacramento Railyards

PBSJ										26 July 2007			
NI										TNM 2.5			
										Calculated with TNM 2.5			
RESULTS: SOUND LEVELS													
PROJECT/CONTRACT:										Sacramento Railyards			
RUN:										Baseline			
BARRIER DESIGN:										INPUT HEIGHTS			
										Average pavement type shall be used unless a State highway agency substantiates the use of a different type with approval of FHWA.			
ATMOSPHERICS:										68 deg F, 50% RH			
Receiver													
Name		No.	#DUs	Existing	No Barrier			With Barrier					
				LAeq1h	LAeq1h		Increase over existing		Type	Calculated	Noise Reduction		
					Calculated	Crit'n	Calculated	Crit'n	Impact	LAeq1h	Calculated	Goal	Calculated
								Sub'l Inc					minus
				dB	dB	dB	dB	dB		dB	dB	dB	dB
517 7th Street		1	1	0.0	67.9	66	67.9	10	Snd Lvl	67.9	0.0	8	-8.0
619 12th Street		2	1	0.0	69.9	66	69.9	10	Snd Lvl	69.9	0.0	8	-8.0
EconoLodge 16th Street		3	1	0.0	71.2	66	71.2	10	Snd Lvl	71.2	0.0	8	-8.0
Richard Blvd Housing		4	1	0.0	68.2	66	68.2	10	Snd Lvl	68.2	0.0	8	-8.0
B Street Residence		5	1	0.0	64.7	66	64.7	10	----	64.7	0.0	8	-8.0
Project Site at 7th Street		6	1	0.0	69.6	66	69.6	10	Snd Lvl	69.6	0.0	8	-8.0
Dwelling Units			# DUs	Noise Reduction									
				Min	Avg	Max							
				dB	dB	dB							
All Selected			6	0.0	0.0	0.0							
All Impacted			5	0.0	0.0	0.0							
All that meet NR Goal			0	0.0	0.0	0.0							

RESULTS: SOUND LEVELS

Sacramento Railyards

PBSJ		26 July 2007										
NI		TNM 2.5										
		Calculated with TNM 2.5										
RESULTS: SOUND LEVELS												
PROJECT/CONTRACT:		Sacramento Railyards										
RUN:		Baseline plus Project										
BARRIER DESIGN:		INPUT HEIGHTS										
		Average pavement type shall be used unless a State highway agency substantiates the use of a different type with approval of FHWA.										
ATMOSPHERICS:		68 deg F, 50% RH										
Receiver												
Name	No.	#DUs	Existing LAeq1h	No Barrier LAeq1h	Increase over existing		Type	With Barrier		Noise Reduction		
				Calculated	Crit'n	Calculated	Crit'n	Impact	Calculated LAeq1h	Calculated	Goal	Calculated minus Goal
			dB	dB	dB	dB			dB	dB	dB	dB
517 7th Street	1	1	0.0	66.4	66	66.4	10	Snd Lvl	66.4	0.0	8	-8.0
619 12th Street	2	1	0.0	70.4	66	70.4	10	Snd Lvl	70.4	0.0	8	-8.0
EconoLodge 16th Street	3	1	0.0	71.4	66	71.4	10	Snd Lvl	71.4	0.0	8	-8.0
Richard Blvd Housing	4	1	0.0	68.6	66	68.6	10	Snd Lvl	68.6	0.0	8	-8.0
B Street Residence	5	1	0.0	67.2	66	67.2	10	Snd Lvl	67.2	0.0	8	-8.0
Project Site at 7th Street	6	1	0.0	68.0	66	68.0	10	Snd Lvl	68.0	0.0	8	-8.0
Dwelling Units		# DUs	Noise Reduction									
			Min	Avg	Max							
			dB	dB	dB							
All Selected		6	0.0	0.0	0.0							
All Impacted		6	0.0	0.0	0.0							
All that meet NR Goal		0	0.0	0.0	0.0							

RESULTS: SOUND LEVELS

Sacramento Railyards

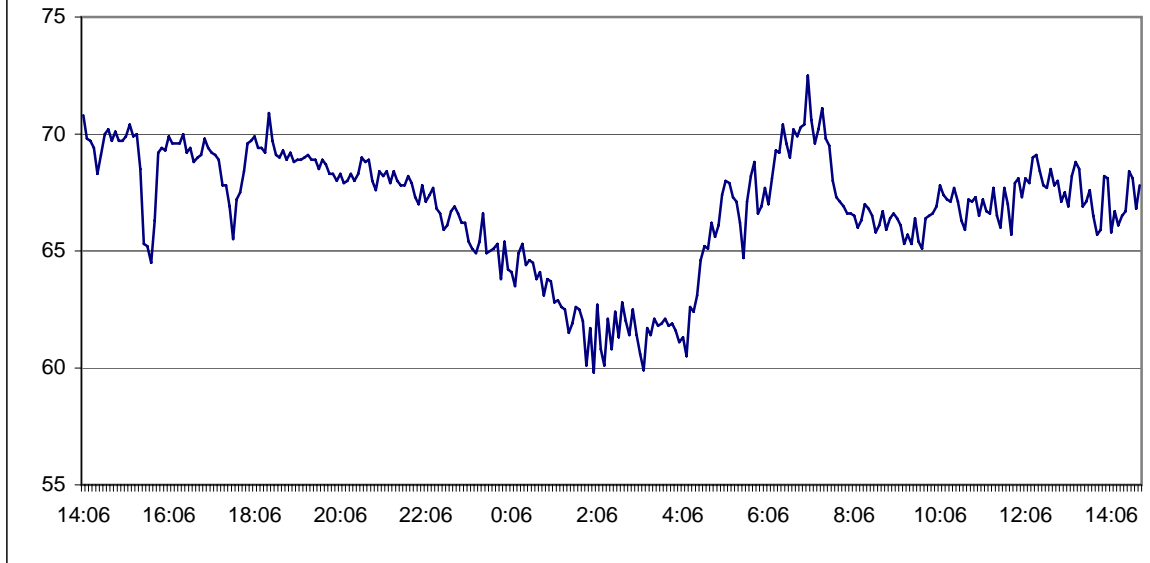
PBSJ										26 July 2007			
NI										TNM 2.5			
										Calculated with TNM 2.5			
RESULTS: SOUND LEVELS													
PROJECT/CONTRACT:										Sacramento Railyards			
RUN:										Year 2030 No Project			
BARRIER DESIGN:										INPUT HEIGHTS			
										Average pavement type shall be used unless a State highway agency substantiates the use of a different type with approval of FHWA.			
ATMOSPHERICS:										68 deg F, 50% RH			
Receiver													
Name		No.	#DUs	Existing LAeq1h	No Barrier LAeq1h	Increase over existing		Type	With Barrier		Noise Reduction		
					Calculated	Crit'n	Calculated	Crit'n	Impact	Calculated LAeq1h	Calculated	Goal	Calculated minus Goal
								Sub'l Inc					
				dB	dB	dB	dB			dB	dB	dB	dB
517 7th Street		1	1	0.0	71.5	66	71.5	10	Snd Lvl	71.5	0.0	8	-8.0
619 12th Street		2	1	0.0	70.5	66	70.5	10	Snd Lvl	70.5	0.0	8	-8.0
EconoLodge 16th Street		3	1	0.0	71.6	66	71.6	10	Snd Lvl	71.6	0.0	8	-8.0
Richard Blvd Housing		4	1	0.0	71.1	66	71.1	10	Snd Lvl	71.1	0.0	8	-8.0
B Street Residence		5	1	0.0	65.9	66	65.9	10	----	65.9	0.0	8	-8.0
Project Site at 7th Street		6	1	0.0	73.2	66	73.2	10	Snd Lvl	73.2	0.0	8	-8.0
Dwelling Units			# DUs	Noise Reduction									
				Min	Avg	Max							
				dB	dB	dB							
All Selected			6	0.0	0.0	0.0							
All Impacted			5	0.0	0.0	0.0							
All that meet NR Goal			0	0.0	0.0	0.0							

RESULTS: SOUND LEVELS

Sacramento Railyards

PBSJ													
NI													
26 July 2007													
TNM 2.5													
Calculated with TNM 2.5													
RESULTS: SOUND LEVELS													
PROJECT/CONTRACT: Sacramento Railyards													
RUN: Year 2030 plus Project													
BARRIER DESIGN: INPUT HEIGHTS													
Average pavement type shall be used unless a State highway agency substantiates the use of a different type with approval of FHWA.													
ATMOSPHERICS: 68 deg F, 50% RH													
Receiver													
Name	No.	#DUs	Existing LAeq1h	No Barrier LAeq1h	Increase over existing			Type	With Barrier	Noise Reduction			
				Calculated	Crit'n	Calculated	Crit'n	Impact	Calculated LAeq1h	Calculated	Goal	Calculated	
							Sub'l Inc					minus Goal	
			dBA	dBA	dBA	dB	dB		dBA	dB	dB	dB	
517 7th Street	1	1	0.0	67.8	66	67.8	10	Snd Lvl	67.8	0.0	8	-8.0	
619 12th Street	2	1	0.0	70.5	66	70.5	10	Snd Lvl	70.5	0.0	8	-8.0	
EconoLodge 16th Street	3	1	0.0	71.4	66	71.4	10	Snd Lvl	71.4	0.0	8	-8.0	
Richard Blvd Housing	4	1	0.0	69.6	66	69.6	10	Snd Lvl	69.6	0.0	8	-8.0	
B Street Residence	5	1	0.0	68.9	66	68.9	10	Snd Lvl	68.9	0.0	8	-8.0	
Project Site at 7th Street	6	1	0.0	69.5	66	69.5	10	Snd Lvl	69.5	0.0	8	-8.0	
Dwelling Units		# DUs	Noise Reduction										
			Min	Avg	Max								
			dB	dB	dB								
All Selected		6	0.0	0.0	0.0								
All Impacted		6	0.0	0.0	0.0								
All that meet NR Goal		0	0.0	0.0	0.0								

**Sacramento Railyards
24-Hour Noise Measurement near I-5**



289 # of Data Points
67.4 Leq (24 hour)
72.4 Ldn
49.0 Lmin
88.7 Lmax

C:\LARD AV\ SLMUTIL\28MAR_14.lin Interv al Dat a

Date	Time	Duration	Leq	Leq for Ldn	Lmax	Lmin	Uwpk	$10^{(Li/10)}/N_{tot}$	$10^{(Li/10)}/I$	for Ldn
28-Mar	7 14:06	300	70.8	70.8	88.7	65.9	114.4	41601	41601	
28-Mar	7 14:11	300	69.8	69.8	75.1	65.6	111.5	33045	33045	
28-Mar	7 14:16	300	69.7	69.7	74.7	65.9	104.9	32293	32293	
28-Mar	7 14:21	300	69.4	69.4	73.9	65.6	110.3	30137	30137	
28-Mar	7 14:26	300	68.3	68.3	72.6	64.1	117.2	23394	23394	
28-Mar	7 14:31	300	69.1	69.1	72.4	64.9	110.3	28126	28126	
28-Mar	7 14:36	300	70	70	74.5	65.8	110.9	34602	34602	

28-Mar	7	14:41	300	70.2	70.2	75.5	66.8	112.1	36233	36233
28-Mar	7	14:46	300	69.7	69.7	73.9	65.7	111.8	32293	32293
28-Mar	7	14:51	300	70.1	70.1	79	65.3	108.8	35408	35408
28-Mar	7	14:56	300	69.7	69.7	74.4	65.8	110.9	32293	32293
28-Mar	7	15:01	300	69.7	69.7	73.2	66	112.1	32293	32293
28-Mar	7	15:06	300	69.9	69.9	75.9	66.3	110.9	33814	33814
28-Mar	7	15:11	300	70.4	70.4	77.1	66.4	110.3	37940	37940
28-Mar	7	15:16	300	69.9	69.9	73.8	66.6	115.9	33814	33814
28-Mar	7	15:21	300	70	70	75.3	64.3	110.9	34602	34602
28-Mar	7	15:26	300	68.5	68.5	75.8	63.2	113.6	24496	24496
28-Mar	7	15:31	300	65.3	65.3	72.4	60.2	120	11725	11725
28-Mar	7	15:36	300	65.2	65.2	73.1	59.6	113.6	11458	11458
28-Mar	7	15:41	300	64.5	64.5	70.4	59.6	113.1	9752	9752
28-Mar	7	15:46	300	66.3	66.3	74.7	61.6	110.9	14761	14761
28-Mar	7	15:51	300	69.2	69.2	73.7	64.3	108	28781	28781
28-Mar	7	15:56	300	69.4	69.4	73.5	65.8	110.9	30137	30137
28-Mar	7	16:01	300	69.3	69.3	73.1	65.4	110.3	29451	29451
28-Mar	7	16:06	300	69.9	69.9	75.4	66.1	111.5	33814	33814
28-Mar	7	16:11	300	69.6	69.6	77.4	65.4	111.5	31557	31557
28-Mar	7	16:16	300	69.6	69.6	74.3	64.6	111.5	31557	31557
28-Mar	7	16:21	300	69.6	69.6	73.9	66	114.8	31557	31557
28-Mar	7	16:26	300	70	70	83.3	66.6	111.5	34602	34602
28-Mar	7	16:31	300	69.2	69.2	72.3	65.9	107.1	28781	28781
28-Mar	7	16:36	300	69.4	69.4	73.9	66.2	111.5	30137	30137
28-Mar	7	16:41	300	68.8	68.8	73.6	65.4	108.8	26248	26248
28-Mar	7	16:46	300	69	69	73.3	66.2	112.1	27485	27485
28-Mar	7	16:51	300	69.1	69.1	72.3	66.1	104.9	28126	28126
28-Mar	7	16:56	300	69.8	69.8	78.2	66.2	111.5	33045	33045
28-Mar	7	17:01	300	69.4	69.4	74.7	66.3	110.3	30137	30137
28-Mar	7	17:06	300	69.2	69.2	73.8	66.1	111.5	28781	28781
28-Mar	7	17:11	300	69.1	69.1	74.1	65.4	109.6	28126	28126
28-Mar	7	17:16	300	68.9	68.9	74.2	65.3	108.8	26860	26860
28-Mar	7	17:21	300	67.8	67.8	71.3	64.6	113.6	20850	20850
28-Mar	7	17:26	300	67.8	67.8	74.4	64.4	120.1	20850	20850
28-Mar	7	17:31	300	66.9	66.9	72.4	62.7	110.6	16947	16947
28-Mar	7	17:36	300	65.5	65.5	70.7	61.8	107.1	12277	12277
28-Mar	7	17:41	300	67.2	67.2	72.9	63.8	109.6	18159	18159
28-Mar	7	17:46	300	67.5	67.5	77.1	63.3	112.1	19458	19458

28-Mar	7	17:51	300	68.4	68.4	74.6	65.4	112.1	23939	23939
28-Mar	7	17:56	300	69.6	69.6	79.8	66.2	112.1	31557	31557
28-Mar	7	18:01	300	69.7	69.7	73.3	66.2	110.3	32293	32293
28-Mar	7	18:06	300	69.9	69.9	77.2	65.7	111.5	33814	33814
28-Mar	7	18:11	300	69.4	69.4	72.9	66.3	110.3	30137	30137
28-Mar	7	18:16	300	69.4	69.4	72.9	64.7	107.1	30137	30137
28-Mar	7	18:21	300	69.2	69.2	73.7	65.5	112.1	28781	28781
28-Mar	7	18:26	300	70.9	70.9	85.2	66.2	110.3	42570	42570
28-Mar	7	18:31	300	69.7	69.7	72.9	66.8	106.1	32293	32293
28-Mar	7	18:36	300	69.1	69.1	72.1	65.4	112.6	28126	28126
28-Mar	7	18:41	300	69	69	72.1	65.3	108	27485	27485
28-Mar	7	18:46	300	69.3	69.3	72.4	65.5	106.1	29451	29451
28-Mar	7	18:51	300	68.9	68.9	72	65.8	97.5	26860	26860
28-Mar	7	18:56	300	69.2	69.2	73.8	65.6	110.9	28781	28781
28-Mar	7	19:01	300	68.8	68.8	73.7	64.7	102	26248	26248
28-Mar	7	19:06	300	68.9	68.9	72.8	65.8	97.5	26860	26860
28-Mar	7	19:11	300	68.9	68.9	72.2	65.9	97.5	26860	26860
28-Mar	7	19:16	300	69	69	72.8	64.9	102	27485	27485
28-Mar	7	19:21	300	69.1	69.1	74.2	65.9	103.6	28126	28126
28-Mar	7	19:26	300	68.9	68.9	73.5	64.6	103.6	26860	26860
28-Mar	7	19:31	300	68.9	68.9	72.3	65.1	106.1	26860	26860
28-Mar	7	19:36	300	68.5	68.5	71.7	64.7	102	24496	24496
28-Mar	7	19:41	300	68.9	68.9	75.1	65.3	97.5	26860	26860
28-Mar	7	19:46	300	68.7	68.7	72.8	65.4	102	25651	25651
28-Mar	7	19:51	300	68.3	68.3	72.3	63.6	102	23394	23394
28-Mar	7	19:56	300	68.3	68.3	71.8	64.5	100	23394	23394
28-Mar	7	20:01	300	68	68	72.2	63.1	97.5	21832	21832
28-Mar	7	20:06	300	68.3	68.3	72.4	65.4	97.5	23394	23394
28-Mar	7	20:11	300	67.9	67.9	71.6	64.5	107.1	21335	21335
28-Mar	7	20:16	300	68	68	76.2	63	100	21832	21832
28-Mar	7	20:21	300	68.3	68.3	72.3	64	103.6	23394	23394
28-Mar	7	20:26	300	68	68	71.5	63.6	100	21832	21832
28-Mar	7	20:31	300	68.3	68.3	72.7	64.3	103.6	23394	23394
28-Mar	7	20:36	300	69	69	73.4	65.6	106.1	27485	27485
28-Mar	7	20:41	300	68.8	68.8	75.8	65.1	103.6	26248	26248
28-Mar	7	20:46	300	68.9	68.9	72.2	65.7	108	26860	26860
28-Mar	7	20:51	300	68	68	73.2	63.1	102	21832	21832
28-Mar	7	20:56	300	67.6	67.6	72.1	62.8	103.6	19911	19911

28-Mar	7	21:01	300	68.4	68.4	71.9	65.2	100	23939	23939
28-Mar	7	21:06	300	68.2	68.2	71.7	64	103.6	22861	22861
28-Mar	7	21:11	300	68.4	68.4	73.8	64	100	23939	23939
28-Mar	7	21:16	300	67.9	67.9	72.2	63.5	100	21335	21335
28-Mar	7	21:21	300	68.4	68.4	74.3	62.4	100	23939	23939
28-Mar	7	21:26	300	68	68	72.5	63.3	102	21832	21832
28-Mar	7	21:31	300	67.8	67.8	72.4	63	100	20850	20850
28-Mar	7	21:36	300	67.8	67.8	72.5	61.9	97.5	20850	20850
28-Mar	7	21:41	300	68.2	68.2	72.3	63.3	100	22861	22861
28-Mar	7	21:46	300	67.9	67.9	73.3	63.5	97.5	21335	21335
28-Mar	7	21:51	300	67.3	67.3	71.3	63.1	97.5	18582	18582
28-Mar	7	21:56	300	67	67	71	62.4	102	17342	17342
28-Mar	7	22:01	300	67.8	77.8	72.3	62.5	97.5	20850	208498
28-Mar	7	22:06	300	67.1	77.1	73.4	61.6	100	17746	177461
28-Mar	7	22:11	300	67.4	77.4	71.1	62.2	102	19015	190153
28-Mar	7	22:16	300	67.7	77.7	72	63.4	97.5	20375	203752
28-Mar	7	22:21	300	66.8	76.8	70.8	63	97.5	16562	165616
28-Mar	7	22:26	300	66.6	76.6	70.9	61.9	97.5	15816	158162
28-Mar	7	22:31	300	65.9	75.9	71	61.3	97.5	13462	134618
28-Mar	7	22:36	300	66.1	76.1	69.7	61.3	97.5	14096	140962
28-Mar	7	22:41	300	66.7	76.7	71	62.3	97.5	16185	161846
28-Mar	7	22:46	300	66.9	76.9	70.8	61.6	97.5	16947	169474
28-Mar	7	22:51	300	66.6	76.6	71.2	61.3	97.5	15816	158162
28-Mar	7	22:56	300	66.2	76.2	69.9	61.9	97.5	14425	144245
28-Mar	7	23:01	300	66.2	76.2	70.6	61.4	0	14425	144245
28-Mar	7	23:06	300	65.4	75.4	69.4	60.7	97.5	11998	119978
28-Mar	7	23:11	300	65.1	75.1	69.3	58.6	97.5	11197	111970
28-Mar	7	23:16	300	64.9	74.9	69.5	60.6	0	10693	106931
28-Mar	7	23:21	300	65.4	75.4	70.5	60.2	97.5	11998	119978
28-Mar	7	23:26	300	66.6	76.6	69.9	62	97.5	15816	158162
28-Mar	7	23:31	300	64.9	74.9	69.9	58.5	97.5	10693	106931
28-Mar	7	23:36	300	65	75	69.7	57.9	97.5	10942	109421
28-Mar	7	23:41	300	65.1	75.1	68.8	59.9	97.5	11197	111970
28-Mar	7	23:46	300	65.3	75.3	70.6	60.3	97.5	11725	117247
28-Mar	7	23:51	300	63.8	73.8	68.4	59.5	100	8300	83005
28-Mar	7	23:56	300	65.4	75.4	69.9	57.3	100	11998	119978
29-Mar	7	0:01	300	64.2	74.2	68.9	57.6	0	9101	91013
29-Mar	7	0:06	300	64.1	74.1	68.8	58.5	97.5	8894	88941

29-Mar	7	0:11	300	63.5	73.5	69.4	58	97.5	7746	77464
29-Mar	7	0:16	300	64.9	74.9	69.9	58	97.5	10693	106931
29-Mar	7	0:21	300	65.3	75.3	70	58.1	97.5	11725	117247
29-Mar	7	0:26	300	64.4	74.4	73.1	56.6	102	9530	95302
29-Mar	7	0:31	300	64.6	74.6	70.4	54.6	97.5	9979	99793
29-Mar	7	0:36	300	64.5	74.5	70.5	57.4	97.5	9752	97522
29-Mar	7	0:41	300	63.8	73.8	70.4	57.5	0	8300	83005
29-Mar	7	0:46	300	64.1	74.1	69.4	54.6	97.5	8894	88941
29-Mar	7	0:51	300	63.1	73.1	70.3	55.1	97.5	7065	70648
29-Mar	7	0:56	300	63.8	73.8	72	54.6	100	8300	83005
29-Mar	7	1:01	300	63.7	73.7	73	56.6	97.5	8112	81115
29-Mar	7	1:06	300	62.8	72.8	68.7	55.5	0	6593	65933
29-Mar	7	1:11	300	62.9	72.9	70	55.7	97.5	6747	67469
29-Mar	7	1:16	300	62.6	72.6	68.9	53.9	97.5	6297	62965
29-Mar	7	1:21	300	62.5	72.5	71	54.4	97.5	6153	61532
29-Mar	7	1:26	300	61.5	71.5	69.7	53.7	0	4888	48877
29-Mar	7	1:31	300	61.9	71.9	67.9	55.7	0	5359	53592
29-Mar	7	1:36	300	62.6	72.6	69.5	55.2	0	6297	62965
29-Mar	7	1:41	300	62.5	72.5	68.2	54.7	97.5	6153	61532
29-Mar	7	1:46	300	62	72	69	55	97.5	5484	54841
29-Mar	7	1:51	300	60.1	70.1	68.4	52.6	97.5	3541	35408
29-Mar	7	1:56	300	61.7	71.7	67.7	54.2	0	5118	51180
29-Mar	7	2:01	300	59.8	69.8	66.4	52.8	0	3304	33045
29-Mar	7	2:06	300	62.7	72.7	68.7	54.1	97.5	6443	64432
29-Mar	7	2:11	300	60.8	70.8	69.7	49	97.5	4160	41601
29-Mar	7	2:16	300	60.1	70.1	66.8	50.7	97.5	3541	35408
29-Mar	7	2:21	300	62.1	72.1	68	54.2	97.5	5612	56118
29-Mar	7	2:26	300	60.8	70.8	66.3	50.1	0	4160	41601
29-Mar	7	2:31	300	62.4	72.4	69.3	53.3	97.5	6013	60132
29-Mar	7	2:36	300	61.3	71.3	66.9	55.1	0	4668	46677
29-Mar	7	2:41	300	62.8	72.8	68.1	53.3	97.5	6593	65933
29-Mar	7	2:46	300	62	72	68.2	56.1	0	5484	54841
29-Mar	7	2:51	300	61.4	71.4	67.3	54.6	97.5	4776	47764
29-Mar	7	2:56	300	62.5	72.5	68.6	55.4	97.5	6153	61532
29-Mar	7	3:01	300	61.4	71.4	68.6	54.4	0	4776	47764
29-Mar	7	3:06	300	60.6	70.6	66	52.7	97.5	3973	39728
29-Mar	7	3:11	300	59.9	69.9	65.7	52.6	97.5	3381	33814
29-Mar	7	3:16	300	61.7	71.7	68.4	53.9	0	5118	51180

29-Mar	7	3:21	300	61.4	71.4	66.2	50.2	97.5	4776	47764
29-Mar	7	3:26	300	62.1	72.1	68.8	54.9	97.5	5612	56118
29-Mar	7	3:31	300	61.8	71.8	66.8	52.4	97.5	5237	52372
29-Mar	7	3:36	300	61.9	71.9	66	57.3	0	5359	53592
29-Mar	7	3:41	300	62.1	72.1	68.4	55.9	97.5	5612	56118
29-Mar	7	3:46	300	61.8	71.8	67	57.4	0	5237	52372
29-Mar	7	3:51	300	61.9	71.9	69.7	56	97.5	5359	53592
29-Mar	7	3:56	300	61.6	71.6	67.9	54	0	5002	50015
29-Mar	7	4:01	300	61.1	71.1	66.2	54	97.5	4458	44576
29-Mar	7	4:06	300	61.3	71.3	67	55.4	97.5	4668	46677
29-Mar	7	4:11	300	60.5	70.5	67.5	53.3	100	3882	38824
29-Mar	7	4:16	300	62.6	72.6	68.4	55.3	97.5	6297	62965
29-Mar	7	4:21	300	62.4	72.4	67.4	57.4	97.5	6013	60132
29-Mar	7	4:26	300	63.1	73.1	68.7	57.2	97.5	7065	70648
29-Mar	7	4:31	300	64.6	74.6	68.7	60.3	96	9979	99793
29-Mar	7	4:36	300	65.2	75.2	71.5	59.9	97.5	11458	114578
29-Mar	7	4:41	300	65.1	75.1	69.3	61.1	0	11197	111970
29-Mar	7	4:46	300	66.2	76.2	70	60.2	97.5	14425	144245
29-Mar	7	4:51	300	65.6	75.6	70.8	61.3	97.5	12563	125633
29-Mar	7	4:56	300	66.1	76.1	74.1	59.9	97.5	14096	140962
29-Mar	7	5:01	300	67.4	77.4	72.3	62.8	97.5	19015	190153
29-Mar	7	5:06	300	68	78	71.6	63.7	97.5	21832	218324
29-Mar	7	5:11	300	67.9	77.9	72.9	63.9	97.5	21335	213355
29-Mar	7	5:16	300	67.3	77.3	71.7	60.6	97.5	18582	185824
29-Mar	7	5:21	300	67.1	77.1	74.6	61.3	100	17746	177461
29-Mar	7	5:26	300	66.2	76.2	70.8	59.9	97.5	14425	144245
29-Mar	7	5:31	300	64.7	74.7	70.6	59.3	97.5	10212	102118
29-Mar	7	5:36	300	67.1	77.1	70.6	62.2	97.5	17746	177461
29-Mar	7	5:41	300	68.2	78.2	72.4	65.3	97.5	22861	228614
29-Mar	7	5:46	300	68.8	78.8	77.6	65.6	103.6	26248	262484
29-Mar	7	5:51	300	66.6	76.6	69.9	62.8	97.5	15816	158162
29-Mar	7	5:56	300	66.9	76.9	70.7	63.4	97.5	16947	169474
29-Mar	7	6:01	300	67.7	77.7	72.5	64.5	97.5	20375	203752
29-Mar	7	6:06	300	67	77	70.4	62.7	97.5	17342	173421
29-Mar	7	6:11	300	68.1	78.1	71.2	65.4	97.5	22341	223410
29-Mar	7	6:16	300	69.3	79.3	72.9	66.4	97.5	29451	294511
29-Mar	7	6:21	300	69.2	79.2	72.5	67.1	97.5	28781	287808
29-Mar	7	6:26	300	70.4	80.4	74.9	66.6	100	37940	379404

29-Mar	7	6:31	300	69.6	79.6	74	66.2	97.5	31557	315575
29-Mar	7	6:36	300	69	79	72.5	66.5	97.5	27485	274854
29-Mar	7	6:41	300	70.2	80.2	73.1	67.3	100	36233	362328
29-Mar	7	6:46	300	69.9	79.9	72.9	67.4	97.5	33814	338144
29-Mar	7	6:51	300	70.3	80.3	72.7	67.6	100	37077	370768
29-Mar	7	6:56	300	70.4	80.4	73	67.6	97.5	37940	379404
29-Mar	7	7:01	300	72.5	72.5	75.2	69.5	97.5	61532	61532
29-Mar	7	7:06	300	70.6	70.6	73.1	68.2	97.5	39728	39728
29-Mar	7	7:11	300	69.6	69.6	72.4	66.1	100	31557	31557
29-Mar	7	7:16	300	70.2	70.2	75	66.5	100	36233	36233
29-Mar	7	7:21	300	71.1	71.1	73.6	68.6	100	44576	44576
29-Mar	7	7:26	300	69.8	69.8	72.6	68	100	33045	33045
29-Mar	7	7:31	300	69.5	69.5	74.9	66.9	97.5	30839	30839
29-Mar	7	7:36	300	68	68	73.4	65.1	97.5	21832	21832
29-Mar	7	7:41	300	67.3	67.3	70.2	65	97.5	18582	18582
29-Mar	7	7:46	300	67.1	67.1	72.4	64.5	97.5	17746	17746
29-Mar	7	7:51	300	66.9	66.9	71.2	64.3	97.5	16947	16947
29-Mar	7	7:56	300	66.6	66.6	70.6	63.7	97.5	15816	15816
29-Mar	7	8:01	300	66.6	66.6	71.8	64.1	97.5	15816	15816
29-Mar	7	8:06	300	66.5	66.5	72.8	63.4	97.5	15456	15456
29-Mar	7	8:11	300	66	66	70.3	62.6	97.5	13775	13775
29-Mar	7	8:16	300	66.3	66.3	72	63.2	97.5	14761	14761
29-Mar	7	8:21	300	67	67	71.6	63.9	97.5	17342	17342
29-Mar	7	8:26	300	66.8	66.8	70.2	64.4	100	16562	16562
29-Mar	7	8:31	300	66.5	66.5	70.2	63.9	97.5	15456	15456
29-Mar	7	8:36	300	65.8	65.8	70.9	61.5	97.5	13155	13155
29-Mar	7	8:41	300	66.1	66.1	71.5	63.1	97.5	14096	14096
29-Mar	7	8:46	300	66.7	66.7	69.3	64	97.5	16185	16185
29-Mar	7	8:51	300	65.9	65.9	70.3	62.1	97.5	13462	13462
29-Mar	7	8:56	300	66.4	66.4	69.8	63.6	97.5	15104	15104
29-Mar	7	9:01	300	66.6	66.6	76.4	63	102	15816	15816
29-Mar	7	9:06	300	66.4	66.4	71.2	62.1	100	15104	15104
29-Mar	7	9:11	300	66.1	66.1	72.5	61.9	97.5	14096	14096
29-Mar	7	9:16	300	65.3	65.3	68.7	61.5	97.5	11725	11725
29-Mar	7	9:21	300	65.7	65.7	69.1	61.5	97.5	12856	12856
29-Mar	7	9:26	300	65.3	65.3	71.8	61.8	97.5	11725	11725
29-Mar	7	9:31	300	66.4	66.4	70.5	62.5	97.5	15104	15104
29-Mar	7	9:36	300	65.4	65.4	69.6	60.5	97.5	11998	11998

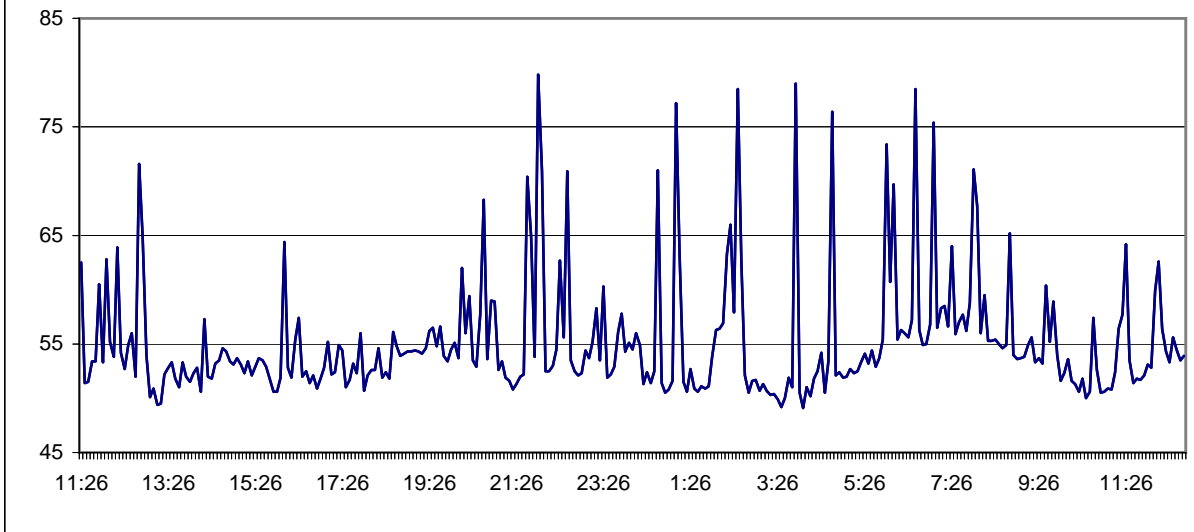
29-Mar	7	9:41	300	65.1	65.1	69.1	61.2	97.5	11197	11197
29-Mar	7	9:46	300	66.4	66.4	70.3	63.2	97.5	15104	15104
29-Mar	7	9:51	300	66.5	66.5	70.1	61.4	98.9	15456	15456
29-Mar	7	9:56	300	66.6	66.6	70.3	61.6	97.5	15816	15816
29-Mar	7	10:01	300	66.9	66.9	71	63.2	97.5	16947	16947
29-Mar	7	10:06	300	67.8	67.8	71	63.7	100	20850	20850
29-Mar	7	10:11	300	67.4	67.4	71	64.2	97.5	19015	19015
29-Mar	7	10:16	300	67.2	67.2	71.3	63.9	97.5	18159	18159
29-Mar	7	10:21	300	67.1	67.1	73.8	61.7	100	17746	17746
29-Mar	7	10:26	300	67.7	67.7	79.5	64	104.2	20375	20375
29-Mar	7	10:31	300	67.1	67.1	70.1	59.6	97.5	17746	17746
29-Mar	7	10:36	300	66.3	66.3	72.9	61.4	97.5	14761	14761
29-Mar	7	10:41	300	65.9	65.9	69.9	61.2	97.5	13462	13462
29-Mar	7	10:46	300	67.2	67.2	71.6	63.3	100	18159	18159
29-Mar	7	10:51	300	67.1	67.1	70.6	62.8	97.5	17746	17746
29-Mar	7	10:56	300	67.3	67.3	70.2	63.8	97.5	18582	18582
29-Mar	7	11:01	300	66.5	66.5	69.7	62.7	97.5	15456	15456
29-Mar	7	11:06	300	67.2	67.2	72.1	63.2	97.5	18159	18159
29-Mar	7	11:11	300	66.7	66.7	71.7	63.3	97.5	16185	16185
29-Mar	7	11:16	300	66.6	66.6	76.9	61.2	102	15816	15816
29-Mar	7	11:21	300	67.7	67.7	74.2	63.9	100	20375	20375
29-Mar	7	11:26	300	66.5	66.5	69.7	63	97.5	15456	15456
29-Mar	7	11:31	300	66	66	69.8	61.6	97.5	13775	13775
29-Mar	7	11:36	300	67.7	67.7	71.5	63.4	97.5	20375	20375
29-Mar	7	11:41	300	67	67	71.3	61.5	97.5	17342	17342
29-Mar	7	11:46	300	65.7	65.7	69.2	62.2	97.5	12856	12856
29-Mar	7	11:51	300	67.9	67.9	71.8	62.9	97.5	21335	21335
29-Mar	7	11:56	300	68.1	68.1	74	64.6	97.5	22341	22341
29-Mar	7	12:01	300	67.3	67.3	75.2	64.2	97.5	18582	18582
29-Mar	7	12:06	300	68.1	68.1	71.6	65.1	97.5	22341	22341
29-Mar	7	12:11	300	67.9	67.9	77.8	64	108	21335	21335
29-Mar	7	12:16	300	69	69	73	66	100	27485	27485
29-Mar	7	12:21	300	69.1	69.1	76.5	66	100	28126	28126
29-Mar	7	12:26	300	68.4	68.4	73.6	63.7	97.5	23939	23939
29-Mar	7	12:31	300	67.8	67.8	72.1	64	100	20850	20850
29-Mar	7	12:36	300	67.7	67.7	71	64.1	97.5	20375	20375
29-Mar	7	12:41	300	68.5	68.5	73.1	64.6	97.5	24496	24496
29-Mar	7	12:46	300	67.8	67.8	71.8	64.6	97.5	20850	20850

29-Mar	7	12:51	300	68	68	70.8	64.8	100	21832	21832
29-Mar	7	12:56	300	67.1	67.1	71.1	62.2	97.5	17746	17746
29-Mar	7	13:01	300	67.5	67.5	71.2	63.2	97.5	19458	19458
29-Mar	7	13:06	300	66.9	66.9	71.5	63.1	97.5	16947	16947
29-Mar	7	13:11	300	68.2	68.2	72.9	63.6	98.9	22861	22861
29-Mar	7	13:16	300	68.8	68.8	73.4	65.2	97.5	26248	26248
29-Mar	7	13:21	300	68.5	68.5	74.9	65.6	97.5	24496	24496
29-Mar	7	13:26	300	66.9	66.9	72.9	62.6	103.6	16947	16947
29-Mar	7	13:31	300	67.1	67.1	70.8	63.1	97.5	17746	17746
29-Mar	7	13:36	300	67.6	67.6	72.9	61.9	97.5	19911	19911
29-Mar	7	13:41	300	66.5	66.5	70.3	61.8	100	15456	15456
29-Mar	7	13:46	300	65.7	65.7	69.8	62.2	104.9	12856	12856
29-Mar	7	13:51	300	65.9	65.9	72	61.2	97.5	13462	13462
29-Mar	7	13:56	300	68.2	68.2	72.4	63.9	100	22861	22861
29-Mar	7	14:01	300	68.1	68.1	75.7	64.5	102	22341	22341
29-Mar	7	14:06	300	65.8	65.8	72.4	60.7	103.6	13155	13155
29-Mar	7	14:11	300	66.7	66.7	69.9	63.4	97.5	16185	16185
29-Mar	7	14:16	300	66.1	66.1	71.2	62.1	104.9	14096	14096
29-Mar	7	14:21	300	66.5	66.5	74.8	60	103.6	15456	15456
29-Mar	7	14:26	300	66.7	66.7	76.1	62	107.1	16185	16185
29-Mar	7	14:31	300	68.4	68.4	75.3	64.1	102	23939	23939
29-Mar	7	14:36	300	68.1	68.1	72.1	63.8	97.5	22341	22341
29-Mar	7	14:41	300	66.8	66.8	71.5	62.6	97.5	16562	16562
29-Mar	7	14:46	182.5	67.8	67.8	78.8	65	104.9	20850	20850

5508611 17501614

289 # of Data Points
67.4 Leq Total
72.4 Ldn
49.0 Lmin
88.7 Lmax

**Sacramento Railyards
24-Hour Noise Measurement near UP Railroad**



289 # of Data Points
63.7 Leq (24 Hour)
71.8 Ldn
46.4 Lmin
100.1 Lmax

Date	Time	Duration	Leq	Leq for Ldn	Lmax	Lmin	Uwpk	$10^{(Li/10)}/N_{tot}$	$10^{(Li/10)}/I_{for Ldn}$
3-Apr	7 11:26	300	62.5	62.5	85.2	47.6	109	6153	6153
3-Apr	7 11:31	300	51.4	51.4	54.9	48.9	0	478	478
3-Apr	7 11:36	300	51.5	51.5	55.3	49.1	0	489	489
3-Apr	7 11:41	300	53.4	53.4	58.5	50.9	0	757	757
3-Apr	7 11:46	300	53.4	53.4	62.2	49.9	97	757	757
3-Apr	7 11:51	300	60.5	60.5	79.2	49.5	97	3882	3882
3-Apr	7 11:56	300	53.3	53.3	76.2	48	97	740	740
3-Apr	7 12:01	300	62.8	62.8	80.2	47.7	103	6593	6593
3-Apr	7 12:06	300	55.2	55.2	71.6	47.5	0	1146	1146
3-Apr	7 12:11	300	53.8	53.8	66.6	47.1	0	830	830

3-Apr	7	12:16	300	63.9	63.9	88.9	46.9	103	8494	8494
3-Apr	7	12:21	300	54.2	54.2	73.6	48	0	910	910
3-Apr	7	12:26	300	52.7	52.7	61.2	49.5	0	644	644
3-Apr	7	12:31	300	54.9	54.9	68	49.8	0	1069	1069
3-Apr	7	12:36	300	56	56	72.4	49.7	0	1378	1378
3-Apr	7	12:41	300	52	52	65.4	48.4	0	548	548
3-Apr	7	12:46	300	71.6	71.6	89.4	48.4	104.3	50015	50015
3-Apr	7	12:51	300	64.9	64.9	77.8	49.2	99.5	10693	10693
3-Apr	7	12:56	300	53.9	53.9	70.2	48.6	0	849	849
3-Apr	7	13:01	300	50.1	50.1	55.3	47	0	354	354
3-Apr	7	13:06	300	50.9	50.9	58.7	48	0	426	426
3-Apr	7	13:11	300	49.4	49.4	53.5	47.3	0	301	301
3-Apr	7	13:16	300	49.5	49.5	52.4	46.8	0	308	308
3-Apr	7	13:21	300	52.2	52.2	66	47.2	0	574	574
3-Apr	7	13:26	300	52.8	52.8	65.6	49	0	659	659
3-Apr	7	13:31	300	53.3	53.3	63.7	48.7	0	740	740
3-Apr	7	13:36	300	51.8	51.8	61	46.4	0	524	524
3-Apr	7	13:41	300	51	51	57.5	47.6	0	436	436
3-Apr	7	13:46	300	53.3	53.3	62.8	49.3	99.5	740	740
3-Apr	7	13:51	300	52	52	57.6	48.4	0	548	548
3-Apr	7	13:56	300	51.5	51.5	56.2	49.4	97	489	489
3-Apr	7	14:01	300	52.3	52.3	57.5	49.8	0	588	588
3-Apr	7	14:06	300	52.8	52.8	65.9	49.1	0	659	659
3-Apr	7	14:11	300	50.6	50.6	59.8	47.5	97	397	397
3-Apr	7	14:16	300	57.3	57.3	73.2	48.7	97	1858	1858
3-Apr	7	14:21	300	52	52	58.2	49	0	548	548
3-Apr	7	14:26	300	51.8	51.8	62.3	49.1	0	524	524
3-Apr	7	14:31	300	53.2	53.2	57.5	50.8	0	723	723
3-Apr	7	14:36	300	53.5	53.5	57.1	50.5	0	775	775
3-Apr	7	14:41	300	54.6	54.6	65.8	50.7	97	998	998
3-Apr	7	14:46	300	54.3	54.3	62.3	51.2	0	931	931
3-Apr	7	14:51	300	53.4	53.4	58.7	50.7	0	757	757
3-Apr	7	14:56	300	53.1	53.1	56.8	51	97	706	706
3-Apr	7	15:01	300	53.7	53.7	59	50.8	97	811	811
3-Apr	7	15:06	300	53.1	53.1	60	49.5	97	706	706
3-Apr	7	15:11	300	52.3	52.3	58.6	49.6	0	588	588
3-Apr	7	15:16	300	53.4	53.4	68.5	50	97	757	757

3-Apr	7	15:21	300	52.1	52.1	55.9	49.4	0	561	561
3-Apr	7	15:26	300	52.9	52.9	58.9	49.4	0	675	675
3-Apr	7	15:31	300	53.7	53.7	69.4	50.9	0	811	811
3-Apr	7	15:36	300	53.5	53.5	69	49.5	0	775	775
3-Apr	7	15:41	300	52.9	52.9	65.4	48.7	0	675	675
3-Apr	7	15:46	300	51.8	51.8	58.9	48.5	0	524	524
3-Apr	7	15:51	300	50.6	50.6	56.9	48.2	0	397	397
3-Apr	7	15:56	300	50.6	50.6	56	48	0	397	397
3-Apr	7	16:01	300	51.9	51.9	59	47.6	0	536	536
3-Apr	7	16:06	300	64.4	64.4	84.8	50.7	101.5	9530	9530
3-Apr	7	16:11	300	52.8	52.8	58.6	49.4	0	659	659
3-Apr	7	16:16	300	51.9	51.9	56.3	49.6	0	536	536
3-Apr	7	16:21	300	55.4	55.4	65.4	51.7	0	1200	1200
3-Apr	7	16:26	300	57.4	57.4	68.7	50.3	97	1902	1902
3-Apr	7	16:31	300	52	52	65.2	49.7	101.5	548	548
3-Apr	7	16:36	300	52.5	52.5	69.5	48.8	0	615	615
3-Apr	7	16:41	300	51.4	51.4	59.1	48.4	0	478	478
3-Apr	7	16:46	300	52.1	52.1	58.7	47.8	0	561	561
3-Apr	7	16:51	300	50.9	50.9	54	48.1	0	426	426
3-Apr	7	16:56	300	51.8	51.8	61.6	49.2	0	524	524
3-Apr	7	17:01	300	52.8	52.8	61.1	50.3	0	659	659
3-Apr	7	17:06	300	55.2	55.2	67.8	51	0	1146	1146
3-Apr	7	17:11	300	52.2	52.2	58.1	48.9	0	574	574
3-Apr	7	17:16	300	52.4	52.4	60.1	48	0	601	601
3-Apr	7	17:21	300	54.9	54.9	68.8	49.5	99.5	1069	1069
3-Apr	7	17:26	300	54.4	54.4	68.1	48.4	99.5	953	953
3-Apr	7	17:31	300	51	51	56	48.4	0	436	436
3-Apr	7	17:36	300	51.7	51.7	61.8	47.8	0	512	512
3-Apr	7	17:41	300	53.2	53.2	62.7	49.4	0	723	723
3-Apr	7	17:46	300	52.3	52.3	61.5	47.6	0	588	588
3-Apr	7	17:51	300	56	56	74.4	47.6	0	1378	1378
3-Apr	7	17:56	300	50.7	50.7	59	47.4	0	407	407
3-Apr	7	18:01	300	52.1	52.1	62.6	48.2	0	561	561
3-Apr	7	18:06	300	52.6	52.6	61.2	50	99.5	630	630
3-Apr	7	18:11	300	52.6	52.6	61.4	49.5	0	630	630
3-Apr	7	18:16	300	54.6	54.6	65.2	50.1	0	998	998
3-Apr	7	18:21	300	51.9	51.9	57.6	49.8	0	536	536

3-Apr	7	18:26	300	52.4	52.4	58.7	49	0	601	601
3-Apr	7	18:31	300	51.8	51.8	60.2	48.5	0	524	524
3-Apr	7	18:36	300	56.1	56.1	76.3	50.4	0	1410	1410
3-Apr	7	18:41	300	54.8	54.8	69.9	49.8	97	1045	1045
3-Apr	7	18:46	300	53.9	53.9	61	51.4	0	849	849
3-Apr	7	18:51	300	54.1	54.1	57.2	51.1	97	889	889
3-Apr	7	18:56	300	54.3	54.3	60.5	51.6	0	931	931
3-Apr	7	19:01	300	54.3	54.3	59.7	52	0	931	931
3-Apr	7	19:06	300	54.4	54.4	65.2	51.4	0	953	953
3-Apr	7	19:11	300	54.3	54.3	58.9	51.6	97	931	931
3-Apr	7	19:16	300	54.1	54.1	57	51.6	0	889	889
3-Apr	7	19:21	300	54.6	54.6	61	51.7	101.5	998	998
3-Apr	7	19:26	300	56.2	56.2	70.8	52.3	99.5	1442	1442
3-Apr	7	19:31	300	56.5	56.5	71.9	52.4	98.3	1546	1546
3-Apr	7	19:36	300	54.8	54.8	60.3	52	97	1045	1045
3-Apr	7	19:41	300	56.6	56.6	71.5	51.5	95.4	1582	1582
3-Apr	7	19:46	300	53.9	53.9	70.2	51	0	849	849
3-Apr	7	19:51	300	53.4	53.4	57.5	50.3	0	757	757
3-Apr	7	19:56	300	54.5	54.5	58.4	52.6	0	975	975
3-Apr	7	20:01	300	55.1	55.1	60.4	52.9	0	1120	1120
3-Apr	7	20:06	300	53.7	53.7	56.4	51.3	97	811	811
3-Apr	7	20:11	300	62	62	73.5	53	103	5484	5484
3-Apr	7	20:16	300	56	56	67.3	52.9	0	1378	1378
3-Apr	7	20:21	300	59.4	59.4	79.8	53	97	3014	3014
3-Apr	7	20:26	300	53.5	53.5	60.1	50.6	0	775	775
3-Apr	7	20:31	300	52.9	52.9	62.7	50.6	0	675	675
3-Apr	7	20:36	300	57.7	57.7	76.3	50.9	97	2038	2038
3-Apr	7	20:41	300	68.3	68.3	79.5	52.6	107.5	23394	23394
3-Apr	7	20:46	300	53.6	53.6	58.8	50.5	0	793	793
3-Apr	7	20:51	300	59	59	80.1	50.7	99.5	2749	2749
3-Apr	7	20:56	300	58.9	58.9	71.1	51.1	101.5	2686	2686
3-Apr	7	21:01	300	52.6	52.6	56.3	50.6	0	630	630
3-Apr	7	21:06	300	53.4	53.4	74.5	49.9	0	757	757
3-Apr	7	21:11	300	51.9	51.9	55.9	50.4	0	536	536
3-Apr	7	21:16	300	51.6	51.6	56.7	49.4	0	500	500
3-Apr	7	21:21	300	50.8	50.8	53.7	49	0	416	416
3-Apr	7	21:26	300	51.3	51.3	56.8	48.8	0	467	467

3-Apr	7	21:31	300	52	52	59	49.5	0	548	548
3-Apr	7	21:36	300	52.2	52.2	60.7	50	0	574	574
3-Apr	7	21:41	300	70.4	70.4	87	50.9	109	37940	37940
3-Apr	7	21:46	300	64.9	64.9	80.4	51.6	101.5	10693	10693
3-Apr	7	21:51	300	53.8	53.8	61.7	51.6	0	830	830
3-Apr	7	21:56	300	79.8	79.8	100	51.5	111	330447	330447
3-Apr	7	22:01	300	70.9	70.9	85.8	51.2	104.3	42570	42570
3-Apr	7	22:06	300	52.5	62.5	58.2	50.5	0	615	6153
3-Apr	7	22:11	300	52.5	62.5	62.3	50.1	0	615	6153
3-Apr	7	22:16	300	53	63	56.1	51.1	0	690	6904
3-Apr	7	22:21	300	54.5	64.5	74.6	51.2	97	975	9752
3-Apr	7	22:26	300	62.7	72.7	69.8	52.4	99.5	6443	64432
3-Apr	7	22:31	300	55.6	65.6	67.1	51.9	0	1256	12563
3-Apr	7	22:36	300	70.9	80.9	82.7	52.6	105.5	42570	425699
3-Apr	7	22:41	300	53.5	63.5	59.7	51.2	0	775	7746
3-Apr	7	22:46	300	52.5	62.5	57.8	50.7	0	615	6153
3-Apr	7	22:51	300	52.1	62.1	56.1	49.9	0	561	5612
3-Apr	7	22:56	300	52.3	62.3	56.7	50.2	0	588	5876
3-Apr	7	23:01	300	54.4	64.4	65.3	50	0	953	9530
3-Apr	7	23:06	300	53.7	63.7	68	50.4	0	811	8112
3-Apr	7	23:11	300	55.2	65.2	68.9	50.7	0	1146	11458
3-Apr	7	23:16	300	58.3	68.3	76.6	51	101.5	2339	23394
3-Apr	7	23:21	300	53.5	63.5	60.7	50.8	0	775	7746
3-Apr	7	23:26	300	60.3	70.3	74	50.7	99.5	3708	37077
3-Apr	7	23:31	300	51.9	61.9	55.5	49.9	0	536	5359
3-Apr	7	23:36	300	52.2	62.2	55.6	50.2	0	574	5743
3-Apr	7	23:41	300	52.9	62.9	66.1	50.3	0	675	6747
3-Apr	7	23:46	300	56.1	66.1	68.5	49.6	99.5	1410	14096
3-Apr	7	23:51	300	57.8	67.8	69.5	49.8	101.5	2085	20850
3-Apr	7	23:56	300	54.3	64.3	64.4	49.7	0	931	9313
4-Apr	7	0:01	300	55.1	65.1	79.1	50.6	0	1120	11197
4-Apr	7	0:06	300	54.5	64.5	69.6	49.9	0	975	9752
4-Apr	7	0:11	300	56	66	68.4	50.4	0	1378	13775
4-Apr	7	0:16	300	54.9	64.9	66.9	50.4	0	1069	10693
4-Apr	7	0:21	300	51.3	61.3	54.7	49	0	467	4668
4-Apr	7	0:26	300	52.4	62.4	64.7	49	0	601	6013
4-Apr	7	0:31	300	51.4	61.4	54.2	49.4	0	478	4776

4-Apr	7	0:36	300	52.5	62.5	66.1	49.5	97	615	6153
4-Apr	7	0:41	300	71	81	85	51.5	108.3	43561	435614
4-Apr	7	0:46	300	51.4	61.4	58.6	49.2	0	478	4776
4-Apr	7	0:51	300	50.5	60.5	54.1	47.8	0	388	3882
4-Apr	7	0:56	300	50.8	60.8	53.2	48.7	0	416	4160
4-Apr	7	1:01	300	51.6	61.6	55.7	49.3	0	500	5002
4-Apr	7	1:06	300	77.2	87.2	98.5	49.1	109.7	181594	1815943
4-Apr	7	1:11	300	63.2	73.2	79.1	49.1	104.3	7229	72294
4-Apr	7	1:16	300	51.5	61.5	54.8	49	0	489	4888
4-Apr	7	1:21	300	50.6	60.6	52.8	48.6	0	397	3973
4-Apr	7	1:26	300	52.7	62.7	65.6	48	0	644	6443
4-Apr	7	1:31	300	50.9	60.9	64.1	48.1	0	426	4257
4-Apr	7	1:36	300	50.6	60.6	63	47.8	0	397	3973
4-Apr	7	1:41	300	51.1	61.1	59	48.7	0	446	4458
4-Apr	7	1:46	300	50.9	60.9	54.1	48.5	0	426	4257
4-Apr	7	1:51	300	51.1	61.1	55.2	48.6	0	446	4458
4-Apr	7	1:56	300	53.9	63.9	62.5	48.6	0	849	8494
4-Apr	7	2:01	300	56.3	66.3	59.4	53.6	0	1476	14761
4-Apr	7	2:06	300	56.4	66.4	60.9	53.4	0	1510	15104
4-Apr	7	2:11	300	56.9	66.9	59.9	53.8	97	1695	16947
4-Apr	7	2:16	300	63.3	73.3	75.7	54.4	105.5	7398	73978
4-Apr	7	2:21	300	66	76	76.2	55.4	105.5	13775	137753
4-Apr	7	2:26	300	57.9	67.9	60.2	55.1	97	2134	21335
4-Apr	7	2:31	300	78.5	88.5	100.1	55.6	109.7	244964	2449639
4-Apr	7	2:36	300	62.6	72.6	80.6	48.8	104.3	6297	62965
4-Apr	7	2:41	300	52.1	62.1	56.6	49.6	97	561	5612
4-Apr	7	2:46	300	50.5	60.5	53.9	48.3	0	388	3882
4-Apr	7	2:51	300	51.6	61.6	55.2	48.9	0	500	5002
4-Apr	7	2:56	300	51.7	61.7	62.7	48.9	0	512	5118
4-Apr	7	3:01	300	50.7	60.7	52.9	48.8	0	407	4065
4-Apr	7	3:06	300	51.3	61.3	54.6	48.8	0	467	4668
4-Apr	7	3:11	300	50.7	60.7	54.7	48.7	0	407	4065
4-Apr	7	3:16	300	50.3	60.3	53.1	48.4	0	371	3708
4-Apr	7	3:21	300	50.4	60.4	52.7	48.6	0	379	3794
4-Apr	7	3:26	300	49.9	59.9	54.8	47.1	0	338	3381
4-Apr	7	3:31	300	49.2	59.2	51.3	47.2	0	288	2878
4-Apr	7	3:36	300	50	60	53	47.7	0	346	3460

4-Apr	7	3:41	300	51.9	61.9	67.9	47.2	0	536	5359
4-Apr	7	3:46	300	51	61	59.8	46.9	0	436	4356
4-Apr	7	3:51	300	79	89	98.5	48.6	109	274854	2748541
4-Apr	7	3:56	300	50.5	60.5	53.7	47.8	0	388	3882
4-Apr	7	4:01	300	49.1	59.1	51.6	46.7	0	281	2813
4-Apr	7	4:06	300	51	61	54.7	48.5	0	436	4356
4-Apr	7	4:11	300	50.2	60.2	53.3	47.6	0	362	3623
4-Apr	7	4:16	300	51.8	61.8	61.1	48.6	0	524	5237
4-Apr	7	4:21	300	52.5	62.5	55.9	50.1	97	615	6153
4-Apr	7	4:26	300	54.2	64.2	75	50.1	0	910	9101
4-Apr	7	4:31	300	50.5	60.5	53.3	48.6	0	388	3882
4-Apr	7	4:36	300	53.4	63.4	68.4	48.7	97	757	7570
4-Apr	7	4:41	300	76.4	86.4	94.7	50.8	109	151044	1510435
4-Apr	7	4:46	300	52.1	62.1	57.6	49.4	0	561	5612
4-Apr	7	4:51	300	52.4	62.4	56.4	50.4	0	601	6013
4-Apr	7	4:56	300	51.9	61.9	53.9	50.2	0	536	5359
4-Apr	7	5:01	300	52	62	58.9	49.8	97	548	5484
4-Apr	7	5:06	300	52.7	62.7	60.5	50.2	0	644	6443
4-Apr	7	5:11	300	52.3	62.3	58.9	50.2	0	588	5876
4-Apr	7	5:16	300	52.5	62.5	55.9	50.3	0	615	6153
4-Apr	7	5:21	300	53.3	63.3	56.5	50.9	0	740	7398
4-Apr	7	5:26	300	54.1	64.1	60.3	51.9	0	889	8894
4-Apr	7	5:31	300	53.2	63.2	57	51.7	0	723	7229
4-Apr	7	5:36	300	54.4	64.4	61.2	51.8	0	953	9530
4-Apr	7	5:41	300	52.9	62.9	56.3	50.9	0	675	6747
4-Apr	7	5:46	300	53.7	63.7	56.5	51.9	0	811	8112
4-Apr	7	5:51	300	55.4	65.4	61	53	0	1200	11998
4-Apr	7	5:56	300	73.4	83.4	85.2	53.5	107.5	75701	757011
4-Apr	7	6:01	300	60.7	70.7	74.9	52.4	99.5	4065	40654
4-Apr	7	6:06	300	69.7	79.7	86.6	53	99.5	32293	322925
4-Apr	7	6:11	300	55.4	65.4	61.9	52.8	0	1200	11998
4-Apr	7	6:16	300	56.3	66.3	66	52.6	0	1476	14761
4-Apr	7	6:21	300	56	66	64.9	52.8	0	1378	13775
4-Apr	7	6:26	300	55.6	65.6	69.9	53	0	1256	12563
4-Apr	7	6:31	300	57.2	67.2	70.8	53.8	97	1816	18159
4-Apr	7	6:36	300	78.5	88.5	98.3	53.9	109	244964	2449639
4-Apr	7	6:41	300	56.3	66.3	61.5	53.8	0	1476	14761

4-Apr	7	6:46	300	54.9	64.9	59.6	52.9	0	1069	10693
4-Apr	7	6:51	300	55	65	63.1	52.5	0	1094	10942
4-Apr	7	6:56	300	56.8	66.8	70.1	52.6	97	1656	16562
4-Apr	7	7:01	300	75.4	75.4	95.5	54.6	108.3	119978	119978
4-Apr	7	7:06	300	56.5	56.5	61.1	54	0	1546	1546
4-Apr	7	7:11	300	58.3	58.3	67.8	53.8	97	2339	2339
4-Apr	7	7:16	300	58.5	58.5	67.6	55	0	2450	2450
4-Apr	7	7:21	300	56.6	56.6	63	54.8	0	1582	1582
4-Apr	7	7:26	300	64	64	83.6	54.3	99.5	8692	8692
4-Apr	7	7:31	300	55.9	55.9	60.4	54.2	0	1346	1346
4-Apr	7	7:36	300	57	57	61.4	54.1	0	1734	1734
4-Apr	7	7:41	300	57.7	57.7	68.5	54.3	0	2038	2038
4-Apr	7	7:46	300	56.2	56.2	65.4	54	0	1442	1442
4-Apr	7	7:51	300	58.8	58.8	75.2	54.3	99.5	2625	2625
4-Apr	7	7:56	300	71.1	71.1	83.5	61.7	104.3	44576	44576
4-Apr	7	8:01	300	67.7	67.7	79	54.7	101.5	20375	20375
4-Apr	7	8:06	300	56	56	64.2	53.9	0	1378	1378
4-Apr	7	8:11	300	59.5	59.5	77.6	53.7	0	3084	3084
4-Apr	7	8:16	300	55.3	55.3	62.8	52.8	0	1172	1172
4-Apr	7	8:21	300	55.3	55.3	60.5	53.1	0	1172	1172
4-Apr	7	8:26	300	55.4	55.4	66	52.9	0	1200	1200
4-Apr	7	8:31	300	55	55	58.7	52.9	0	1094	1094
4-Apr	7	8:36	300	54.6	54.6	65.3	52.2	0	998	998
4-Apr	7	8:41	300	54.9	54.9	64	52.4	0	1069	1069
4-Apr	7	8:46	300	65.2	65.2	86.3	52.2	97	11458	11458
4-Apr	7	8:51	300	54	54	64.9	51.7	0	869	869
4-Apr	7	8:56	300	53.6	53.6	60.2	51.4	0	793	793
4-Apr	7	9:01	300	53.7	53.7	60.2	50.8	0	811	811
4-Apr	7	9:06	300	53.8	53.8	60.8	51.5	0	830	830
4-Apr	7	9:11	300	54.9	54.9	60.2	52	0	1069	1069
4-Apr	7	9:16	300	55.6	55.6	75.1	52.2	0	1256	1256
4-Apr	7	9:21	300	53.3	53.3	57.3	51.3	0	740	740
4-Apr	7	9:26	300	53.7	53.7	56.6	51.6	0	811	811
4-Apr	7	9:31	300	53.2	53.2	57.6	50.7	0	723	723
4-Apr	7	9:36	300	60.4	60.4	77	51.2	0	3794	3794
4-Apr	7	9:41	300	55.2	55.2	71.8	50.9	101.5	1146	1146
4-Apr	7	9:46	300	58.9	58.9	71.6	50.9	99.5	2686	2686

4-Apr	7	9:51	300	54	54	64.3	50.7	0	869	869
4-Apr	7	9:56	300	51.6	51.6	57.8	49.5	0	500	500
4-Apr	7	10:01	300	52.3	52.3	57.1	49.2	0	588	588
4-Apr	7	10:06	300	53.6	53.6	63.7	50	0	793	793
4-Apr	7	10:11	300	51.6	51.6	57	49.3	0	500	500
4-Apr	7	10:16	300	51.3	51.3	55.5	48.7	0	467	467
4-Apr	7	10:21	300	50.6	50.6	55.7	48	0	397	397
4-Apr	7	10:26	300	51.8	51.8	58	47.2	0	524	524
4-Apr	7	10:31	300	50	50	55	47.6	0	346	346
4-Apr	7	10:36	300	50.6	50.6	56.5	48.4	0	397	397
4-Apr	7	10:41	300	57.4	57.4	83.5	47.7	97	1902	1902
4-Apr	7	10:46	300	52.6	52.6	66.6	48.3	0	630	630
4-Apr	7	10:51	300	50.5	50.5	54.3	48.3	0	388	388
4-Apr	7	10:56	300	50.6	50.6	55	48.2	0	397	397
4-Apr	7	11:01	300	50.9	50.9	62.7	48	0	426	426
4-Apr	7	11:06	300	50.8	50.8	54.9	47.9	0	416	416
4-Apr	7	11:11	300	52.4	52.4	63.3	47.7	0	601	601
4-Apr	7	11:16	300	56.4	56.4	69.1	51.7	0	1510	1510
4-Apr	7	11:21	300	57.7	57.7	69.5	52	97	2038	2038
4-Apr	7	11:26	300	64.2	64.2	79.1	48.1	105.5	9101	9101
4-Apr	7	11:31	300	53.5	53.5	63.2	48.9	97	775	775
4-Apr	7	11:36	300	51.4	51.4	60.2	48.8	99.5	478	478
4-Apr	7	11:41	300	51.8	51.8	59.5	48.9	0	524	524
4-Apr	7	11:46	300	51.7	51.7	57.5	49.5	97	512	512
4-Apr	7	11:51	300	52.1	52.1	55.3	49.7	0	561	561
4-Apr	7	11:56	300	53.1	53.1	59.3	50.2	0	706	706
4-Apr	7	12:01	300	52.8	52.8	61.1	50.5	0	659	659
4-Apr	7	12:06	300	59.9	59.9	76.5	51.2	97	3381	3381
4-Apr	7	12:11	300	62.6	62.6	82.6	50.2	99.5	6297	6297
4-Apr	7	12:16	300	56.4	56.4	75	49.5	109	1510	1510
4-Apr	7	12:21	300	54.3	54.3	68.1	50.1	0	931	931
4-Apr	7	12:26	300	53.3	53.3	69.9	49	0	740	740
4-Apr	7	12:31	300	55.6	55.6	72	50.6	0	1256	1256
4-Apr	7	12:36	300	54.4	54.4	65.1	50.3	97	953	953
4-Apr	7	12:41	300	53.5	53.5	63.8	49.9	97	775	775
4-Apr	7	12:46	278.5	53.9	53.9	71.4	50.2	99.5	849	849

2319150 15029928

289 # of Data Points
63.7 Leq (24 Hour)
71.8 Ldn
46.4 Lmin
100.1 Lmax