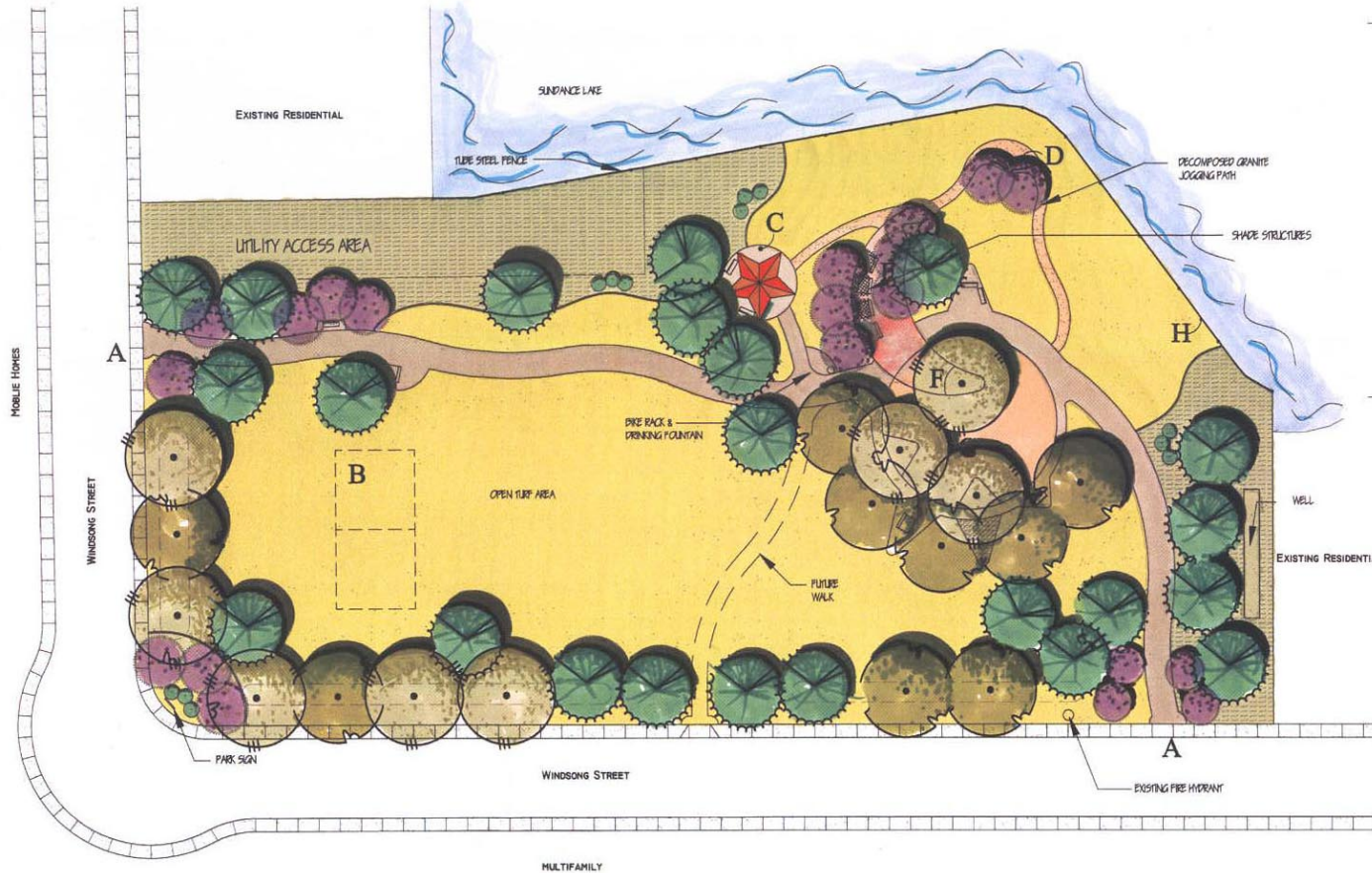


# Sundance Park Master Plan

## Preliminary Master Plan (2 Acres)



### PARK ELEMENT ZONES

- A. MAIN ENTRANCES
- B. VOLLEBALL COURT
- C. SEATING ENCLAVE
- D. LAKESIDE OVERLOOK
- E. SMALL GROUP PICNIC AREA W/ SHADE STRUCTURES
- F. SAND BOX
- G. TOT-LOT
- H. TUBE STEEL FENCE

### PLANTING LEGEND

- TURF
- Ground Cover
- Shrub
- Flowering Accent Tree
- Evergreen Tree
- Broadleaf Evergreen Tree
- Deciduous Tree

