

DIST	COUNTY	ROUTE	KP (PM) TOTAL PROJECT	SHEET No	TOTAL SHEETS
03	SAC/YOL	0275	20.94 (13.01)		


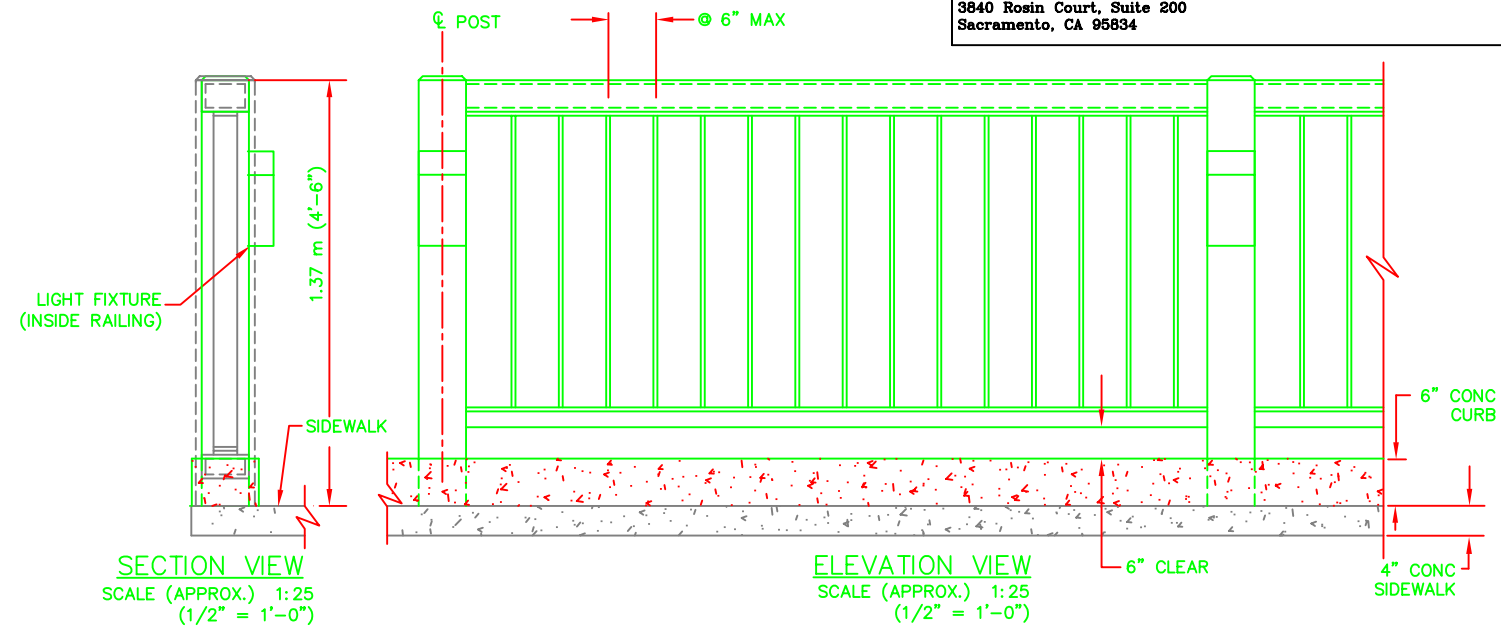
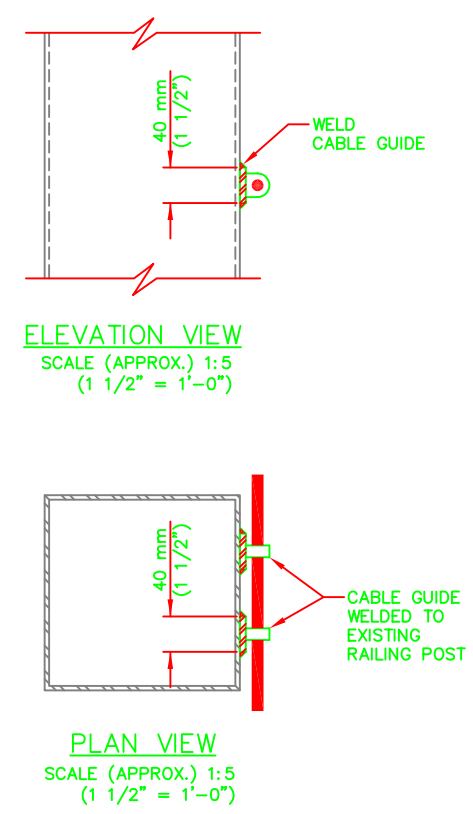
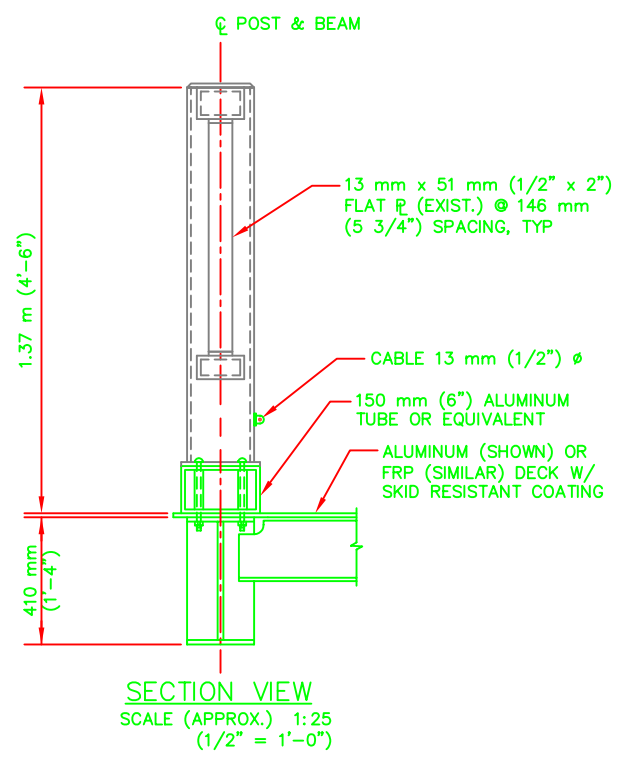
REGISTERED CIVIL ENGINEER

PLANS APPROVAL DATE

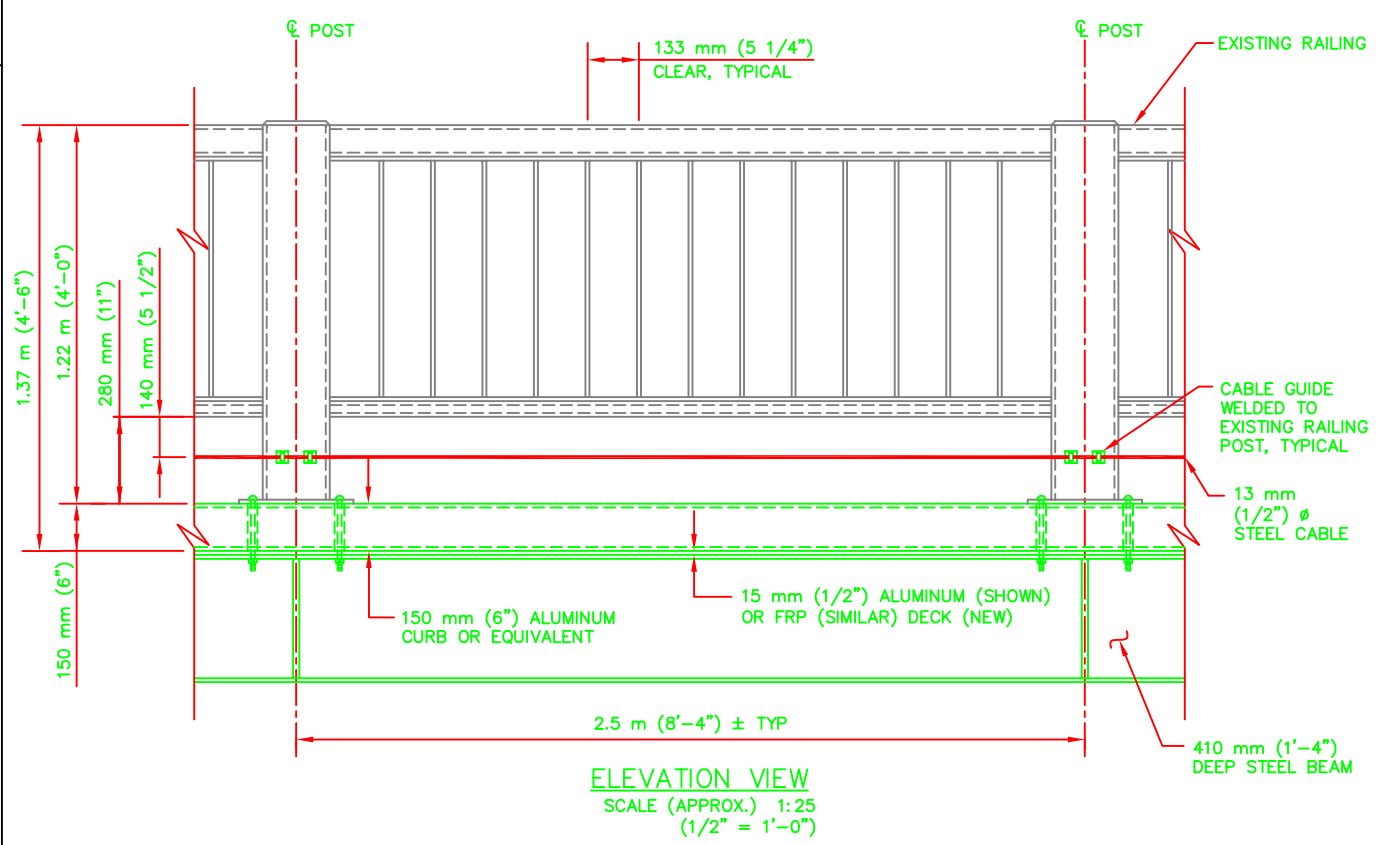
The State of California or its officers or agents shall not be responsible for the accuracy or completeness of electronic copies of this plan sheet.

City of Sacramento Department of Transportation
927 10th Street, Suite 300
Sacramento, CA 95814

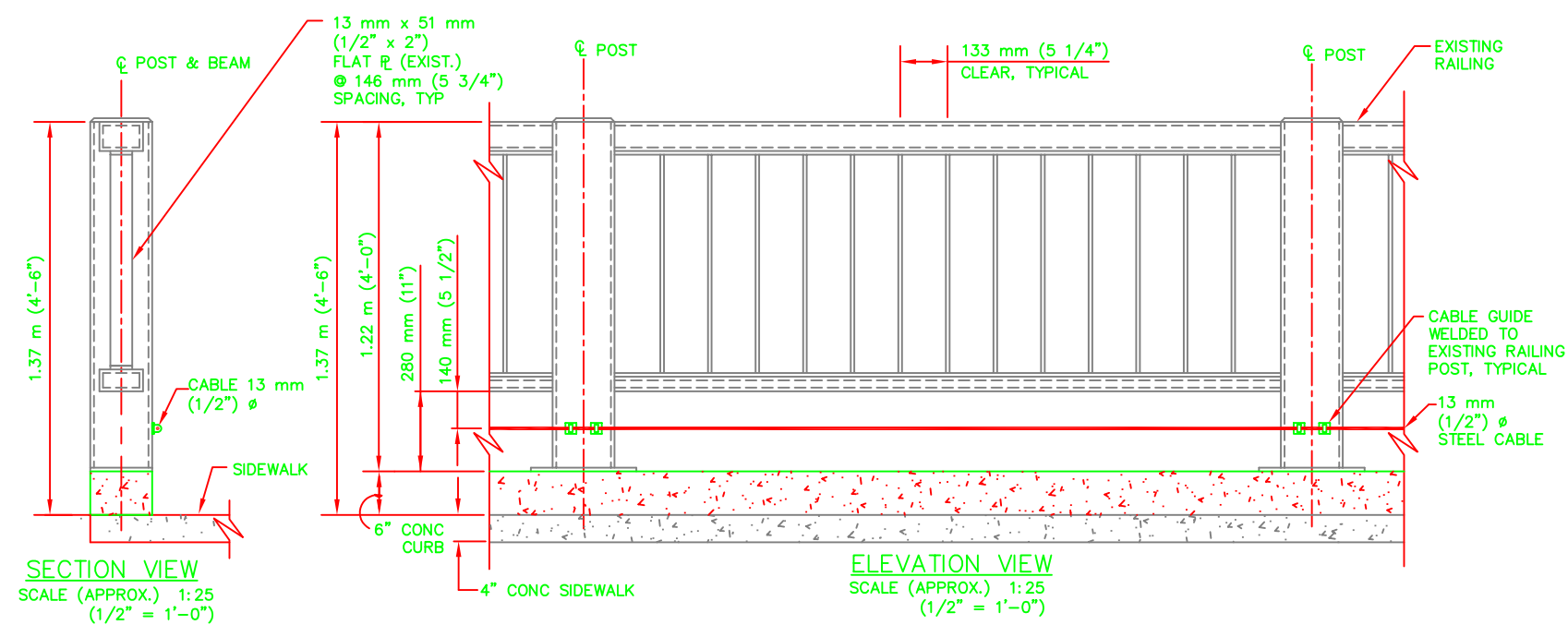
Parsons Brinckerhoff Quade & Douglas, Inc.
3840 Rosin Court, Suite 200
Sacramento, CA 95834

APPROACH SPAN TYPICAL RAILING



LIFT SPAN TYPICAL RAILING



FIXED TRUSS SPANS TYPICAL RAILING

DUAL UNITS IN MILLIMETER (INCHES) UNLESS OTHERWISE SHOWN.
APPROXIMATE METRIC EQUIVALENT DIMENSIONS ARE SHOWN.

Project report figures-final2-3-4-05-RAILING_WELDED_metric.dwg

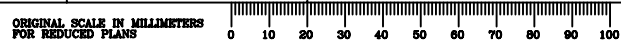
DESIGN OVERSIGHT	
SIGN OFF DATE	
DESIGN DETAIL SHEET (METRIC) (REV. 3/1/98)	

DESIGN	BY A Wahidi	CHECKED R Cermak
DETAILS	BY K King	CHECKED
QUANTITIES	BY	CHECKED

PREPARED FOR THE
STATE OF CALIFORNIA
DEPARTMENT OF TRANSPORTATION

Farid Nobari
PROJECT ENGINEER

BRIDGE NO.	22-0021	TOWER BRIDGE PEDESTRIAN/BICYCLE IMPROVEMENTS PROJECT
KP (PM)	20.94 (13.01)	
FIGURE 4		



CU 03
EA OC9700

DISREGARD PRINTS BEARING EARLIER REVISION DATES	REVISION DATES (PRELIMINARY STAGE ONLY)	SHEET	OF
	06/28/04 02/04/05 02/21/06 03/04/06		

FILE => \$REQUEST

TIME PLOTTED => \$TIME
DATE PLOTTED => \$DATE
USERNAME => \$USER