

DIST	COUNTY	ROUTE	KP (PM) TOTAL PROJECT	SHEET No	TOTAL SHEETS
03	SAC/YOL	0275	20.94 (13.01)		

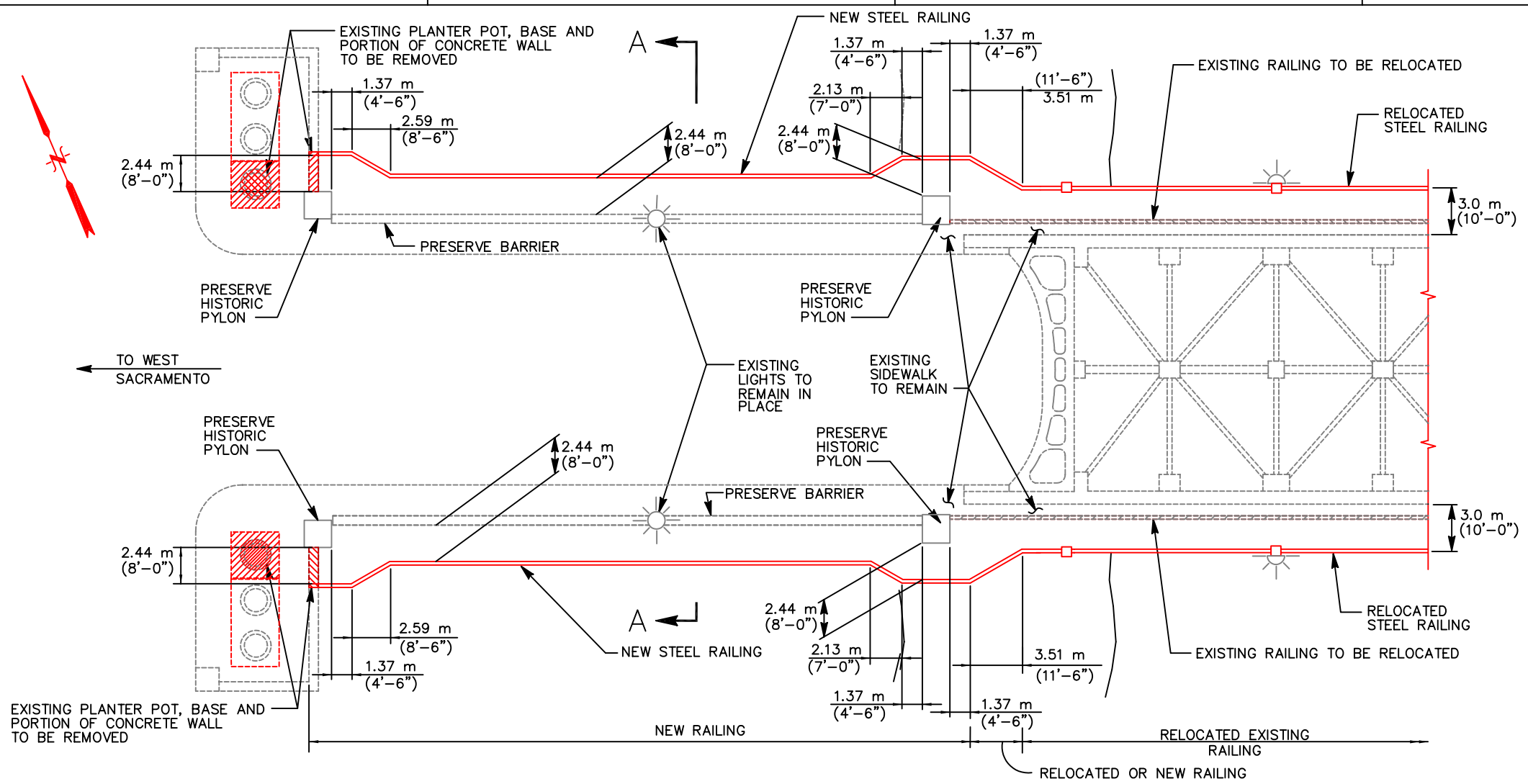
REGISTERED CIVIL ENGINEER

PLANS APPROVAL DATE

The State of California or its officers or agents shall not be responsible for the accuracy or completeness of electronic copies of this plan sheet.

City of Sacramento Department of Transportation
927 10th Street, Suite 300
Sacramento, CA 95814

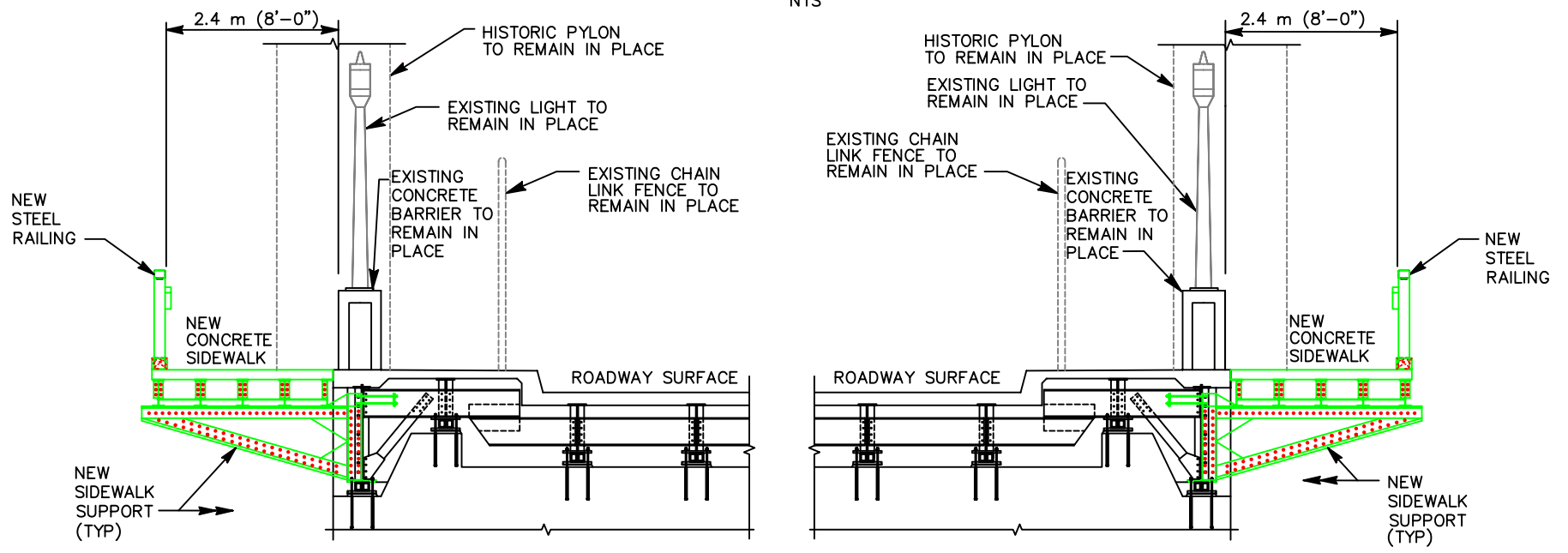
Parsons Brinckerhoff Quade & Douglas, Inc.
3840 Rosin Court, Suite 200
Sacramento, CA 95834



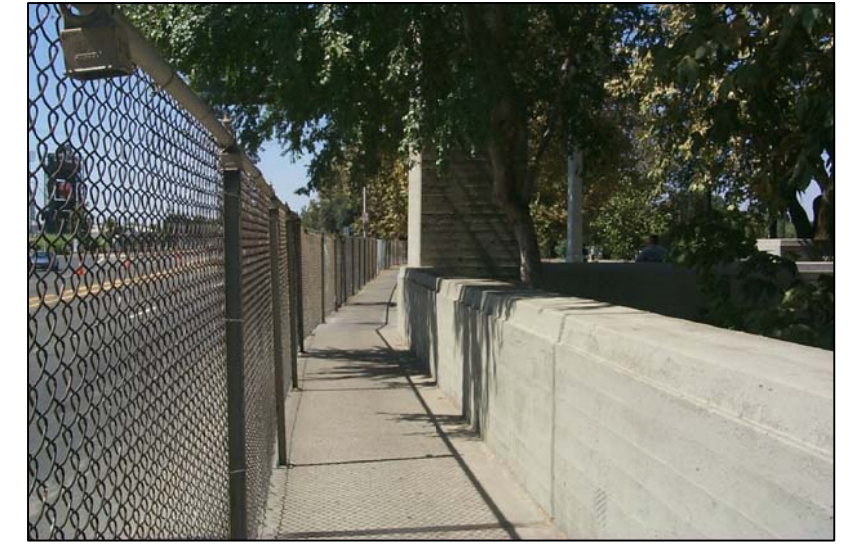
PLAN VIEW - WESTERN APPROACH SPANS
NTS



SOUTHWEST APPROACH FACING EAST



SECTION A-A - WESTERN APPROACH SPANS
NTS



NORTHWEST SIDEWALK FACING WEST

DUAL UNITS IN MILLIMETER (INCHES) UNLESS OTHERWISE SHOWN.
APPROXIMATE METRIC EQUIVALENT DIMENSIONS ARE SHOWN.

DESIGN OVERSIGHT

SIGN OFF DATE

DESIGN DETAIL SHEET (METRIC) (REV. 3/1/98)

DESIGN	BY A Wahidi	CHECKED R Cermak
DETAILS	BY K King	CHECKED
QUANTITIES	BY	CHECKED

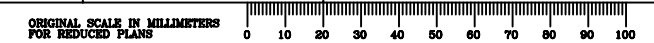
PREPARED FOR THE
STATE OF CALIFORNIA
DEPARTMENT OF TRANSPORTATION

Farid Nobari
PROJECT ENGINEER

BRIDGE NO.	22-0021
KP (PM)	20.94 (13.01)

TOWER BRIDGE PEDESTRIAN/BICYCLE IMPROVEMENTS PROJECT

FIGURE 5



CU 03
EA OC9700
FILE => \$REQUEST

DISREGARD PRINTS BEARING
EARLIER REVISION DATES

REVISION DATES (PRELIMINARY STAGE ONLY)					
06/28/04	06/28/04	06/28/04	06/28/04	06/28/04	06/28/04

SHEET OF

Project report figures-final2-3-4-05\westend_nogop_metric.dwg

USER => \$USER DATE PLOTTED => \$DATE TIME PLOTTED => \$TIME