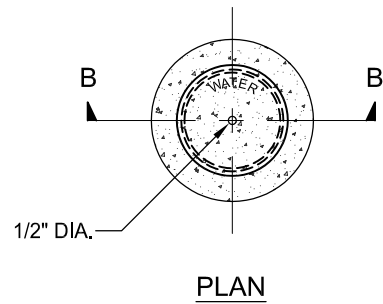
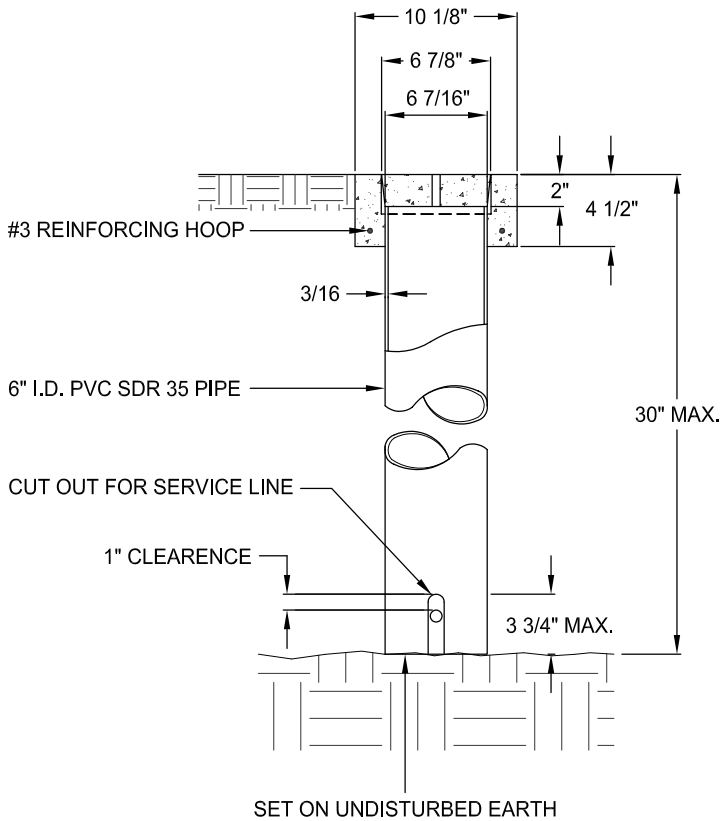


NOTES:

1. BOX FLANGE IS NOT TO BE SET IN CONCRETE WHERE STREET SURFACE IS ASPHALT
2. THE CAST IRON WATER SERVICE BOX SHALL BE INSTALLED IN ALL PAVED SURFACES

**CURB STOP BOX
TRAFFIC INSTALLATION**



SECTION B-B

**CURB STOP BOX
NON-TRAFFIC INSTALLATION**

REV.	DATE	DESCRIPTION
1		

APPR'D BY: *DOB* NO SCALE
 DATE: MAY 2007 DWG. NO. **W - 305**