

**SAMPLE ON SITE PLAN #1**  
**TITLE SHEET**

# Improvement Plans For 1234 ALPHA STREET

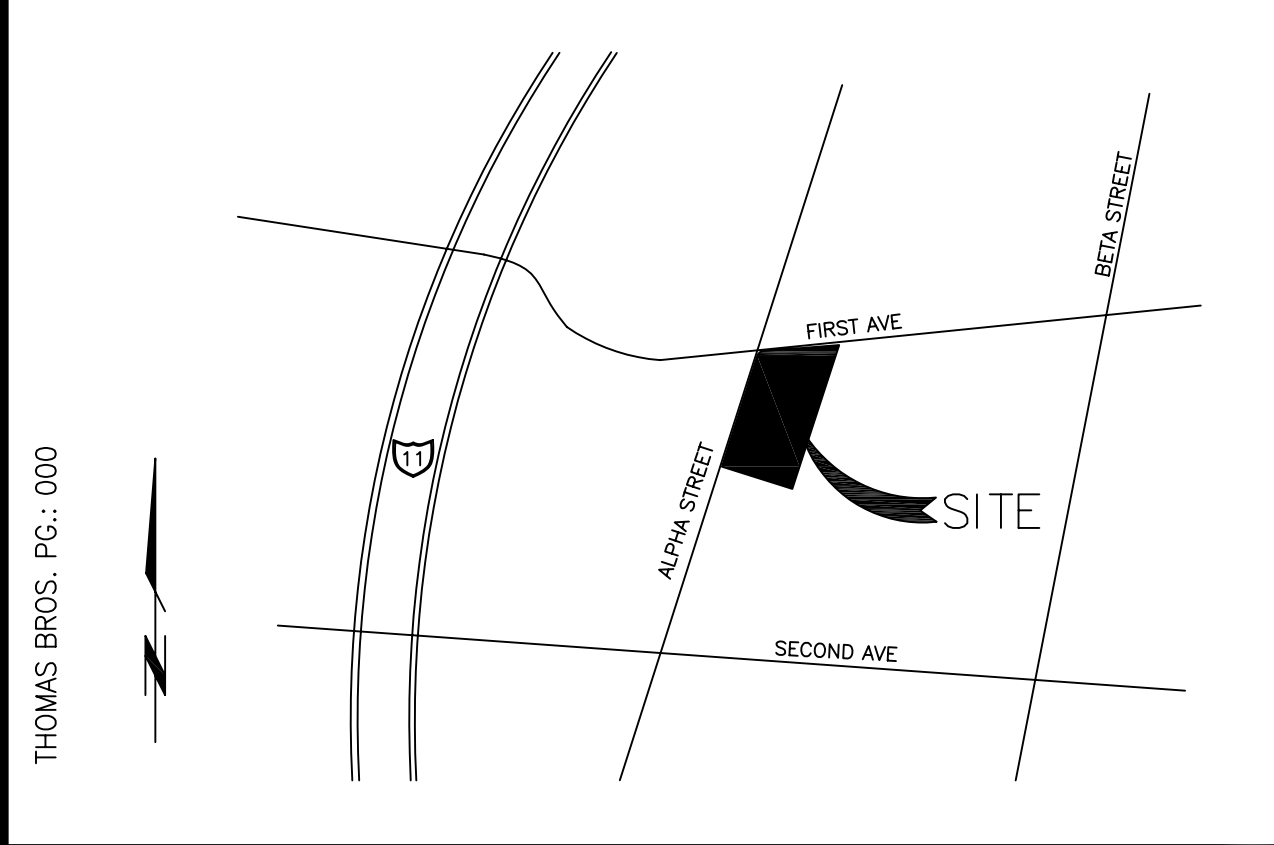
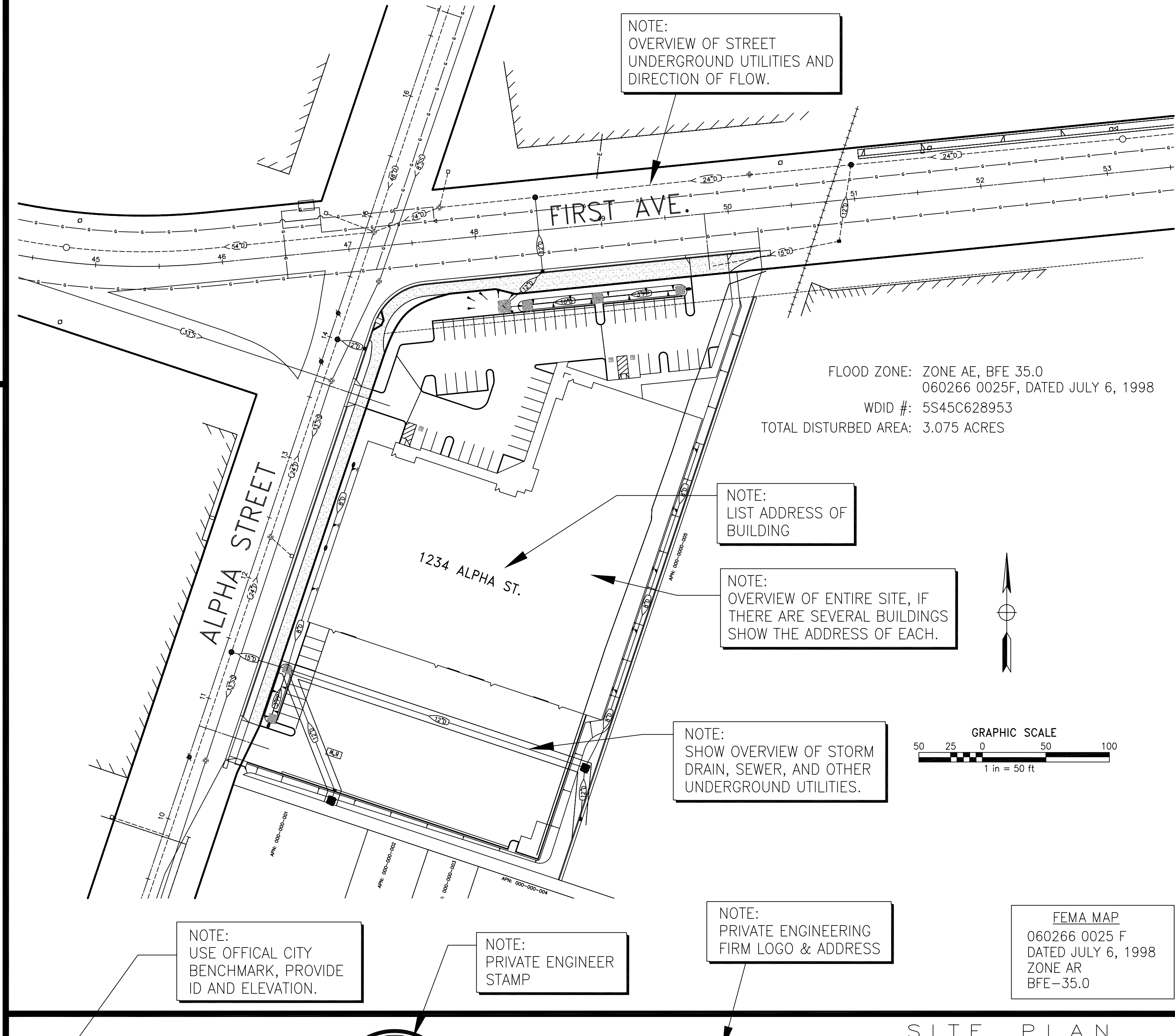
City of Sacramento, California

**ABBREVIATIONS**

AB	AGGREGATE BASE	L	LENGTH
AC	ASPHALTIC CONCRETE OR ACRE	LIP	EDGE OF GUTTER PAN
BC	BEGIN HORIZONTAL CURVE	MAX	MAXIMUM
BLDG	BUILDING	MH	MANHOLE
BM	BENCH MARK	MIN	MINIMUM
BW	BOTTOM OF WALL	OH	OVERHEAD
CONC	CONCRETE	PB	PULL BOX
CL, ~C	CENTERLINE	PI	POINT OF INTERSECTION
CO	CLEANOUT OR COUNTY	PL, ~P	PROPERTY LINE
CONST	CONSTRUCT	PP	POWER POLE
COTG	CLEANOUT TO GRADE	PRC	POINT OF REVERSE CURVE
CR	CURB RETURN	PT	POINT OF TANGENCY
~D	DELTA	PVMT	PAVEMENT
D	STORM DRAIN	R	RADIUS OR RIDGE
DI	DRAIN INLET	RAD	RADIAL
DIA, Ø	DIAMETER	R/W	RIGHT OF WAY
DMH	STORM DRAIN MANHOLE	S	SLOPE OR SEWER
DWG	DRAWING	SD	STORM DRAIN
DWY	DRIVEWAY	SMH	SEWER MANHOLE
(E), EXIST	EXISTING	SS	SANITARY SEWER
EC	END HORIZONTAL CURVE	STA	STATION
EP	EDGE OF PAVEMENT	SW	SIDEWALK
ESMT	EASEMENT	TB	TOP OF BANK
FL, ~F	FLOWLINE	TC	TOP OF CURB
G	GAS	TEL	TELEPHONE
GB	GRADE BREAK	TEMP	TEMPORARY
GFL, G~F	GUTTER FLOWLINE	TP	TELEPHONE POLE
GR	INLET GRATE	TS	TRAFFIC SIGNAL
HGL	HYDRAULIC GRADE LINE	TW	TOP OF WALL
INTX	INTERSECTION	TYP	TYPICAL
INV	PIPE INVERT	UG	UNDERGROUND
IRR	IRRIGATION	W	WATER

**LEGEND**

EXISTING	PROPOSED	DESCRIPTION
○	●	DRAIN MANHOLE
□	■	SEWER MANHOLE
○	■	CATCH BASIN
—○—	—●—	CLEAN OUT
—8"S—	—8"D—	SEWER LINE AND SIZE
—8"D—	—8"D—	DRAIN LINE AND SIZE
—6"W—	—6"W—	WATER LINE AND SIZE
—○—	—○—	WATER METER
—○—	—○—	WATER VALVE
—○—	—○—	FIRE HYDRANT
—○—	—○—	DETECTOR CHECK VALVE
—○—	—○—	AIR RELEASE VALVE
—○—	—○—	BLOW-OFF
—SMUD—	—SMUD—	SMUD (UNDERGROUND)
—G—T—TV—	—G—T—TV—	GAS, TELE, OR CABLE TV
—	—	PROPERTY LINE
⊙	⊙	MONUMENT
⊙	⊙	STREET LIGHT
⊙	⊙	STREET SIGN
#	#	STREET SIGN
—	—	HANDICAP RAMP
—X—	—X—	FENCE
31	31.29	SPOT ELEVATION
160	160	CONTOUR LINE
○	○	TREE TO BE REMOVED
○	○	TREE TO REMAIN
—	—	SLOPE BANK
—	—	FLOW LINE
—	—	EDGE OF PAVEMENT
—	—	CURB & GUTTER
—	—	SIDEWALK
—	—	RIGHT OF WAY
—	—	CENTER LINE



**SHEET INDEX**

1	COVER SHEET
2	GENERAL NOTES AND DETAILS
3	EXISTING TOPOGRAPHY
4	DEMOLITION
5	GRADING PLAN
6	DRAINAGE AND SEWER PLAN
7	UTILITY PLAN
8	TYPICAL SECTIONS AND DETAILS
9	EROSION AND SEDIMENT CONTROL PLAN

NOTE: VERIFY AND PROVIDE CORRECT NAMES AND NUMBERS OF REPRESENTATIVES

APN: 000-000-000

**UTILITY REPRESENTATIVES**

UTILITY	REPRESENTATIVE(S)	PHONE
USA		1-800-612-2444
GAS	PACIFIC GAS & ELECTRIC	386-5013
ELECTRICITY	SMUD	372-5767
TELEPHONE	PACIFIC BELL	453-7128
WATER	CITY OF SACRAMENTO	808-8891
SEWER	CITY OF SACRAMENTO	808-8891
DRAINAGE	CITY OF SACRAMENTO	808-8891
FIRE	CITY OF SACRAMENTO	264-5936
CABLE TV	COMCAST	648-8380

**SITE PLAN**

FEMA MAP  
060266 0025 F  
DATED JULY 6, 1998  
ZONE AR  
BFE-35.0

X:\PROJ\990049\DWG\99049C01.DWG 05-31-01 1:32 pm - ituna

REVISIONS			
NO.	DESCRIPTION	APPD.	DATE

SCALE:	
HORIZ.	1" = 50'
VERT.	1" = N/A

BENCH MARK	BM 297-E1A
ELEV	24.041
Hit nail in traffic light base at NW corner of Dos Rios Street and Richards Boulevard (1992)	

COMPUTED	
DESIGNED	RST
DRAWN	
PROJ. ENGR.	NAJ



**ENGINEER IT, INC.**  
SURVEYING \* PLANNING \* ENGINEERING  
1234 ROAD ONE, SUITE 10, SACRAMENTO, CA 95820  
PHONE: 916 555-5555 FAX: 916 555-5554  
EMAIL: ENGIT@ENGIT.COM

Improvement Plans for  
**1234 ALPHA STREET**  
COVER SHEET  
City of Sacramento, California

DATE	August 2000
SHEET	1
OF	9

On Site  
1234 ALPHA STREET