

Quality of Life



Coffee Shops



Parks

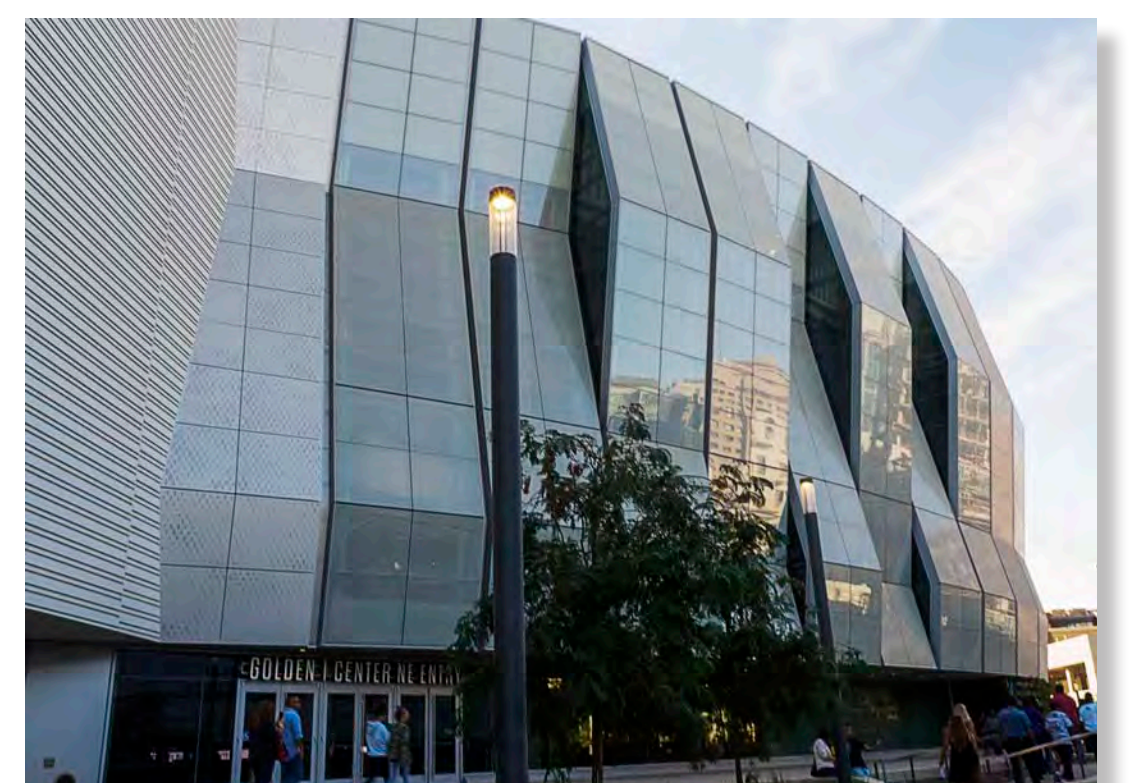


Art & Museums

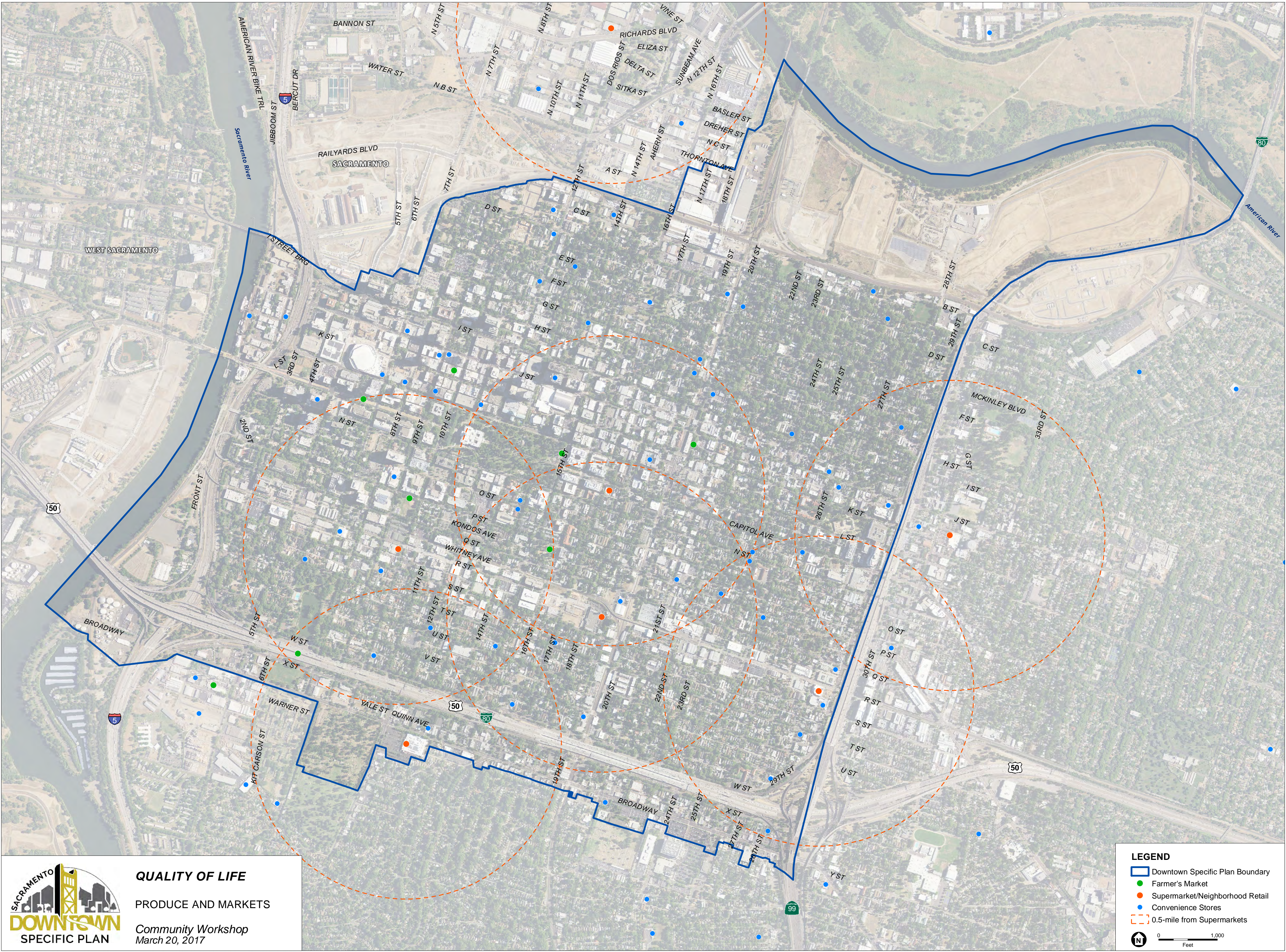
Initiatives:

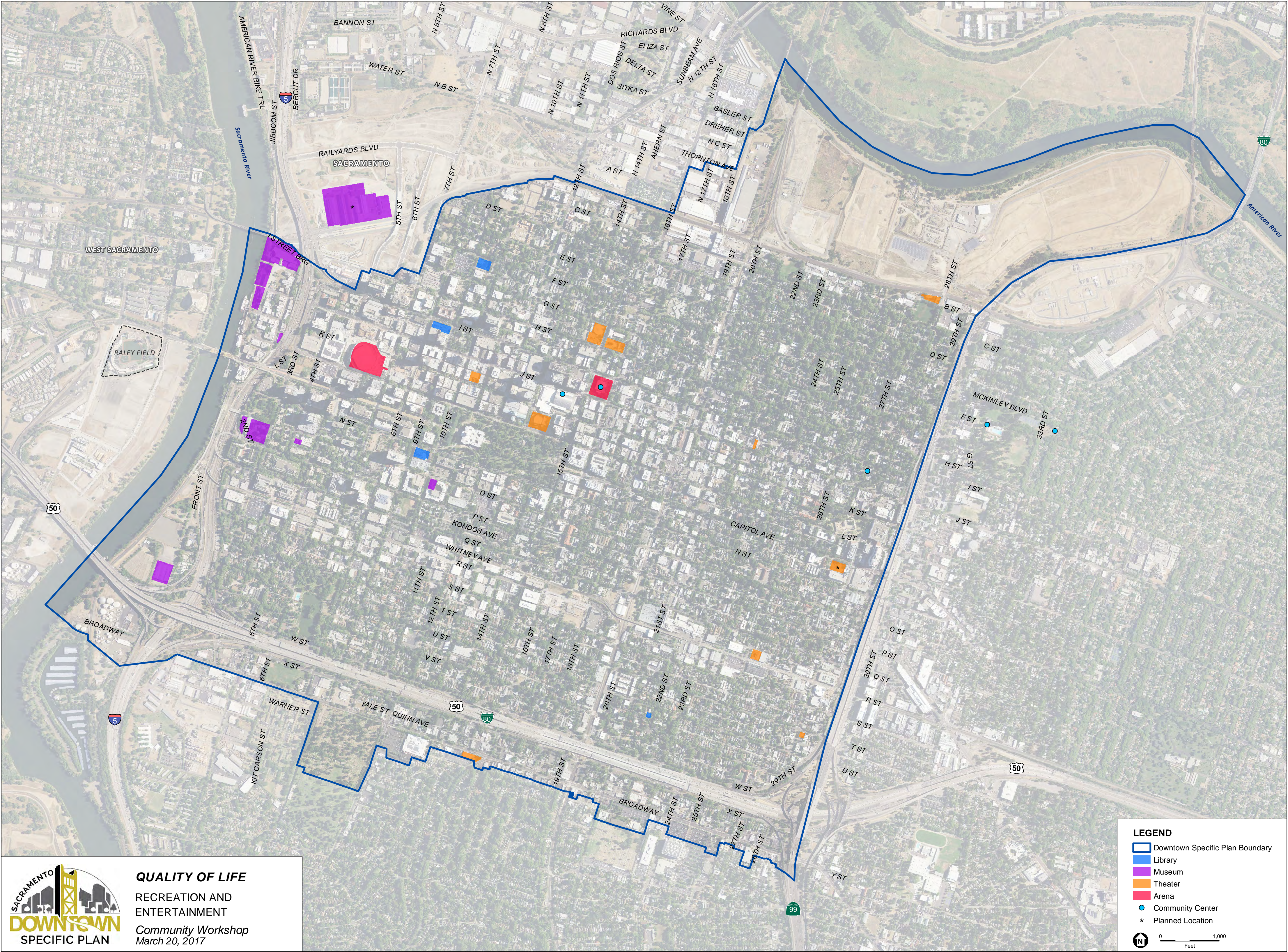
- Identify amenities that improve quality of life, attract visitors and increase demand for housing.
- Improve lighting and incorporate Crime Prevention through Environmental Design (CPTED) to promote public safety
- Improve coordination with schools and strategic investment in parks to improve education, recreation and open space opportunities.
- Develop affordable housing, increase housing supply, and encourage alternative housing types to reduce gentrification and displacement.
- Promote arts and culture with specific art locations in Central Business District and along the streetcar.

Bike Trail



Entertainment Venues





QUALITY OF LIFE

RECREATION AND
ENTERTAINMENT

Community Workshop
March 20, 2017

LEGEND

- Downtown Specific Plan Boundary
- Library
- Museum
- Theater
- Arena
- Community Center
- Planned Location

0 1,000 Feet

Park Activation & Amenities



***Where would you
like to see
park activation or
additional
park amenities?***



QUALITY OF LIFE
SCHOOLS, PARKS, AND
OPEN SPACE
Community Workshop
March 20, 2017

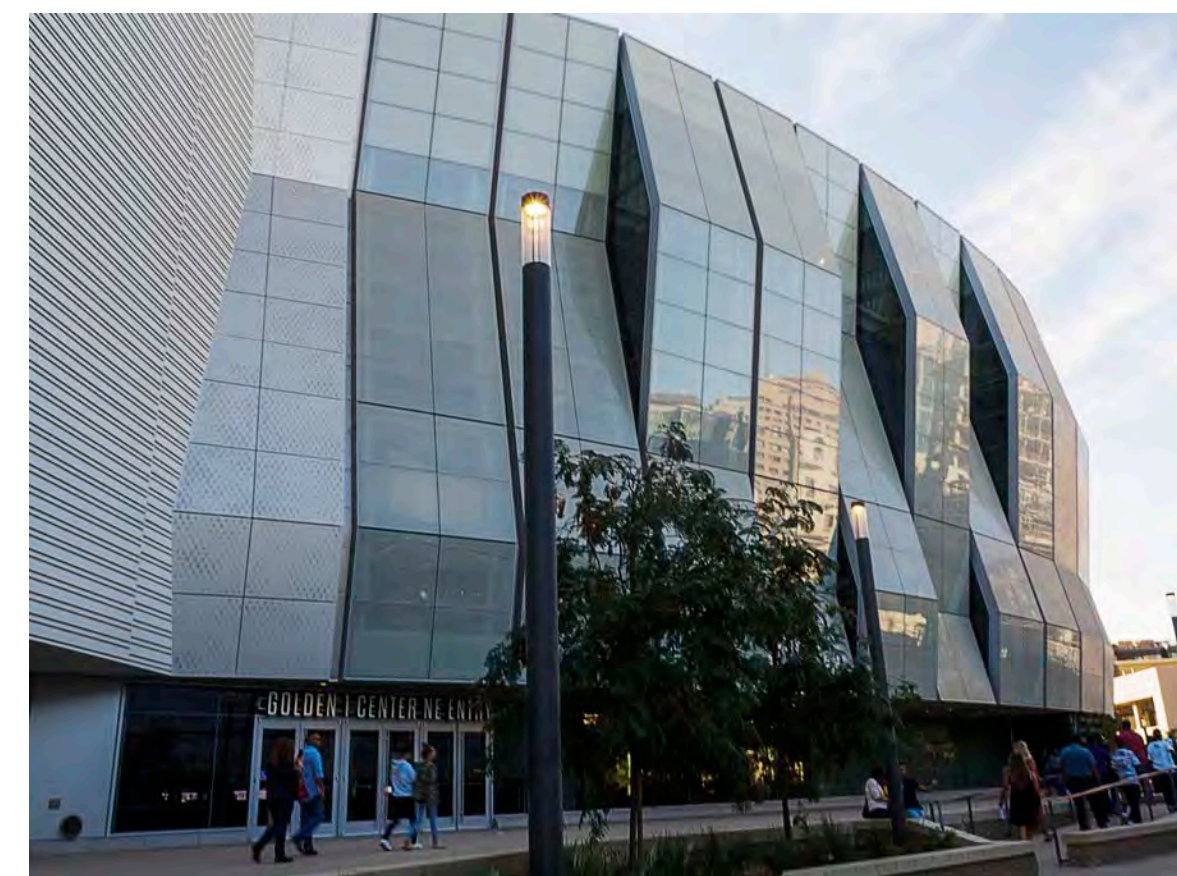
LEGEND

- Downtown Specific Plan Boundary
- Public School
- Private School
- Parks and Open Space
- Parks - School Grounds

0 1,000 Feet

Community Conversation

What are your favorite existing amenities in Downtown?



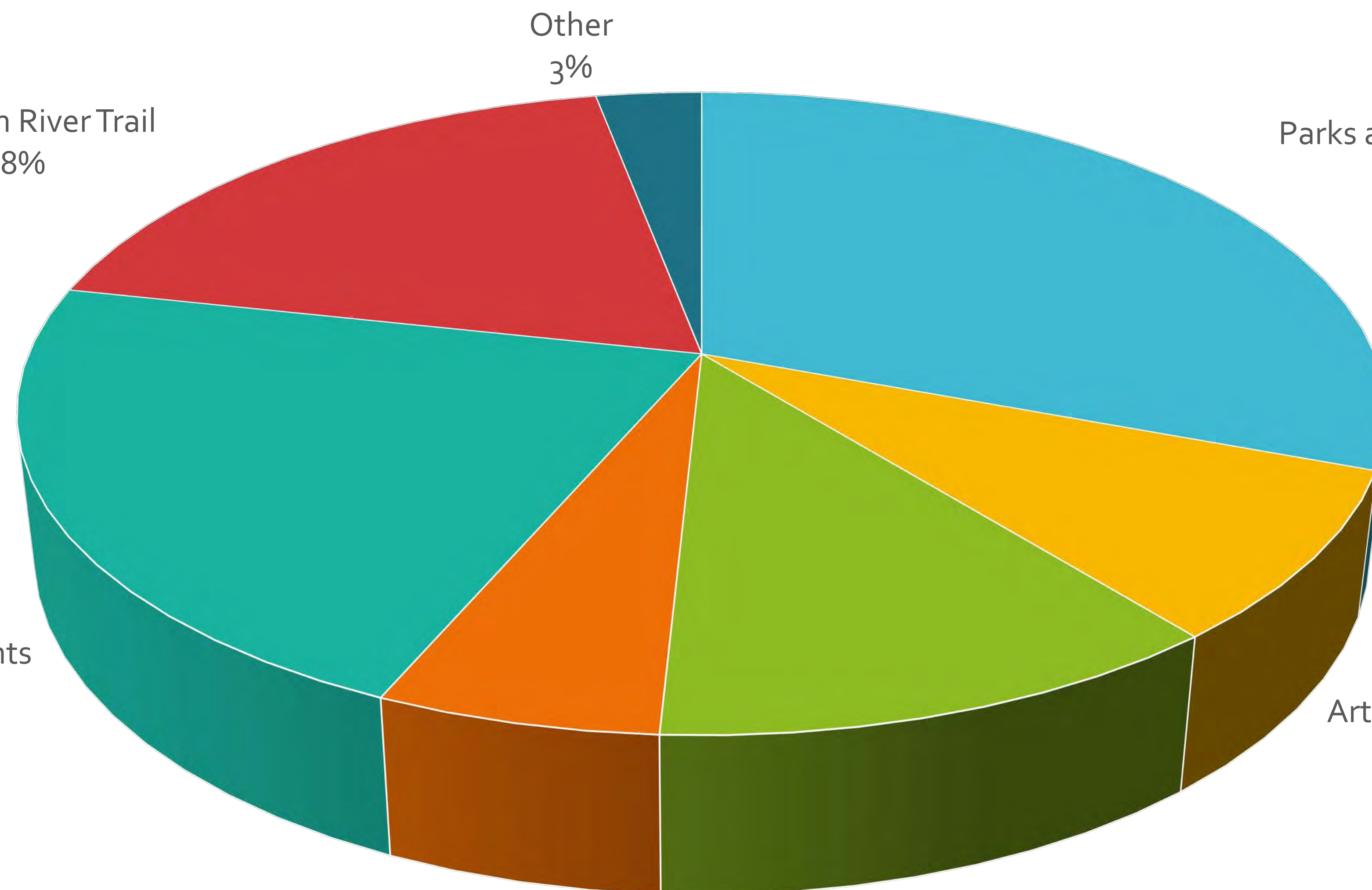
American River Trail
18%



Restaurants
22%

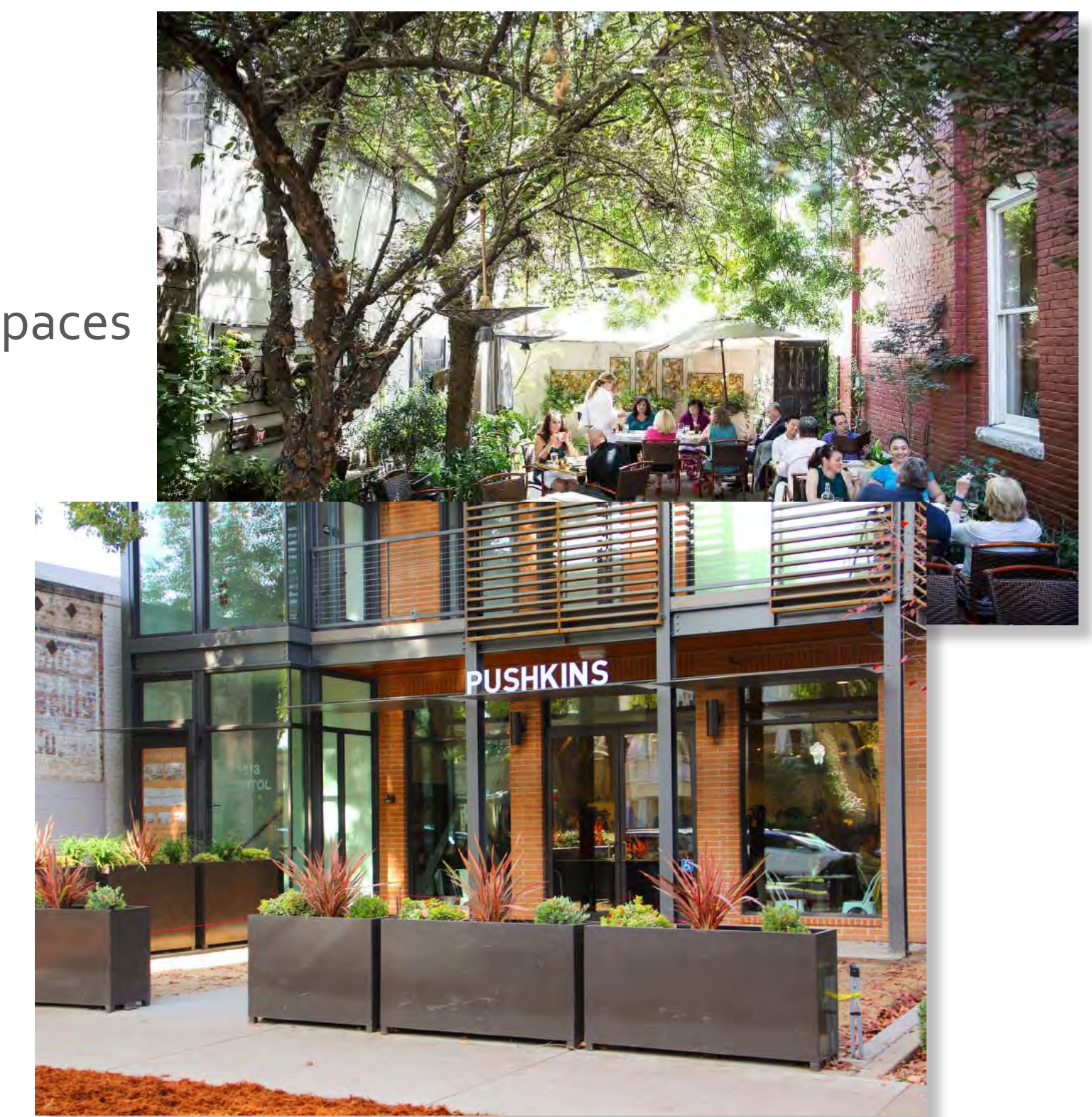


Museums
6%

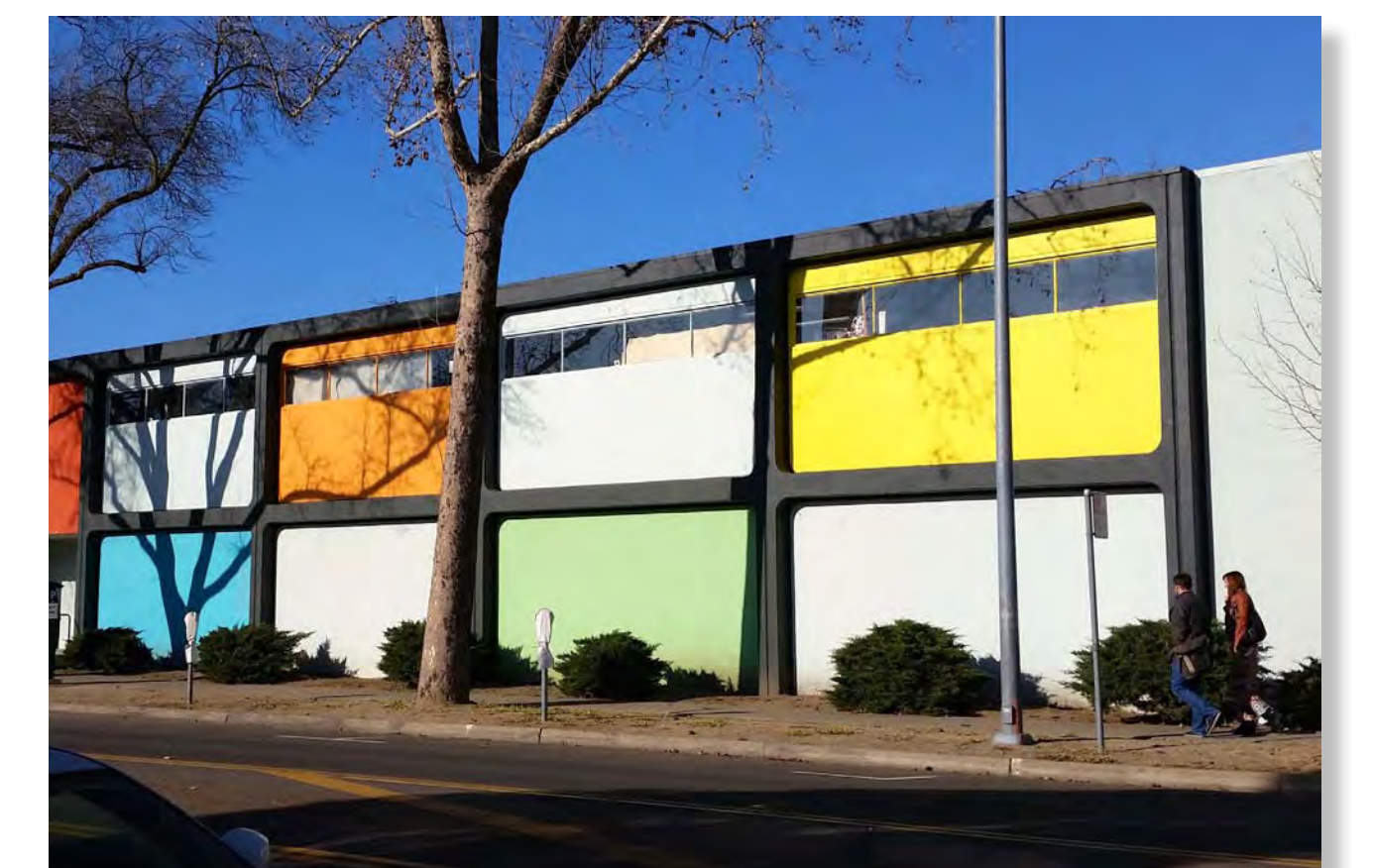


Entertainment Venues
12%

Parks and Open Spaces
31%

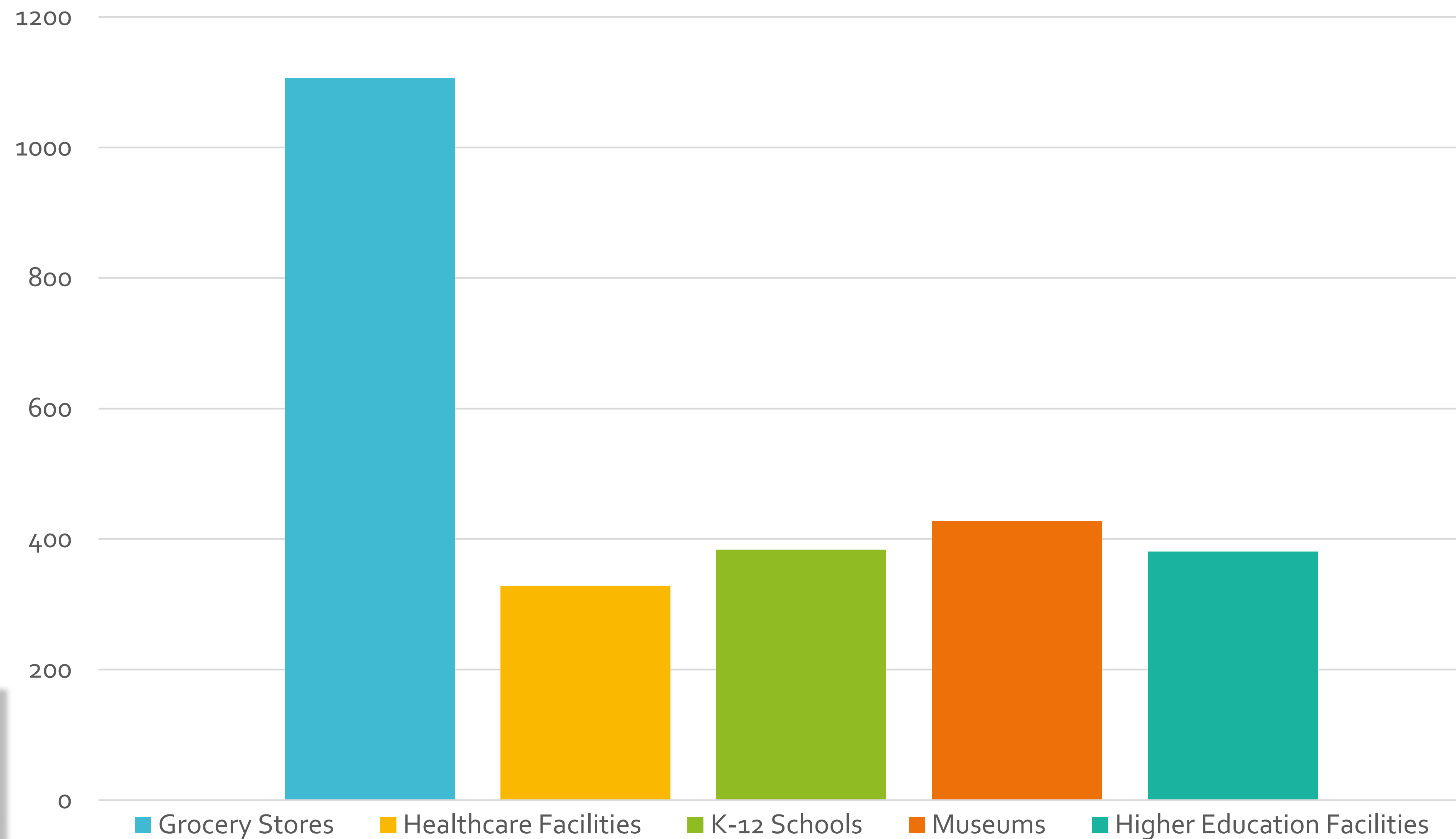


Art Galleries
8%



Community Conversation

What amenities would you like to see Downtown?



Community Conversation

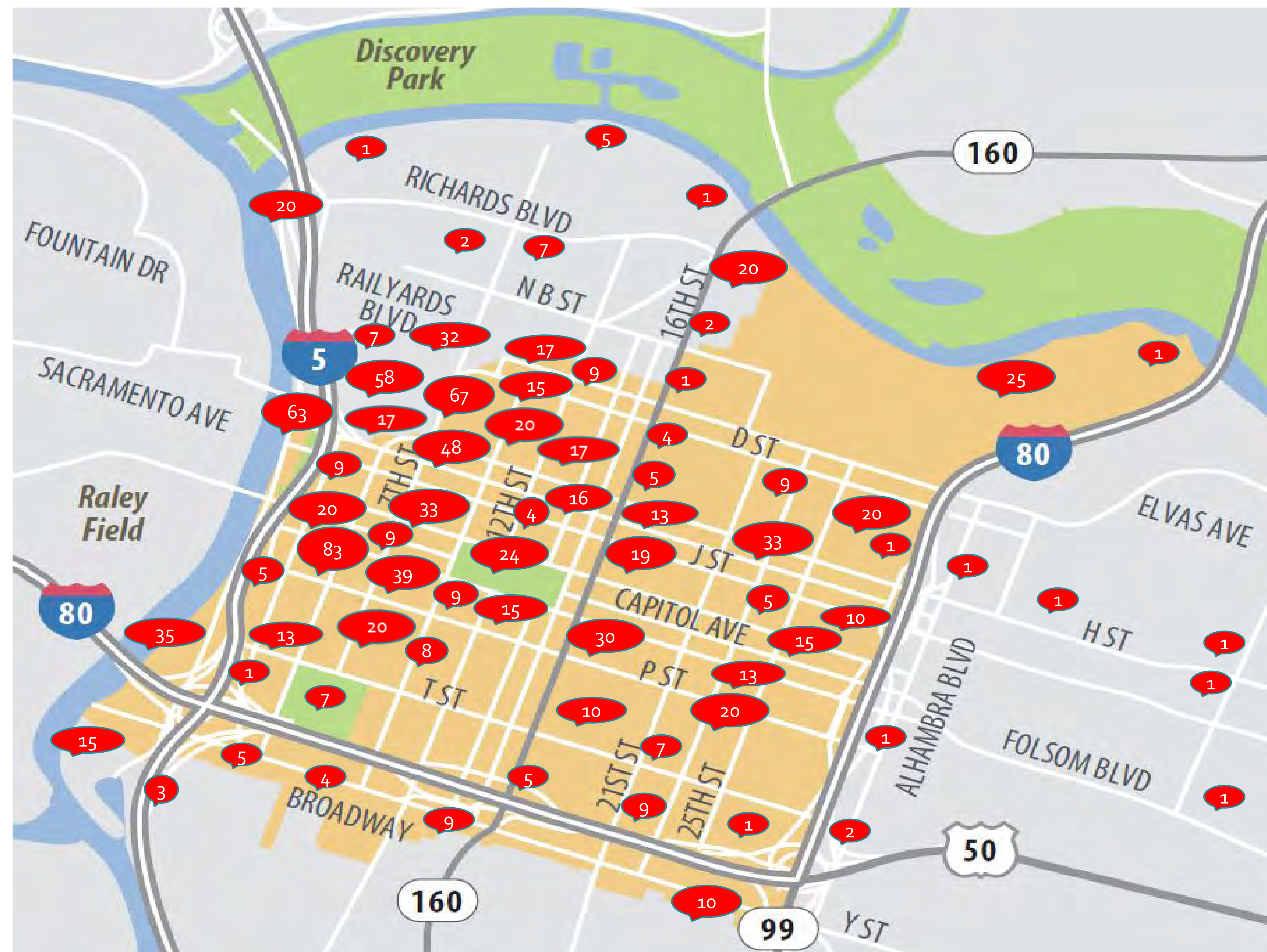
Where are there opportunities for amenities Downtown?

Safe bike parking

Better lighting

Multi-cultural
museum

Dog parks



Aquarium

Grocery stores

Art installations

Each red pin shows the number of respondents that dropped a pin in that area.

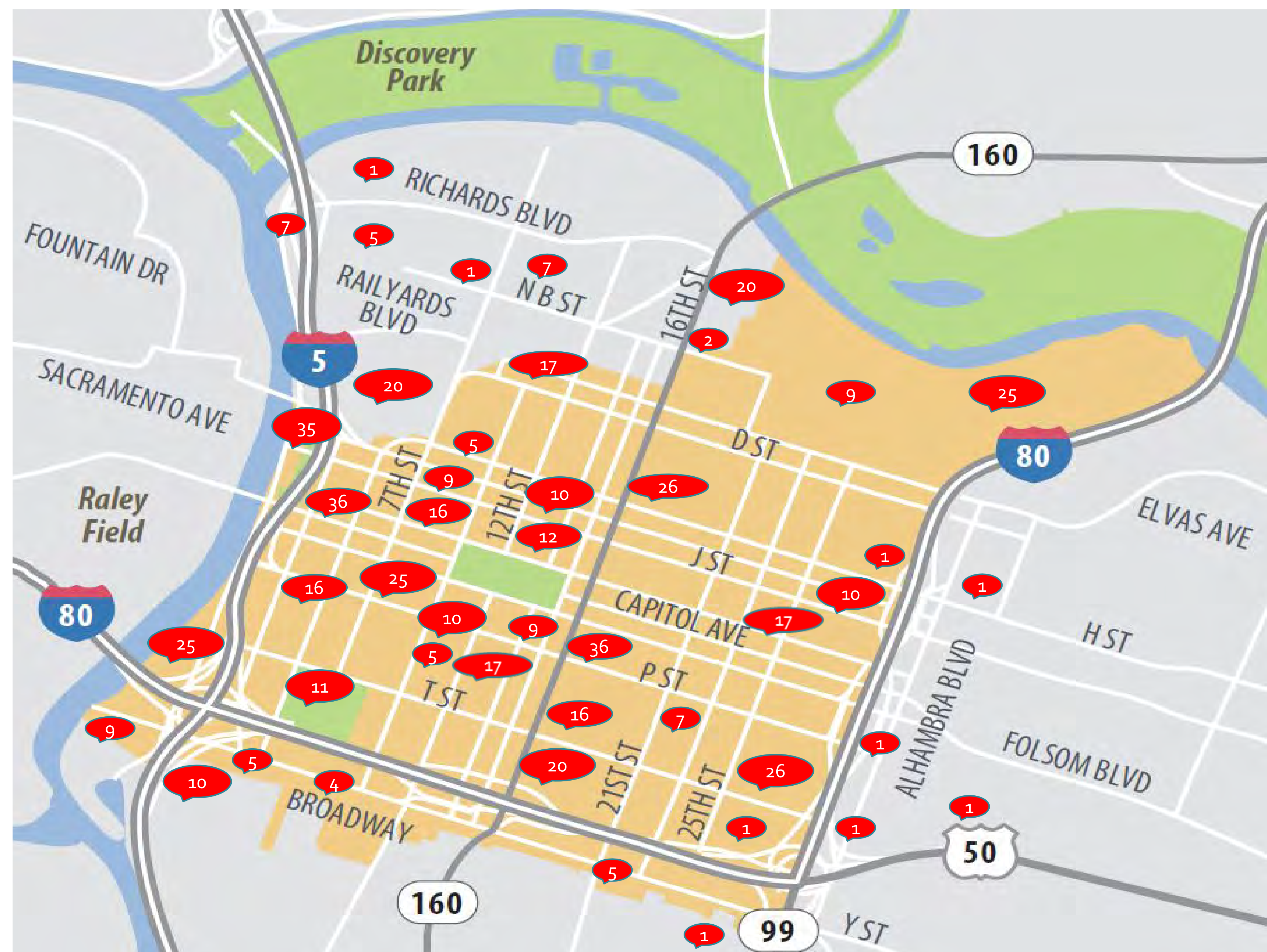
Community Conversation

What are some opportunities for great public spaces?

16th & S Streets:
Need a community garden

Chinatown:
So much potential!

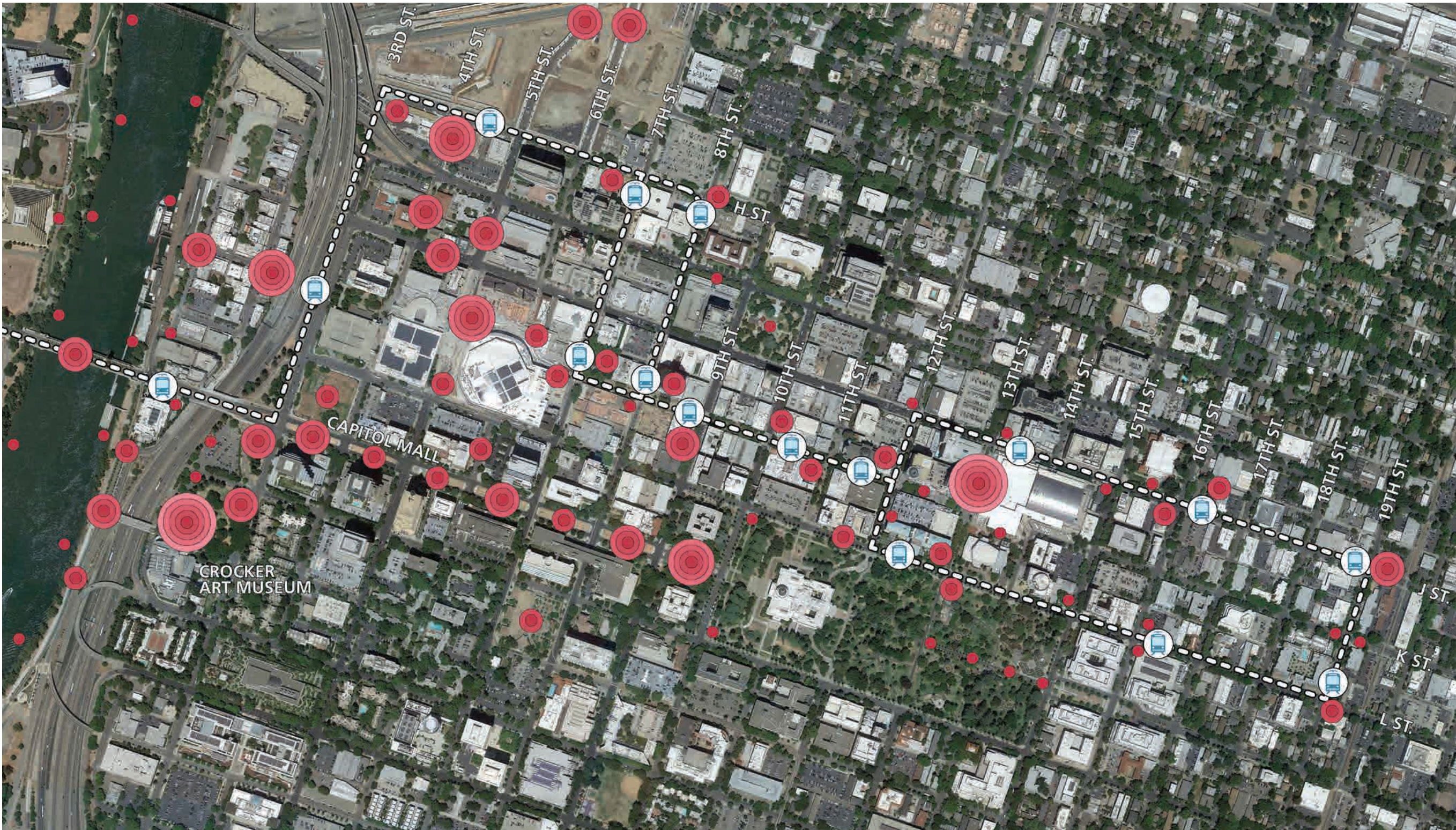
Broadway:
Needs a facelift



R Street Corridor:
Need parklets

Southside Park:
Paddleboarding!

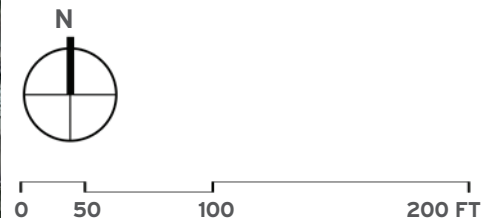
Each red pin shows the number of respondents that dropped a pin in that area.



KEY

- Streetcar Route
- Streetcar Station
- Point of Interest: Public Art (Adjusted for Significance)

NOTES:



PUBLIC ART TYPES

| | | | | | | | | | | | |
|--------------------|--------------------|---------|-------------|------------------|-------------|---------------|--------------|------------|----------------|------------------|-----------------|
| | | | | | | | | | | | |
| 1 Aerial Sculpture | 2 Ground Sculpture | 3 Light | 4 Landscape | 5 Infrastructure | 6 Temporary | 7 Performance | 8 Playground | 9 Literary | 10 Inhabitable | 11 Water Feature | 12 Architecture |

How do we avoid displacement of existing residents and businesses?