

2.2.16 Cathedral Square Historic District

Ordinance # 85-076
July 30, 1985

SACRAMENTO REGISTER OF HISTORIC AND CULTURAL RESOURCES

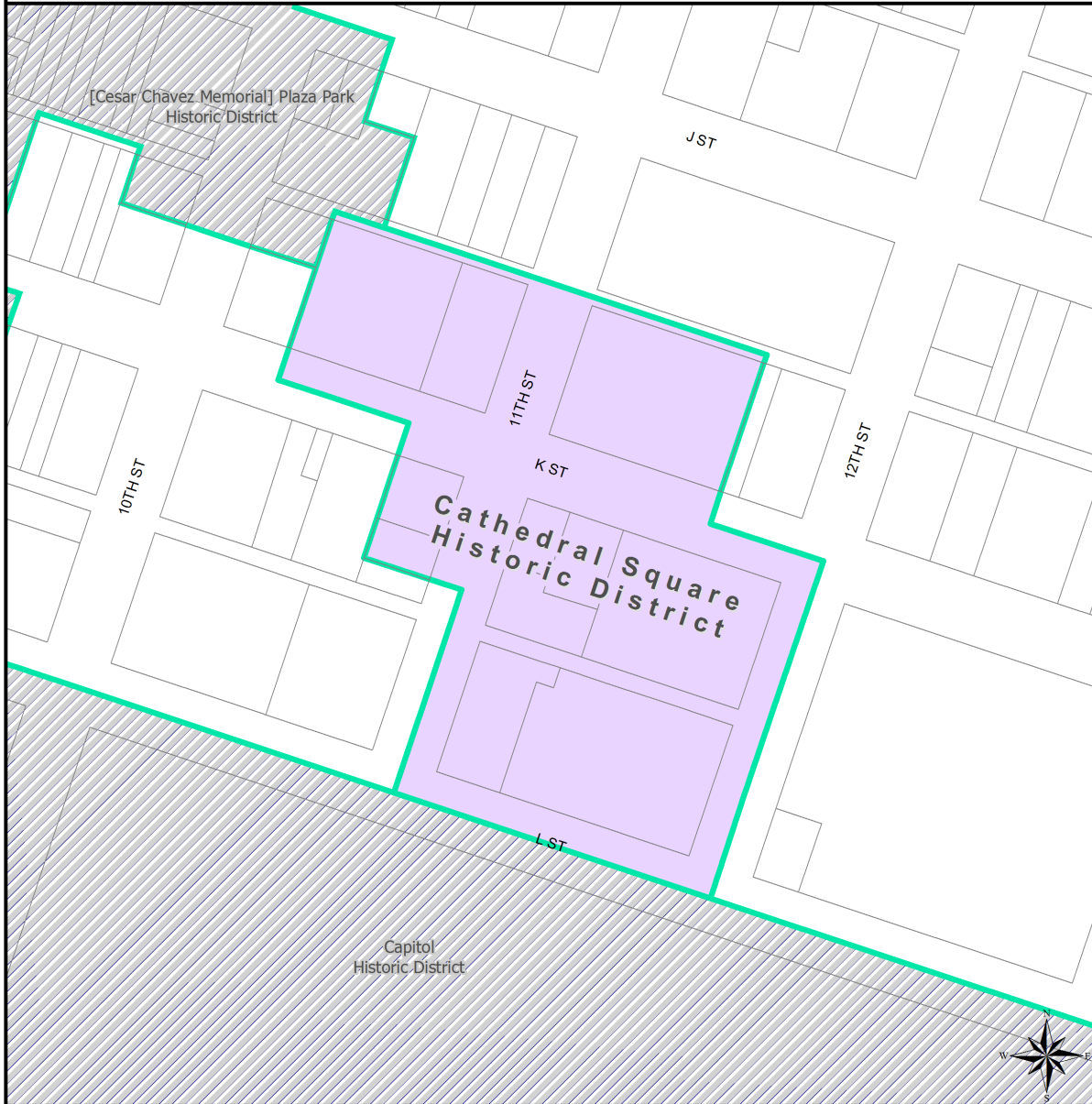
Cathedral Square Historic District

The strongest theme in this District is reflected by the Cathedral of the Blessed Sacrament built in 1887. This structure dominates the view from 11th, 12th and K Streets. The retail and hotel structure facing the Cathedral, even though its use has been changed, still supports the architectural feel of the area. The buildings on 11th and L Streets, and the Senator Hotel Building, even though a block away from the Cathedral, continue the same architectural quality of the District. This architectural elegance reflects to some degree the association of the area to the adjacent Capitol to the south. Although the District is only separated from the Capitol by L Street, it is the heavy landscaping of the Capitol grounds as well as the dramatic change of use that provides the southern boundary.

The Historic District is generally bounded by the K Street alleyway to the north between 10th and 12th Streets and L Street to the south.

Ordinance # 85-076
July 30, 1985

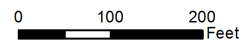
City of Sacramento Historic Resources



Geographic Information System

Cathedral Square Historic District

Ordinance # 85-076 July 30th, 1985



- Parcels
- Cathedral Square
- Other Historic Districts