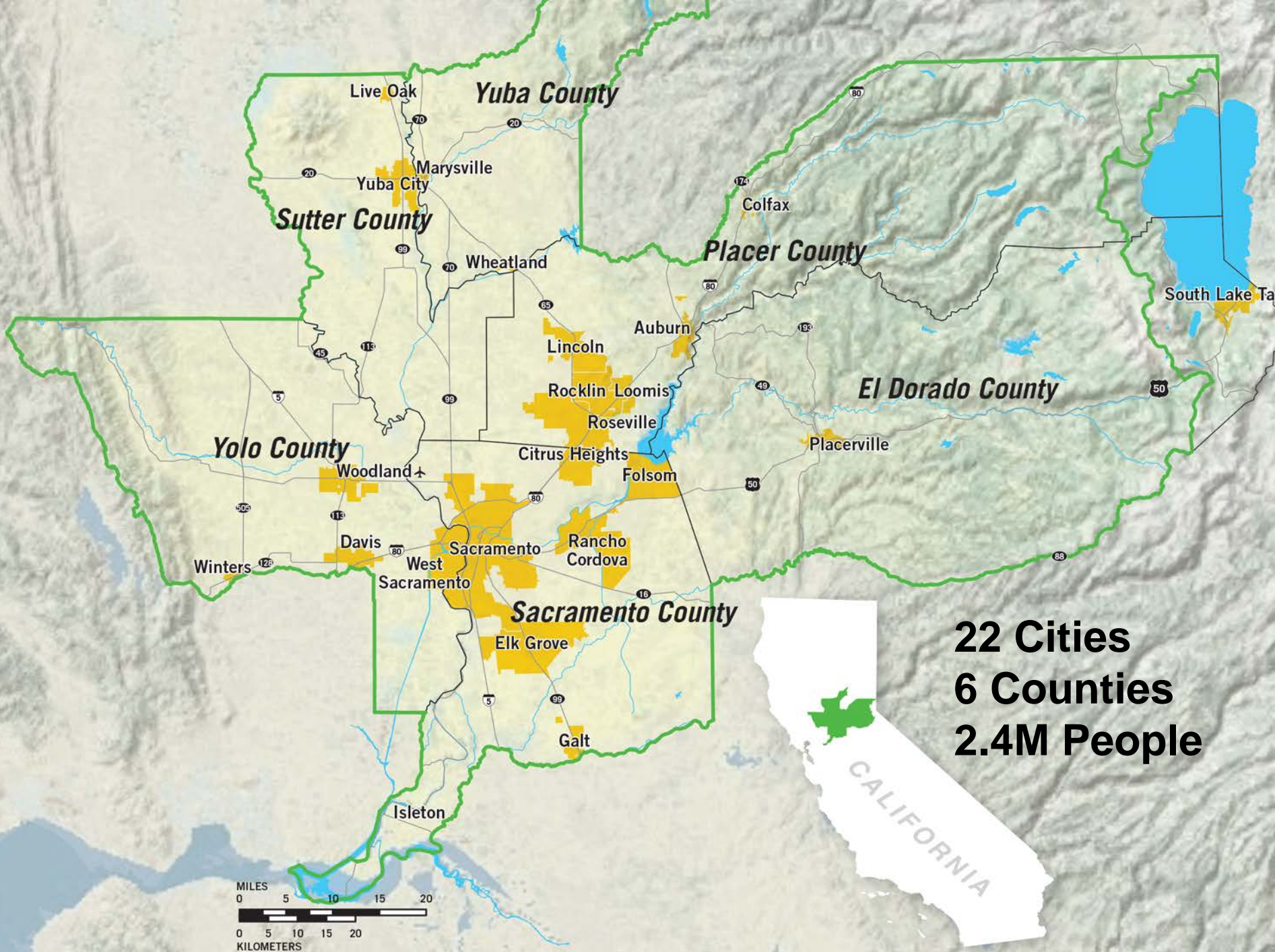


# The Blueprint Vision, SB 375 and the Sustainable Communities Strategy

## 2018 Planning Academy



Sacramento Area  
Council of  
Governments





# Metropolitan Transportation Plan







“Citing Smog And Sprawl,  
Groups To Sue Over Road Projects”

“Pending Suit Stirs Warning  
of Project Snarls”

The Sacramento Bee, 1999

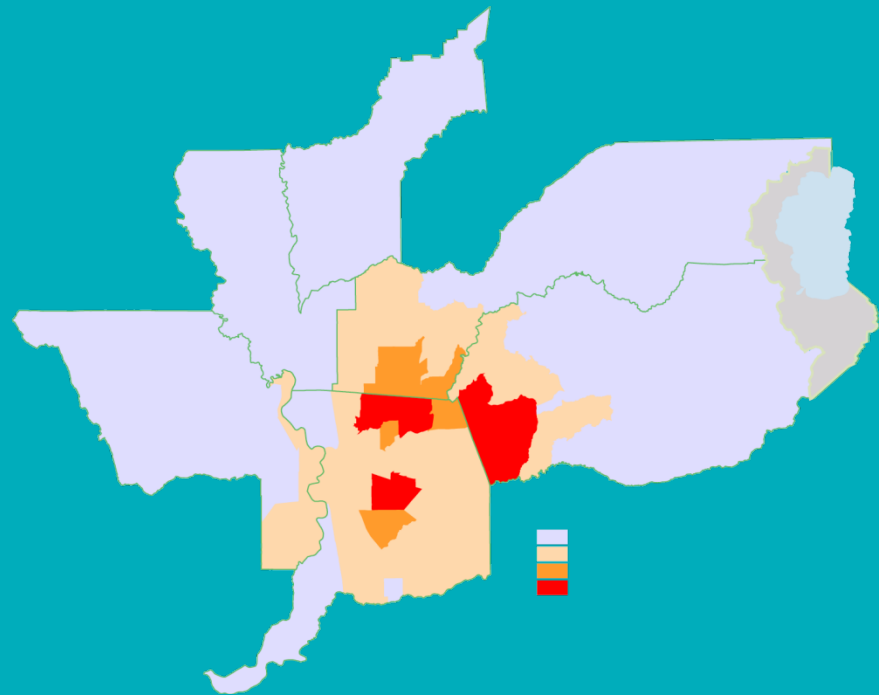
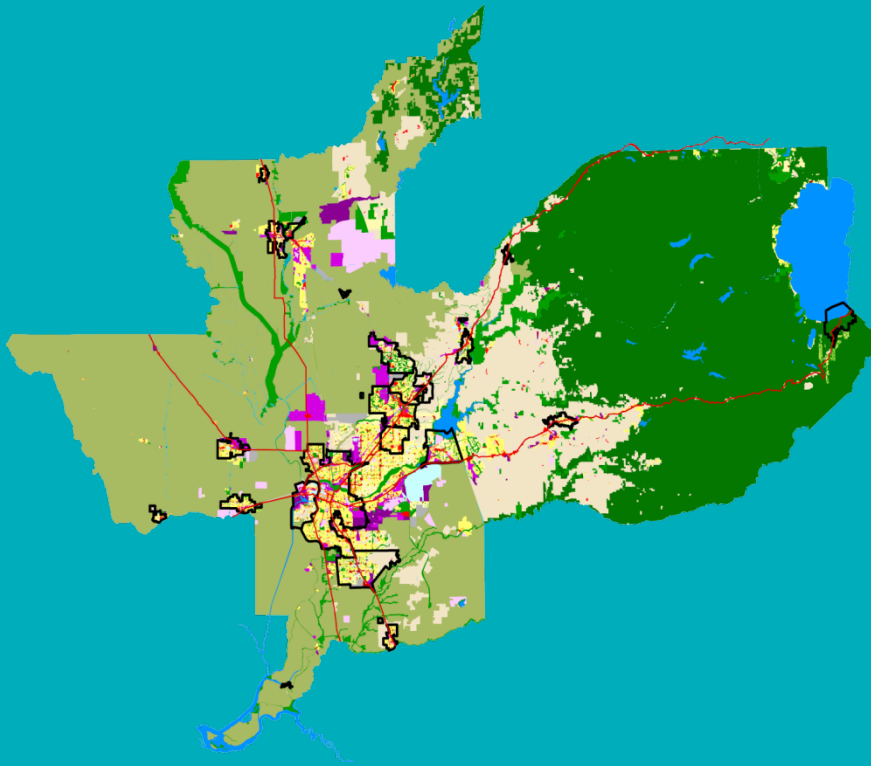
# What's the best way to accommodate growth and improve quality of life?



“What’s this Blueprint project everyone’s talking about?”

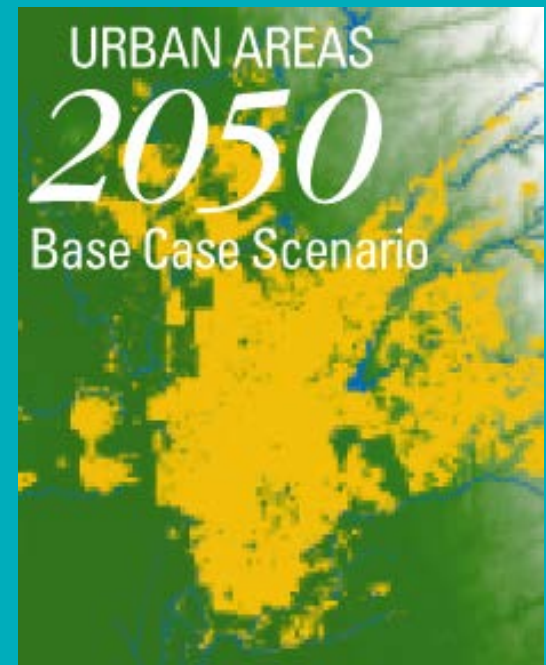
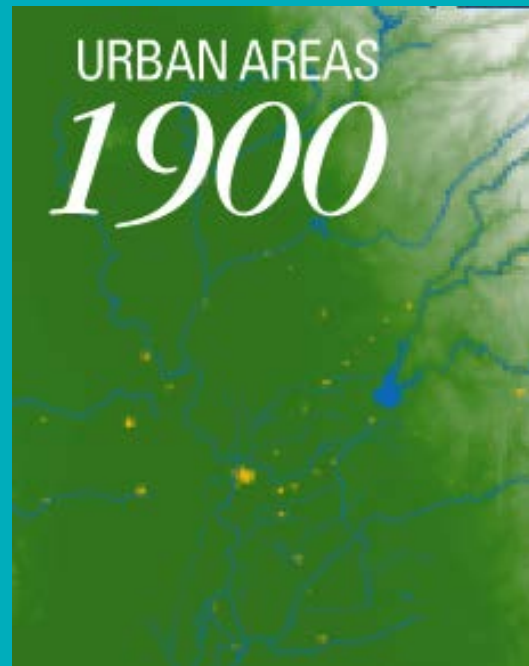
Sacramento Business Journal,  
2002

# Blueprint: Better Data for Better Decision-Making



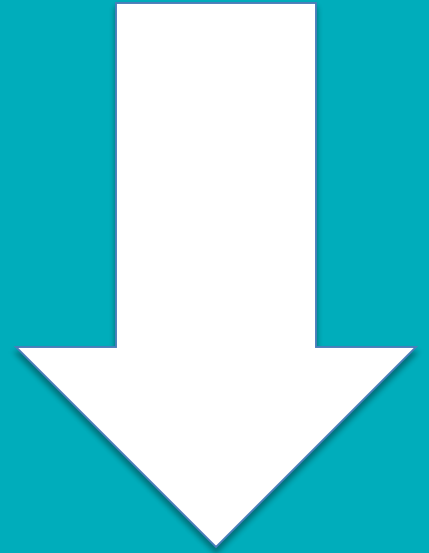


# Urbanization: 1900–2050?



# Base Case Problems

Congestion  
GHG Emissions



Housing Choices  
Transportation Choices  
Farmland  
Open Space  
Natural Resources



# 7 Blueprint Principles

*Transportation  
Choice*

*Quality Design*

*Compact  
Development*

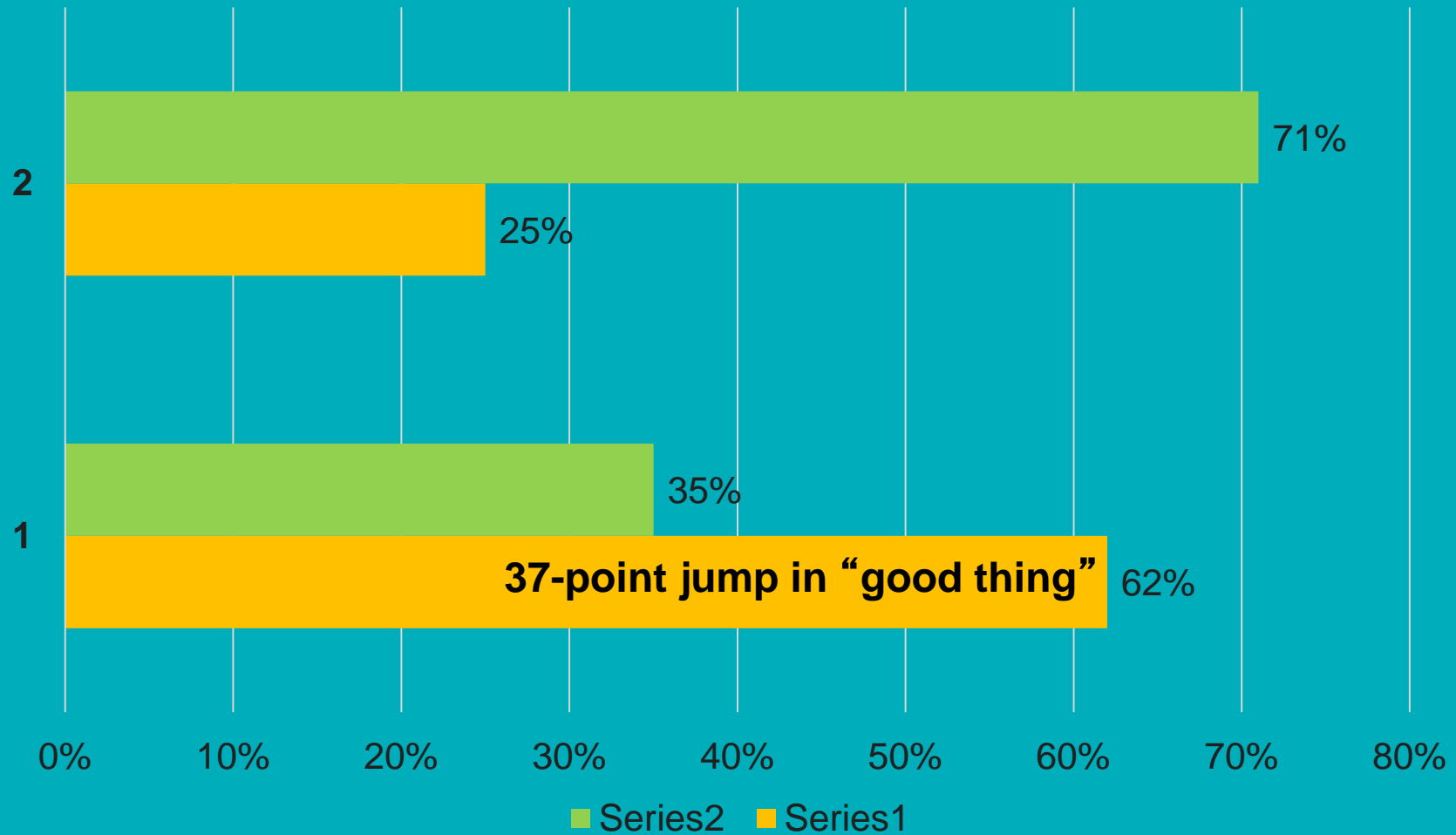
*Use of Existing  
Assets*

*Mixed-Use*

*Natural Resource  
Conservation*

*Housing Diversity*

# Principles Drive Huge Positives for Growth



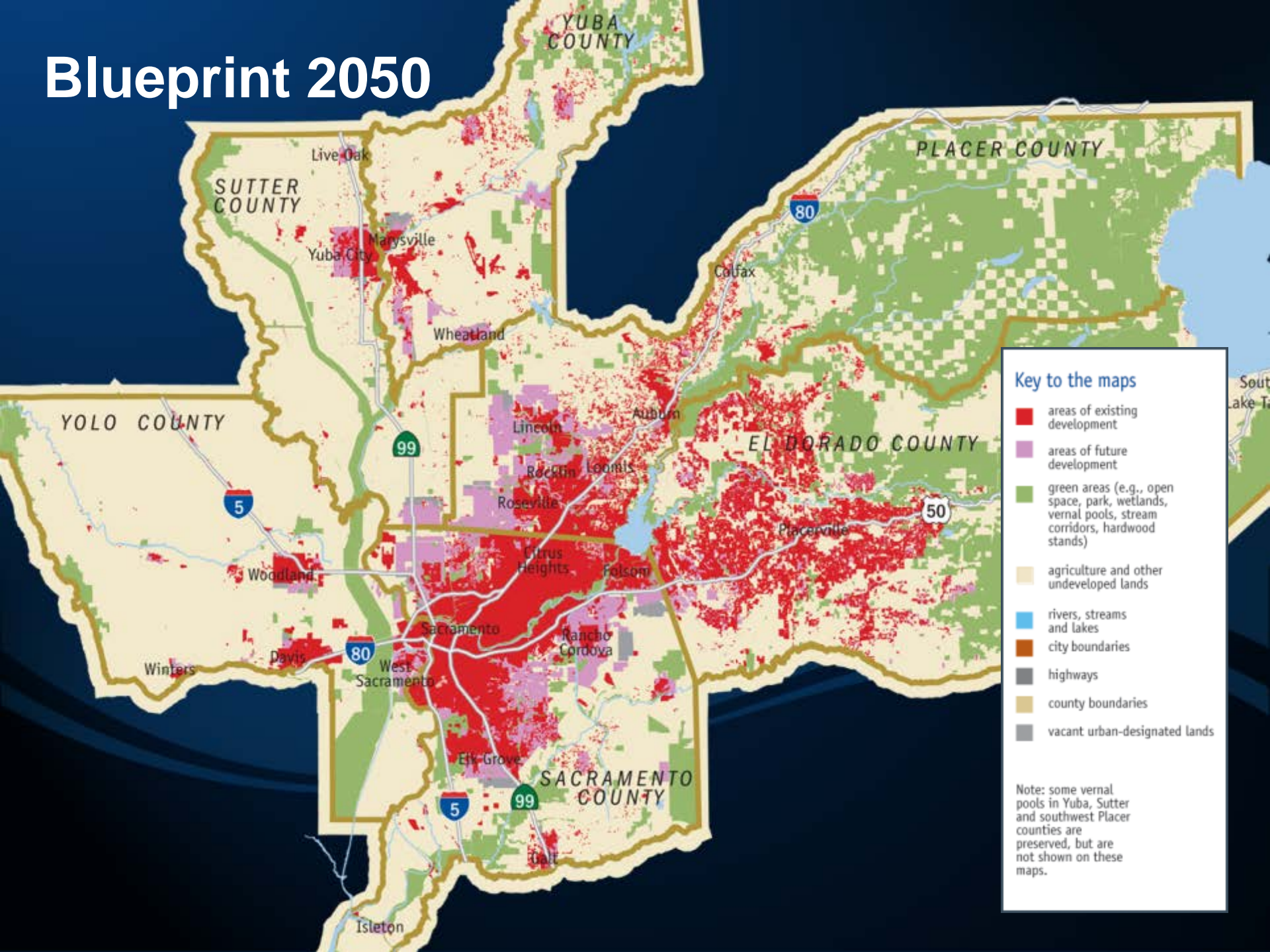
# Broad Public Input

Neighborhood Workshops  
County-scale Workshop  
Regional Forum  
Elected Officials Summit



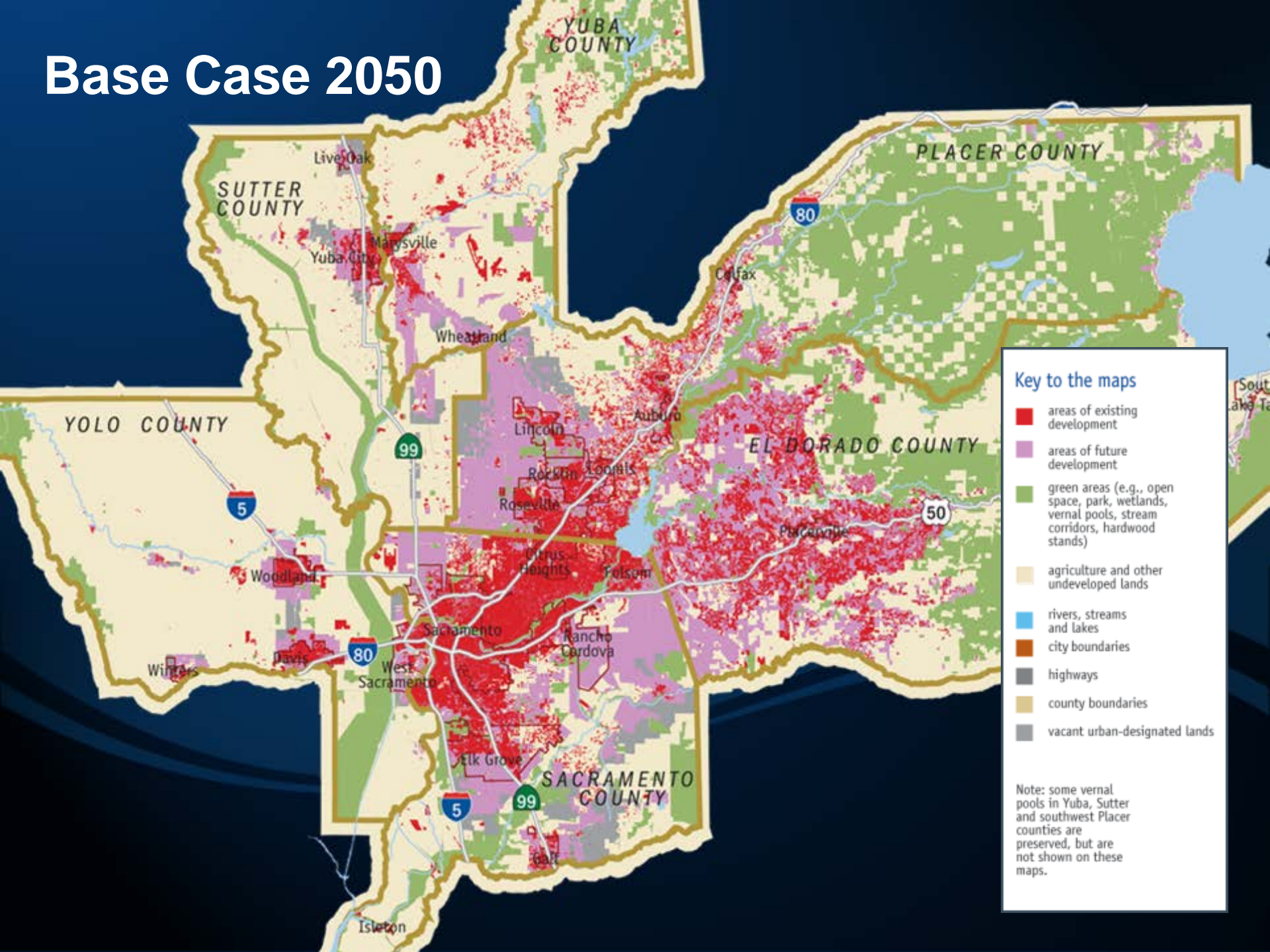


# Blueprint 2050



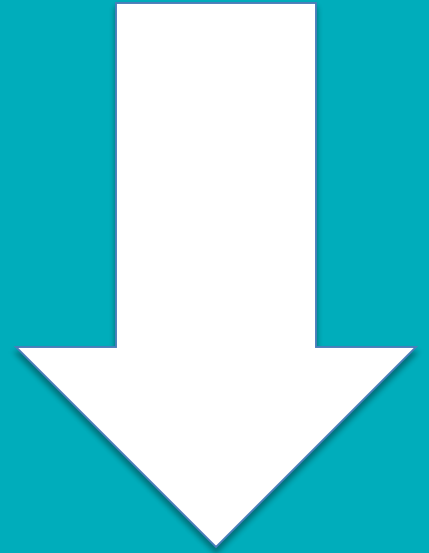


# Base Case 2050



# Base Case Problems


Congestion  
GHG Emissions




Housing Choices  
Transportation Choices  
Farmland  
Open Space  
Natural Resources



# Blueprint Outcomes



Transit, bike, and walk trips  
Medium and high-density  
homes  
Jobs and homes closer together  
Infill and redevelopment



Rate of congestion increase  
Vehicle miles traveled  
Air pollution and Greenhouse gas  
Ag, open space, natural resources lost  
Water consumption

# Organizations that supported the Blueprint planning process



# 2008 Metropolitan Transportation Plan



First MTP to  
reduce  
congestion in  
the future

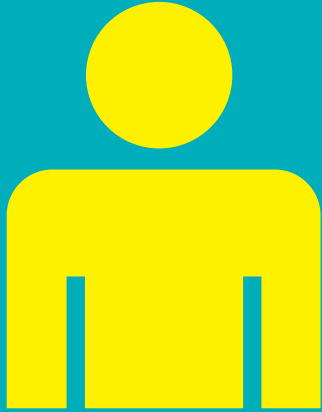


# What is SB 375?

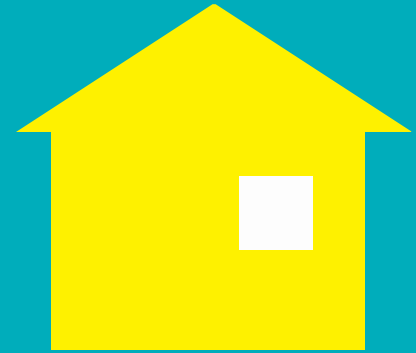
# 2016 Metropolitan Transportation Plan/ Sustainable Communities Strategy



# By 2036 the region will have:



**811,000  
MORE PEOPLE**



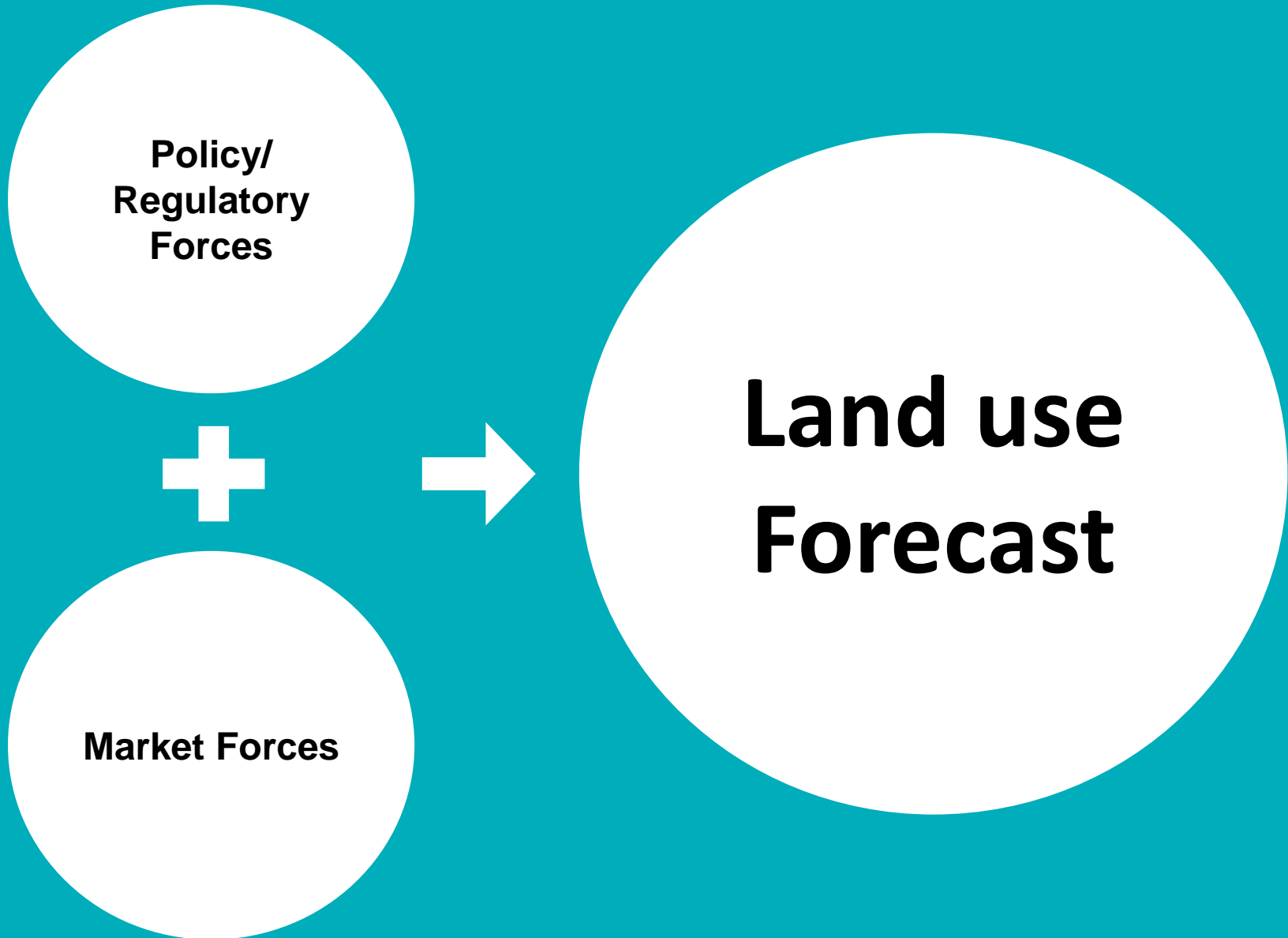
**285,000  
NEW HOMES**



**485,000  
NEW JOBS**



# Regional Land Use Forecast



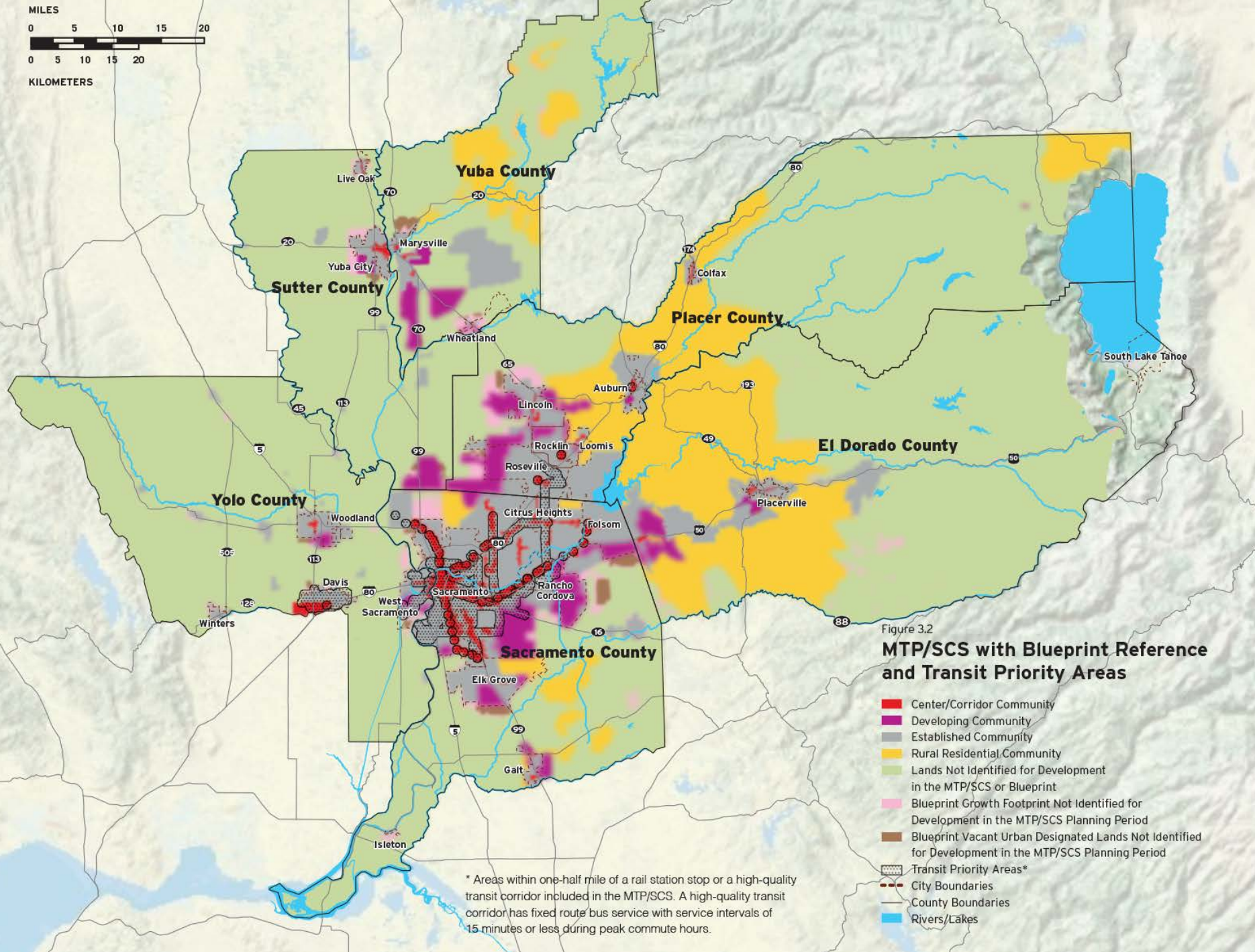
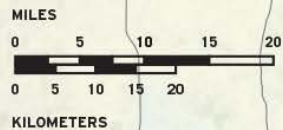
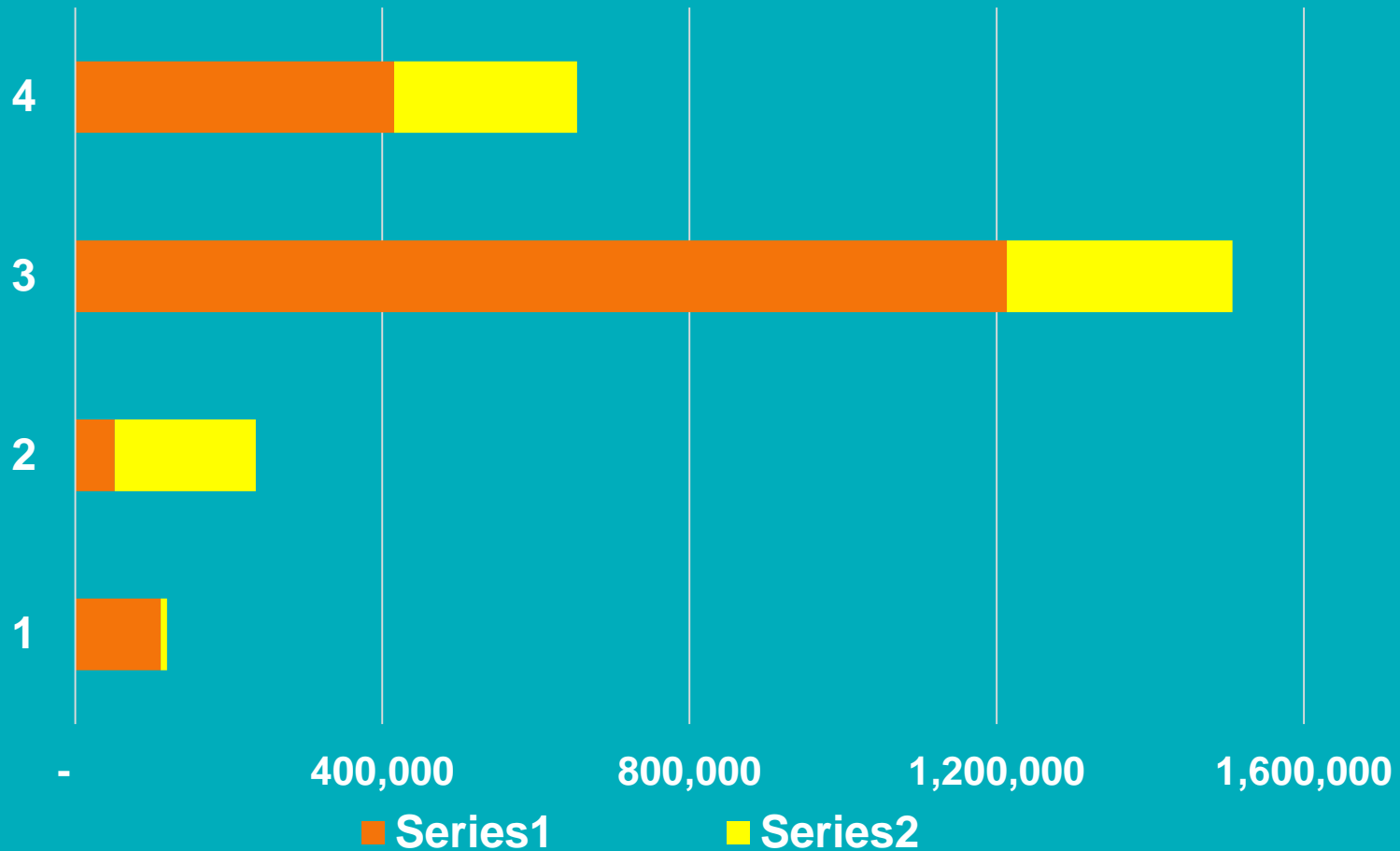


Figure 3.2  
**MTP/SCS with Blueprint Reference  
and Transit Priority Areas**

# Regional Development by community type

























# Transportation Investments

Revenue  
Assumptions



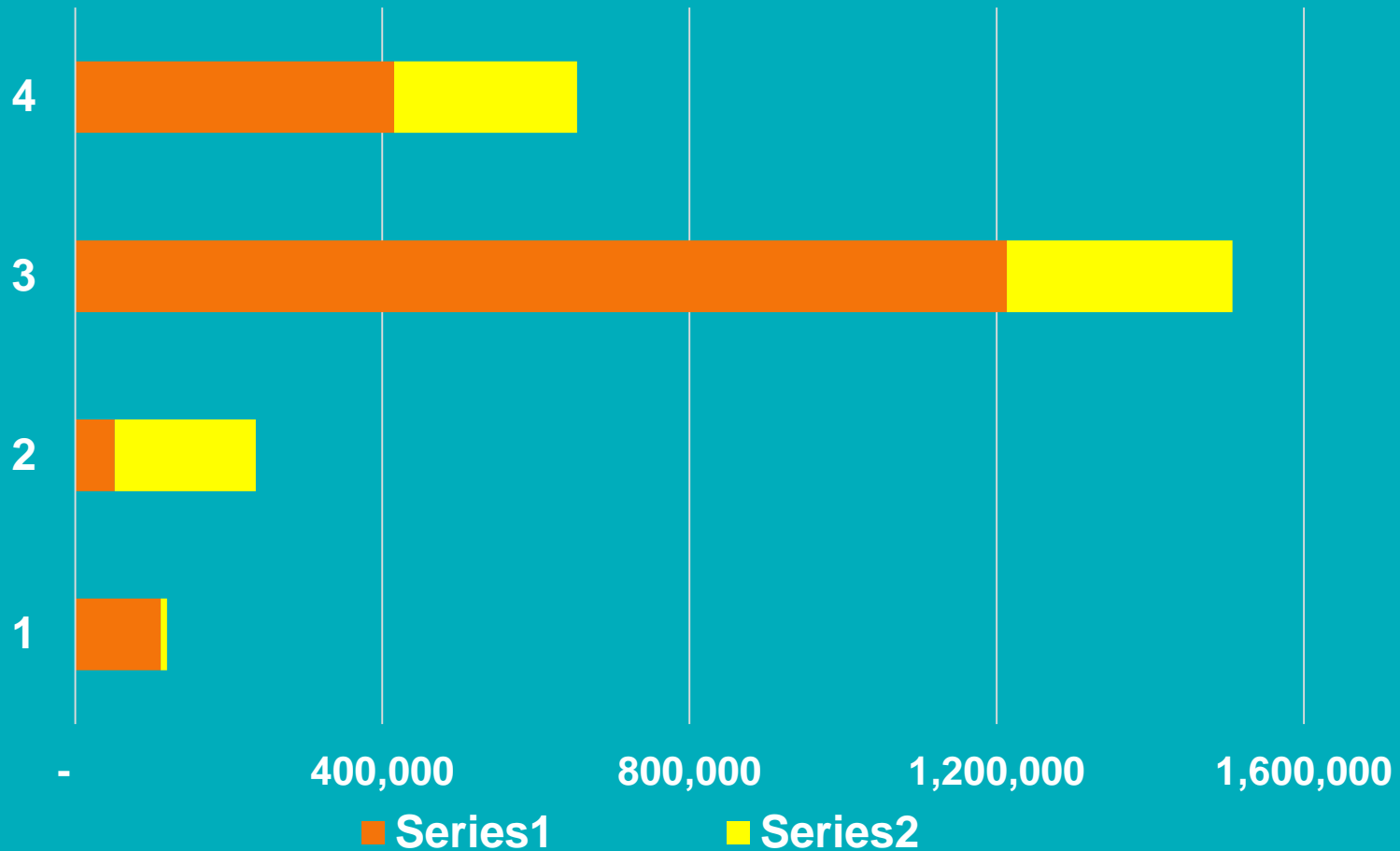
Land Use  
Forecast



# Transportation Investments

Road Maintenance & Rehabilitation	\$12.6 B
Road Capacity	\$7.3 B
Transit	\$10.6 B
Bike/Pedestrian	\$2.8 B
Programs, Planning, Enhancements	\$1.7 B
GRAND TOTALS	\$35.0 B

# Regional Development by community type





# Meets SB 375 GHG Reduction Targets and State and Federal Air Quality Requirements



**Per Capita GHG  
Reduction:**

2020  
-8%

2035  
-16%



# Increased Access to Jobs and Amenities





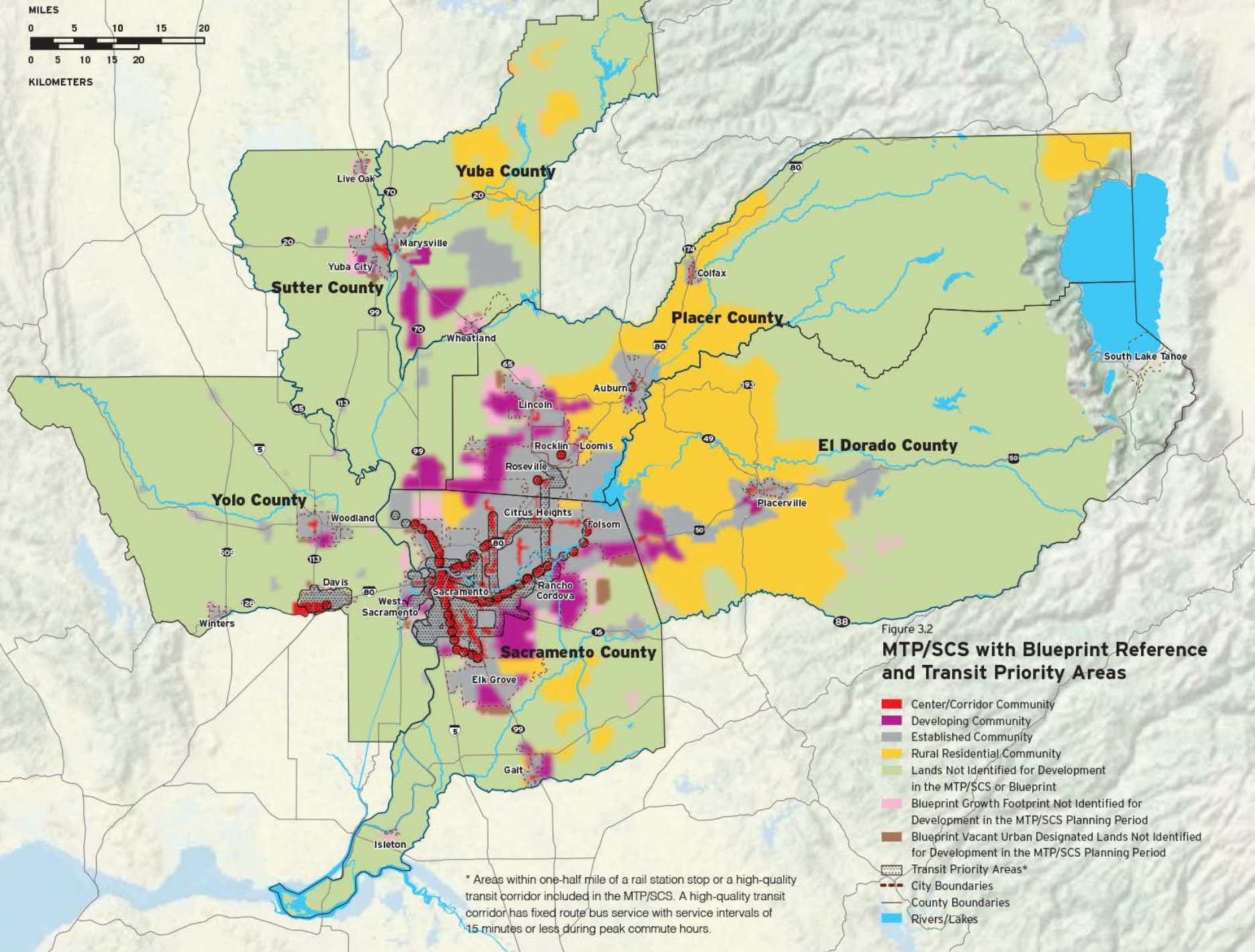
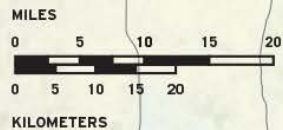
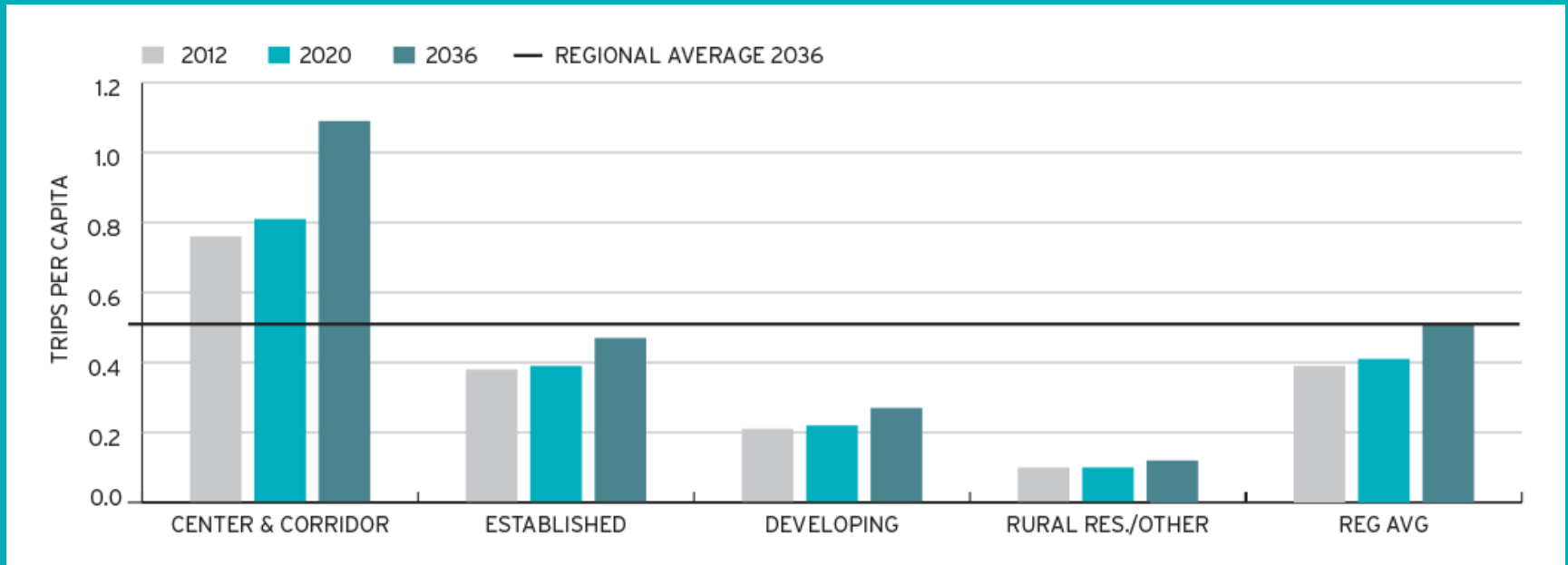


Figure 3.2  
**MTP/SCS with Blueprint Reference  
and Transit Priority Areas**



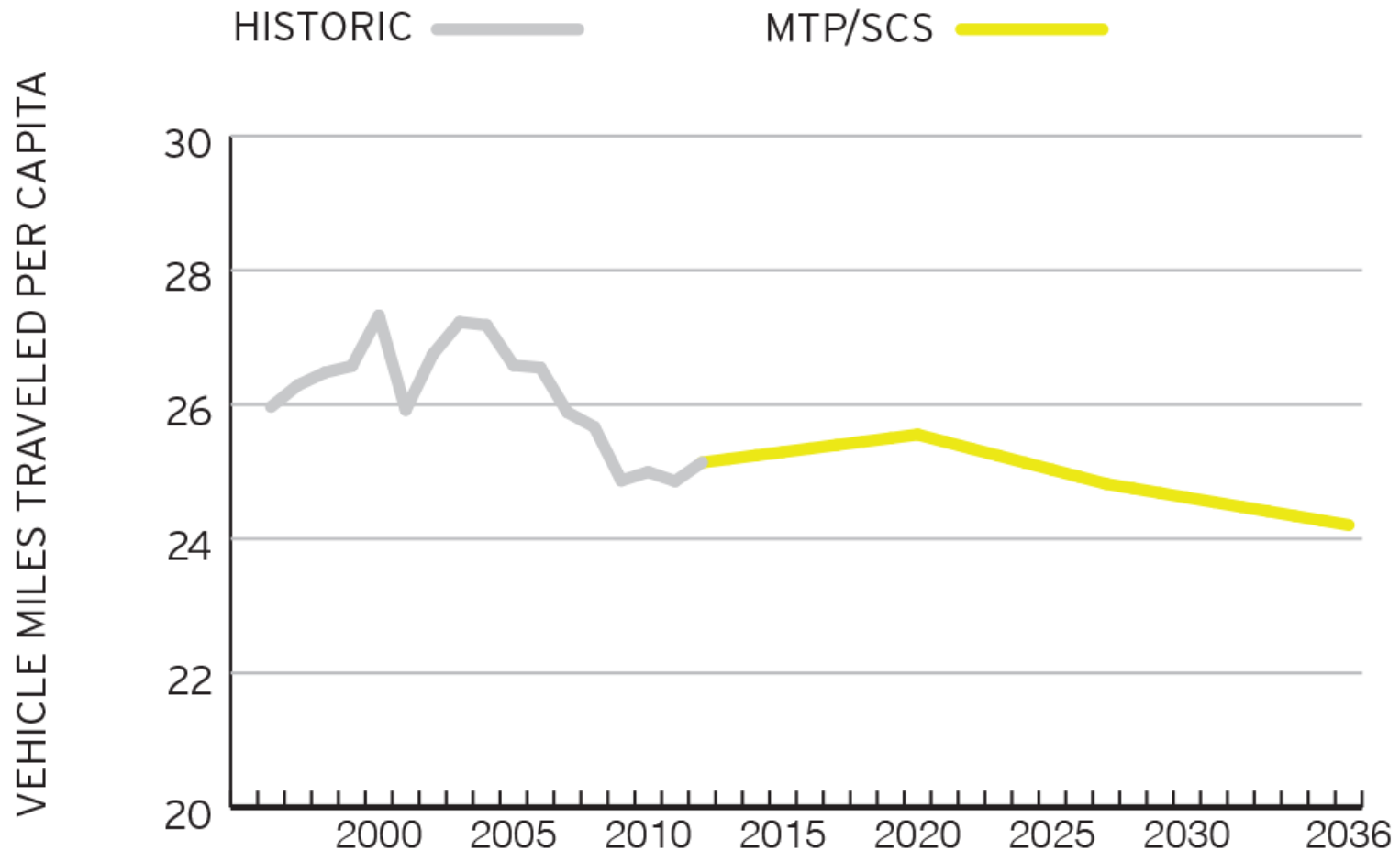
# Transit, Bike, & Walk Trips per Person



# 71% increase in transit productivity



# Vehicle Miles Traveled per Person







**Reduced impacts on farmland.**  
**For every 1,000 new residents:**

**1988–2012**

**285**

**acres**

**2012–2036**

**49**

**acres**

# Thank you!

