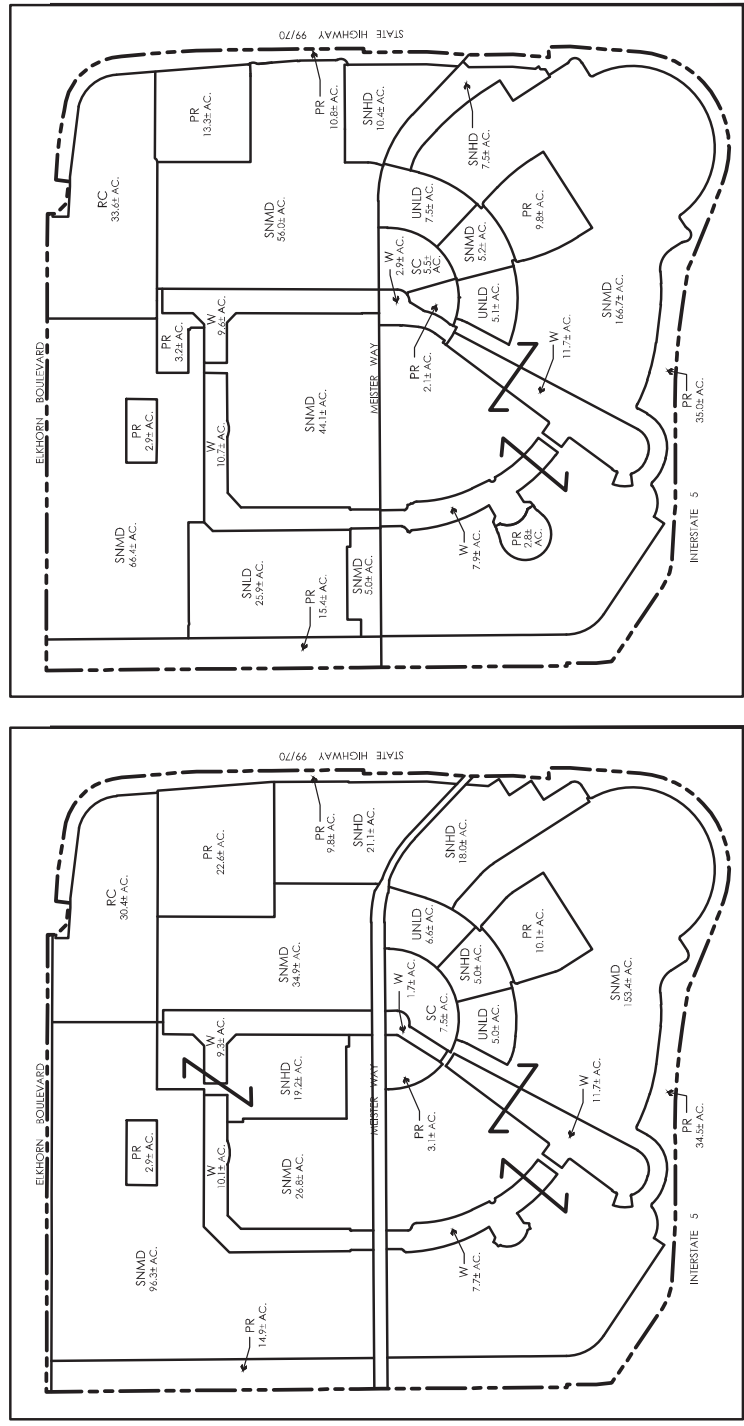


GENERAL PLAN AMENDMENT EXHIBIT GREENBRIAR

CITY OF SACRAMENTO, CALIFORNIA
APRIL 14, 2017



Existing General Plan

Proposed General Plan

GENERAL PLAN AMENDMENT SUMMARY TABLE

GENERAL PLAN DESIGNATION	LAND USE	EXISTING AC	PROPOSED AC	DIFFERENCE AC
SNLD		0 AC	25.9 AC	+ 25.9
SNMD	SUBURBAN NEIGHBORHOOD LOW (8.8 DU/AC)	311.4 AC	343.4 AC	+ 32.0
SNHD	SUBURBAN NEIGHBORHOOD MEDIUM (7-17 DU/AC)	63.3 AC	17.9 AC	- 45.4
UNLD	SUBURBAN NEIGHBORHOOD HIGH (15-30 DU/AC)	11.6 AC	12.6 AC	+ 1.0
PR	URBAN NEIGHBORHOOD LOW (12-36 DU/AC - FAR: 0.50-1.5)	97.9 AC	95.3 AC	+ -2.6
W	PARKS & RECREATION	40.5 AC	42.8 AC	+ 2.3
SC	WATERWAYS	7.5 AC	5.5 AC	- 2.0
RC	SUBURBAN CENTER (15-36 DU/AC - FAR: 0.25-2.0)	30.4 AC	33.6 AC	+ 3.2
MAJOR ROADS	REGIONAL COMMERCIAL (32-80 DU/AC - FAR: 0.25-3.0)	14.4 AC	0.0 AC	- 14.4
TOTAL		577.0 AC	577.0 AC	0.0

