

ORDINANCE NO. 2007-103

Adopted by the Sacramento City Council

December 11, 2007

NOMINATING AND ADDING THE CENTRAL SHOPS HISTORIC DISTRICT TO THE SACRAMENTO REGISTER OF HISTORIC AND CULTURAL RESOURCES AS A HISTORIC DISTRICT (M07-072)

BE IT ENACTED BY THE COUNCIL OF THE CITY OF SACRAMENTO:

SECTION 1

The Sacramento Register of Historic and Cultural Resources is amended by adding the Central Shops Historic District located at 105 Bercut Dr. as a Historic District.

Pursuant to Sacramento City Code Sections 17.134.170 and 17.134.180 and based on the duly noticed hearing conducted by the City Council, and the recommendation from the Preservation Commission, the staff reports and nomination materials attached thereto, and the testimony presented at the hearing on the nomination, the City Council makes the following findings in support of its action to designate the Central Shops Historic District and to place it in the Sacramento Register:

The property meets Criteria i, ii and iii of the Criteria for Sacramento Register Landmark eligibility pursuant to Sacramento City Code Title 17, Chapter 17.134, section 17.134.170-C (1-5):

- A. The nominated resource meets Criterion i for listing on the Sacramento Register: "It is associated with events that have made a significant contribution to the broad patterns of the history of the city, the region, the state or the nation";
- B. The nominated resource meets Criterion ii for listing on the Sacramento Register: "It is associated with the lives of persons significant in the city's past";
- C. The nominated resource meets Criterion iii for listing on the Sacramento Register: "It embodies the distinctive characteristics of a type, period or method of construction";
- D. In addition, the District meets the Requirements and Factors to be Considered outlined in Section 17.134.170(B)(1) and (2):
 - 1. Requirements

- a. The area is a geographically definable area;
- b. The area possesses either:
 - i. A significant concentration or continuity of buildings unified by: a) past events; or b) aesthetically by plan or physical development;
 - ii. The area is associated with an event, person, or period significant or important to city history; or
- c. The designation of the geographic area as a historic district is reasonable, appropriate and necessary to protect, promote and further the goals and purposes of this chapter and is not inconsistent with other goals and policies of the city.

2. Factors to be Considered

- a. The historic district has integrity of design, setting, materials, workmanship and association;
 - b. The collective historic value of the buildings and structures in the historic district taken together may be greater than the historic value of each individual building or structure.
- E. The Historic District Boundaries in the attached map, Exhibit 1, are consistent with Chapter 17.134.170(B) pertaining to Historic District boundaries; and comprises properties located within proposed Lots 12, 13, 14, 20, 21a, 21b, 21c, 22, 23, 24, 25, 26, 27, 28 and 29;
- F. The following Contributing Resources are designated, including the character-defining features listed in Exhibit 2:
- The Car Machine Shop
 - The Planing Mill
 - Privy
 - Car Shop No. 3
 - Blacksmith Shop
 - Paint Shop
 - Erecting Shop
 - Boiler Shop
 - Turntable
 - Water Tower
 - Site Features
- G. Sacramento City Code Section 17.134.180 prescribes that the Significant Feature(s) or Characteristic(s) of the resources to be added to the Sacramento Register shall be identified in the designating Ordinance. The significant features and characteristics of the Central Shops Historic District are included in Exhibit 2.
- H. The nominated resource has important historic or architectural

worth, and its designation as a landmark is reasonable, appropriate, and necessary to protect, promote, and further the goals of this chapter, pursuant to Sacramento City Code Title 17, Chapter 17.134, section 17.134.170-C (b-c).

SECTION 2

The Central Shops are associated with important dates, people and features of the Transcontinental Railroad construction and initial operation, as well as the subsequent development of the nation's railroad system. The Central Shops served as the principal shops of the Pacific Lines of the Southern Pacific system between 1868 and 1990, overseeing subsidiary shops from Portland, Oregon, and Ogden, Utah, to San Francisco and Los Angeles, California, and east to El Paso, Texas, with additional major influence on the shops of the Atlantic Lines through Texas and Louisiana to New Orleans. Through its first 80 years or so the Central Shops complex has been recognized as the largest integrated industrial complex west of the Rocky Mountains, and perhaps west of the Mississippi River. As late as World War II they retained industrial capabilities found nowhere else in the West, such as the ability to produce the giant metal rollers for the wartime Kaiser steel plant built at Fontana in Southern California. The Central Shops were by far the largest single employer in the Sacramento region until after World War II, with workers playing a major part in the economic, social, cultural and political life and development of the Sacramento region. The shops were a major center for innovation, invention and development of railroad and related technologies, and also became an early center for systematic standards, supported by testing, with regional and national impacts. Chief mechanical officers based at Sacramento, notably A. J. Stevens and his successor H. J. Small, gained national recognition, the former for innovation, the latter for standardization. But on the national scene, the most important personage following the original founders of the railroad was E. H. Harriman, who promoted the Sacramento-originated standards all across his railroad system covering over half the country, and who instituted major capital improvements across the system including the last major expansion of the core historic shop buildings preserved today. Architecturally, the shop buildings qualify as being representative examples of typical mid-19th century to late Victorian industrial architecture, with some portions rebuilt in the early 20th century. They feature classic samples of decorative and architectural details from their various periods of construction.

SECTION 3

Adoption of this Historic District promotes the maintenance and enhancement of the significant features and characteristics of the Historic District pursuant to the Secretary of the Interior's Standards for the Treatment of Historic Properties.

Adoption of the Historic District promotes the maintenance and enhancement of the historic materials and fabric, as well as the appearance, of the Historic District.

Adoption of the Historic District is consistent with the City's Preservation Element of the General Plan.

Adoption of the Historic District will afford the property the use of the California Historical Building Code and eligibility for any future preservation incentives that may be adopted for listed properties.

Adoption of the Historic District helps to protect historic resources of the City of Sacramento.

SECTION 4

The Preservation Director of the City of Sacramento is hereby directed to add the Central Shops Historic District to the Sacramento Register.

Table of Contents:

Exhibit A: Map of Boundaries

Exhibit B: Significant Features and Characteristics

Adopted by the City of Sacramento City Council on December 11, 2007 by the following vote:

Ayes: Councilmembers Cohn, Fong, Hammond, McCarty, Pannell, Sheedy, Tretheway, Waters, and Mayor Fargo.

Noes: None.


Abstain: None.

Absent: None.



Mayor Heather Fargo

Attest:



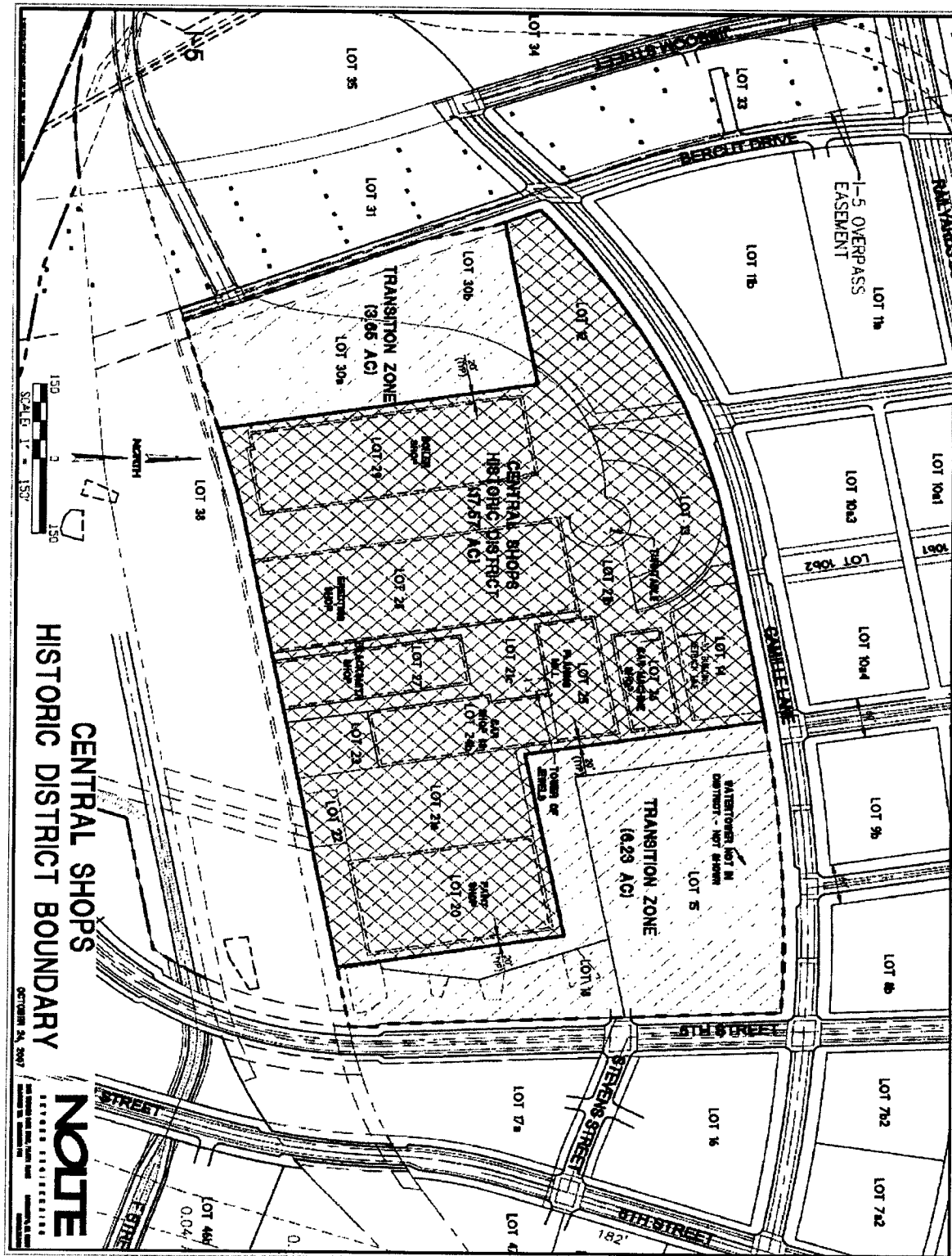
Shirley Concolino, City Clerk

Passed for Publication: November 20, 2007
Published: November 23, 2007

Effective: January 10, 2008

Exhibit A

Map of Boundaries



CENTRAL SHOPS
HISTORIC DISTRICT BOUNDARY

OCTOBER 24, 2007

NOTE
STANDARD CONSTRUCTION
DRAWING PRACTICES

Exhibit B

Significant Features and Characteristics

Sacramento City Code Section 17.134.180 prescribes that the Significant Feature(s) or Characteristic(s) of the resources to be added to the Sacramento Register shall be identified in the designating Ordinance. The significant features and characteristics of the Central Shops Historic District include the following:

Significant Features & Characteristics: All elements, materials, surfaces, and finishes, of the original design of the structures and landscape/site features shall be included. Specific features and elements include:

Car Machine Shop - Exterior

- free-standing building with four principal elevations
- gabled roof form with gabled clerestory running length of the ridge line
- masonry wall structure, common bond brick, with articulated brick piers
- (repeating) arched door and window openings.
- corbelled brick arches over door and window openings
- brick sills
- wood-framed, multi-lite, sash windows, with fixed upper sash, operable lower sash, on first story.
- wood-framed, multi-lite, sash windows, operable on second story
- wood door, hardware and strap hinges (south elevation).
- corrugated metal roof
- roof vents, conical caps
- tracks
- vent grilles
- cast iron tie ends, anchors and anchor plates, and bolts
- remnant cast iron hardware, pintles (upright pivot hinge), other hinges and hooks
- attached ladder
- gabled wood bridge connection to Planing Mill
- signage

Car Machine Shop Interior - First Floor (Level)

- masonry walls brick, painted white.
- engaged masonry (brick) pilasters, painted white.
- exposed second floor framing
- wood posts and brackets
- concrete floor
- tracks
- cast iron wheels, mobile, on tracks (2 sets)
- signage

- large open interior space (open space incorporates all levels/floors)
- extent mechanical equipment

Car Machine Shop - Interior Second Floor (Level)

- masonry walls brick, painted white.
- engaged masonry (brick) pilasters, painted white.
- roof framing and long span truss system
- wood posts and brackets
- wood floor
- wood wall sheathing
- wood casework
- partition walls, wood, inset with multi-lite glazing.
- attic truss system and wood floor/framing
- corrugated metal roof decking
- signage

While the information above lists character-defining features by “floor,” none of the buildings have interior floors, with the exception of the Privy. They are large open spaces, which is a significant character-defining feature of the buildings. The extant mechanical equipment, including cranes, are also character-defining features.

The Planing Mill – Exterior

- free-standing building
- gabled roof form with gabled clerestory running length of the ridge line
- masonry wall structure, common bond brick, with articulated brick piers
- (repeating) arched door and window openings.
- corbelled brick arches over door and window openings
- brick sills
- wood-framed, multi-lite, sash windows, with fixed upper sash, operable lower sash, on first story.
- wood-framed, multi-lite, sash windows, operable on second story
- corrugated metal roof
- roof vents, conical
- tracks
- vent grilles
- cast iron tie ends, anchors and anchor plates, and bolts
- remnant cast iron hardware, pintles (upright pivot hinge), other hinges and hooks
- attached ladder
- gabled wood bridge connection to Car Machine Shop

Planing Mill Interior - First Floor (Level)

- masonry walls brick, painted white.
- engaged masonry (brick) pilasters, painted white.
- long span trusses

- exposed second floor framing
- wood posts and brackets
- suspended, gravity-operated steel fire door
- concrete floor
- tracks, two sets
- large open interior space (open space incorporates all levels/floors)
- extent mechanical equipment

Planing Mill Interior - Second Floor (Level)

- masonry walls brick, painted white
- engaged masonry (brick) pilasters, painted white
- corrugated metal roof decking above ceiling
- roof framing and long span truss system
- wood posts and brackets, decking
- second floor ceiling, tongue-and-groove
- wood flooring
- wood wall sheathing painted white and green.
- wood-framed partition walls and office partitions.
- wood-framed casework and closets.
- suspended, gravity-operated steel fire doors
- swinging doors, half-glazed, pair
- cast iron fire protection threshold
- attic truss system and wood floor/framing

While the information above lists character-defining features by “floor,” none of the buildings have interior floors, with the exception of the Privy. They are large open spaces, which is a significant character-defining feature of the buildings. The extant mechanical equipment, including cranes, are also character-defining features.

Privy - Exterior

- free-standing building with four symmetrical elevations
- gabled roof form
- boxed metal eaves
- masonry wall structure, common bond brick, with articulated brick piers
- stucco finish
- corbelled brickwork at cornice
- (repeating) arched door and window openings.
- recessed door and window openings.
- projecting sills
- wood-framed, multi-lite, sash windows, operable.
- connection to Planing Mill, wood-framed decking
- louvered vents in gable ends
- cast iron tie ends, bolts
- timber roofing members
- metal roof deck

- recessed vertical panels and moldings
- wood sash, double-hung windows
- segmented arched windows with projecting sills
- horizontal encircling belt course

Privy - Interior

- masonry walls brick, painted white.
- wood door and window surrounds
- exposed wood framing/rafters at ceiling
- large interior open space
- extant mechanical equipment

Car Shop No. 3 - Exterior

- double clerestory with low-pitched gabled roof and parapet
- lower level masonry wall structure, common bond brick, with articulated brick piers
- (repeating) arched door and window openings.
- tower, hipped (pyramidal) roof, with corrugated sheet metal siding
- wood "keystones" with painted numbers at each bay
- corbelled brick arches over door openings
- brick sills (west elevation)
- narrow lancet windows
- protective cast iron plates over sills
- wood-framed, multi-lite, sash windows, two-over-two, double-hung.
- wood-framed, multi-lite, clerestory windows.
- wood sash windows, multi-lite (west elevation).
- wood doors, large, squared openings, with diagonal framing.
- construction and inset doors (west elevation)
- concrete lintels (west elevation)
- corrugated metal roof and wall sheathing at elevator tower
- roof vents, conical caps
- exterior metal wall sheathing at second floor
- projecting fire walls, brick
- freestanding, gabled south wall, brick, with ghosted features and infilled arched door and window openings.
- suspended, gravity-operated steel fire doors (south elevation)
- tracks
- attached ladder
- cast iron tie ends, anchors and anchor plates, and bolts
- remnant cast iron hardware, pintles (upright pivot hinge), other hinges and hooks

Car Shop No. 3 Interior - First Floor (Level)

- masonry walls brick, painted white and green
- engaged masonry (brick) pilasters, painted white
- roof framing and tension rod truss system

- ceiling framing/rafters
- wood posts and brackets
- crane, overhead with tracks
- concrete floor
- office partition walls with multi-lite glazing).
- Tracks
- large open interior space(open space incorporates all levels/floors)
- extent mechanical equipment

Car Shop No. 3 Interior - Second Floor (Level)

- masonry walls brick, painted white and green
- engaged masonry (brick) pilasters, painted white
- wood deck roof sheathing
- roof framing and long span truss system
- wood posts and brackets, decking
- wood flooring
- wood-framed partition walls and office partitions
- wood-framed casework and closets.

While the information above lists character-defining features by “floor,” none of the buildings have interior floors, with the exception of the Privy. They are large open spaces, which is a significant character-defining feature of the buildings. The extant mechanical equipment, including cranes, are also character-defining features.

Blacksmith Shop - Exterior

- concrete walls with articulated piers, formwork markings
- steel industrial sash windows, multi-lite, with horizontal pivot, operable
- concrete sills
- gabled roof with gabled clerestory
- corrugated metal siding in gabled end
- roof vents, conical
- original door, wood, hardware and strap hinges
- roof vents
- attached ladder
- remnant signage

Blacksmith Shop – Interior

- concrete walls, painted white
- concrete floor
- crane, overhead
- steel framed roof (northeast addition)
- wood trusses, wood framing
- wood columns
- hewn wood beams
- corrugated transite roofing

- mechanisms to operate clerestory windows
- large open interior space (open space incorporates all levels/floors)
- extent mechanical equipment

Paint Shop - Exterior

- free-standing building with four principal elevations
- masonry wall structure, common bond brick, with articulated brick piers
- (repeating) arched door and window openings.
- arched original door with hardware and strap hinge (west elevation, southernmost bay)
- corbelled brick arches over door and window openings
- “keystones” with painted numbers at each bay
- brick sills
- roof, multi-planed, gabled, hipped and flat
- wood-framed, multi-lite, sash windows
- vent grilles
- cast iron tie ends, anchors and anchor plates, and bolts
- remnant cast iron hardware, pintles (upright pivot hinge), other hinges and hooks
- tracks

Paint Shop Interior - First Floor (Level)

- brick walls, painted white
- corbelled brickwork below infilled openings
- engaged masonry (brick) pilasters, painted white
- interior “passage” with arched openings, infilled and/or glazed.
- interior masonry (brick) partition wall of arches (former south elevation until 1890), painted white.
- industrial sash windows (east elevation).
- wood and steel trusses
- wood posts and brackets
- concrete floor
- large open interior space (open space incorporates all levels/floors)
- Skylights

Paint Shop Interior - Second Floor (Level)

- wood and brick walls, painted white and green
- wood wall sheathing and ceiling
- wood floor
- wood partition walls
- wood casework
- wood posts and brackets
- corrugated metal roof decking
- remnant historic signage (fire escape sign)
- extent mechanical equipment

While the information above lists character-defining features by “floor,” none of the buildings have interior floors, with the exception of the Privy. They are large open spaces, which is a significant character-defining feature of the buildings. The extant mechanical equipment, including cranes, are also character-defining features.

Erecting Shop, Exterior

- brick walls
- steel framing
- metal gable roof over the Engine Rebuild Shop and Component Rebuild Shop
- metal deck roof of the Erecting Bays
- parallel roof systems
- gambrel roof at north end
- gabled clerestory with multi-paned windows.
- exterior articulated bays with arched multi-paned windows and brick pilasters
- brick moldings
- shallow stepped cornice
- double-hung windows with cast iron sills.
- large rectangular windows and articulated bays at east end

Erecting Shop, Interior

- cast iron posts with paired brackets
- exposed wood truss system
- interior bays
- large interior open space (open space incorporates all levels/floors)
- extant mechanical equipment

Boiler Shop, Exterior

- corrugated metal siding
- gable roof
- shed roof extensions on east and west elevations
- window openings
- signage

Boiler Shop, Interior

- wood framed construction
- wood truss ceiling
- large interior open space (open space incorporates all levels/floors)
- extant mechanical equipment
- signage

Turntable

- circular shape
- concrete pit
- tracks
- steel framework

- table
- metal cab

Water Tower

- cylindrical tank of riveted metal panels
- trussed legs

Site Features/Artifacts

- Shed/Firing Line, North of Boiler Shop.
- Control Booth, North of Boiler Shop, north of firing line shed.
- Roundhouse brick foundation-remnant. North of Boiler Shop, north of firing line shed, running in a east-west direction
- Line of Poles. East side of the Erecting Shop.
- Turntable and associated pit and tracks. North of Erecting Shop.
- Three sets of turntable tracks. North of Erecting Shop
- Turntable pit. North of Erecting Shop
- Pipe, Riveted and Sautered. North elevation of Car Machine Shop.
- Water Tank. Northeast of Site
- R-used Tank Car. East of Paint Shop
- Tower for Overhead Wires. South end of Transfer Table between Car Shop No. 3 and Paint Shop
- Anvil/Hammer from Blacksmith Shop. South of Blacksmith and Erecting Shops in area proposed as site of line relocation
- Crane. West Elevation of Car Shop No. 3.
- Air Reservoir. West Elevation of Car Shop No. 3.
- Tracks and Alignments. Run from interior of Car Shop No. 3 east west, across “plaza” into corresponding bay of the Erecting Shop and thru to the Boiler Shop and Paint Shop.
- Transfer Table Pits, between the Boiler Shop and the Erecting Shop.