

City Council Update

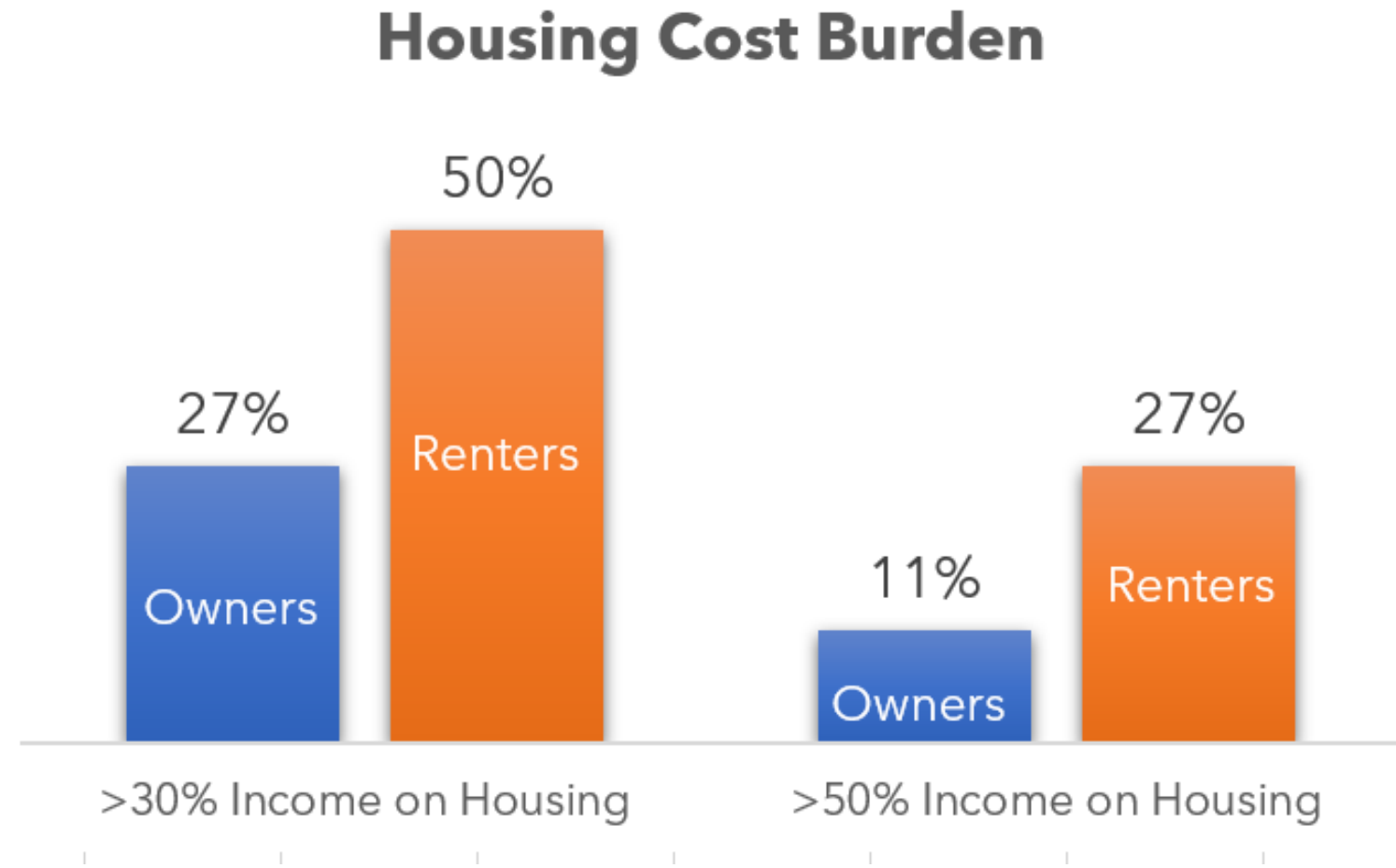
---

# Existing Building Electrification Strategy

September 14, 2021

# Electrification

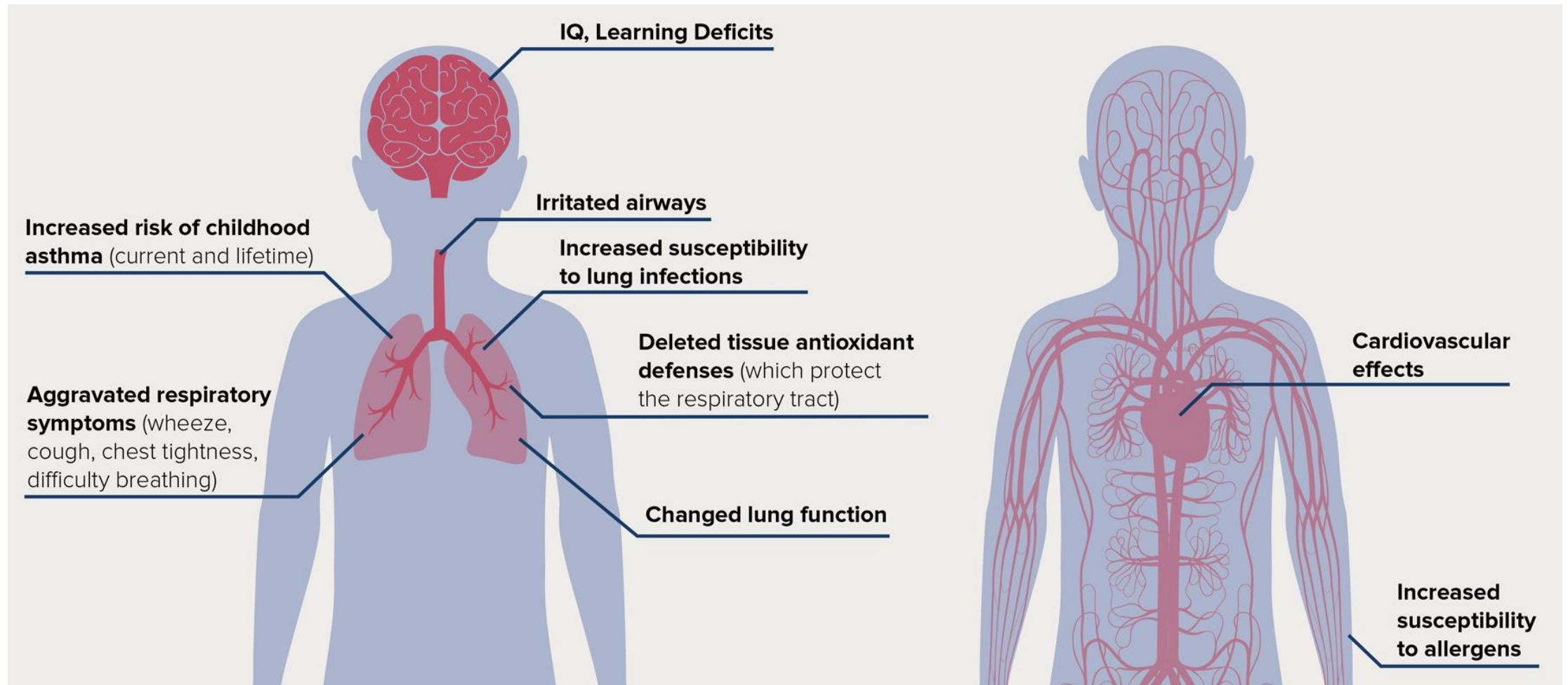
Ensure a collaborative and just decarbonization transition.



Source: American Community Survey (2014-2018), 2018 Sacramento housing cost burden

# Health benefits

Gas stoves increase children's asthma risk by 42%.



# Recap: related efforts



New Building Electrification  
Ordinance

[cityofsacramento.org/  
SacElectrificationOrdinance](https://cityofsacramento.org/SacElectrificationOrdinance)



Water Reuse & Workforce  
Opportunities



Existing Building  
Electrification Strategy

# Recap: related efforts

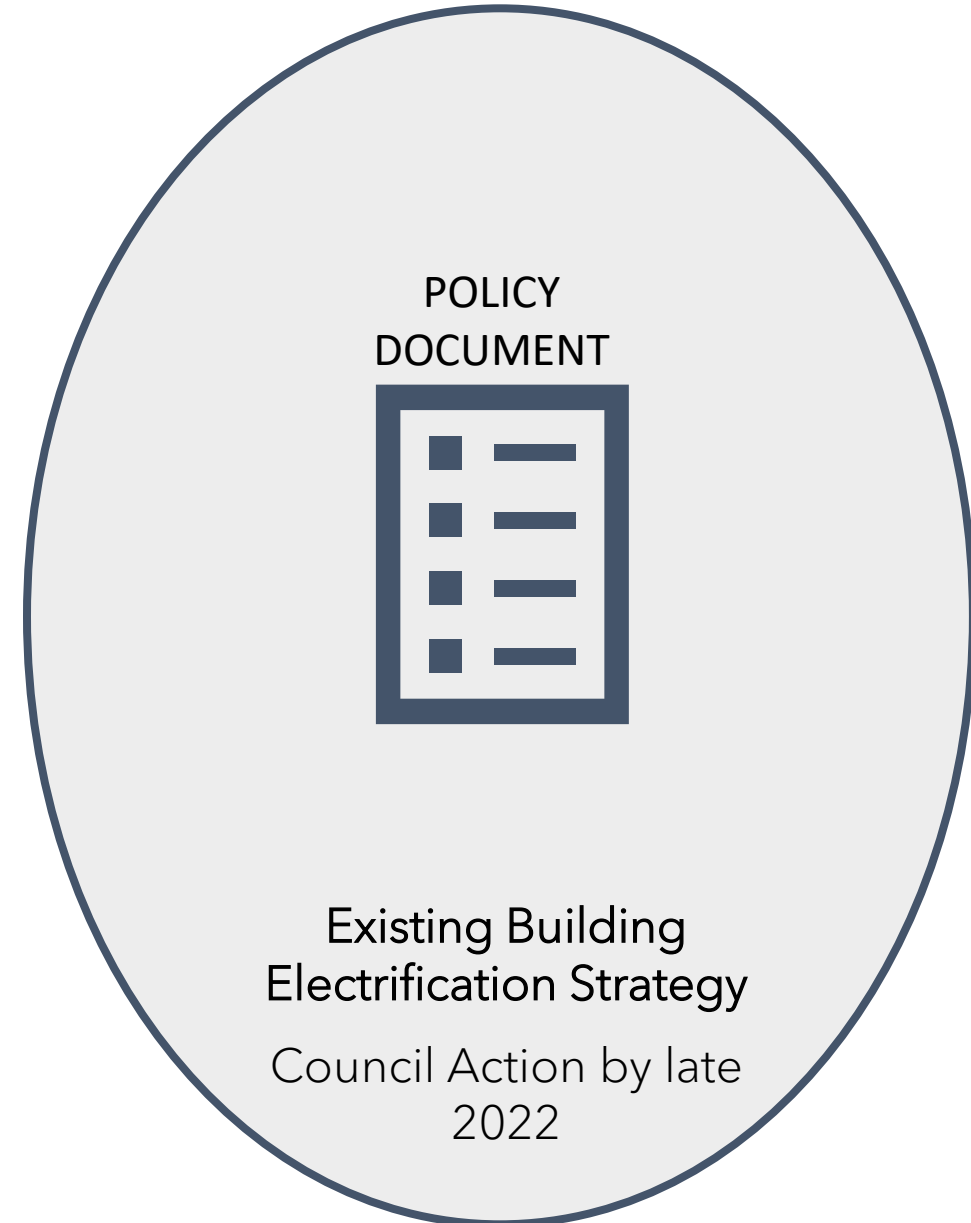


New Building Electrification  
Ordinance

Effective 1/1/23



Water Reuse & Workforce  
Opportunities



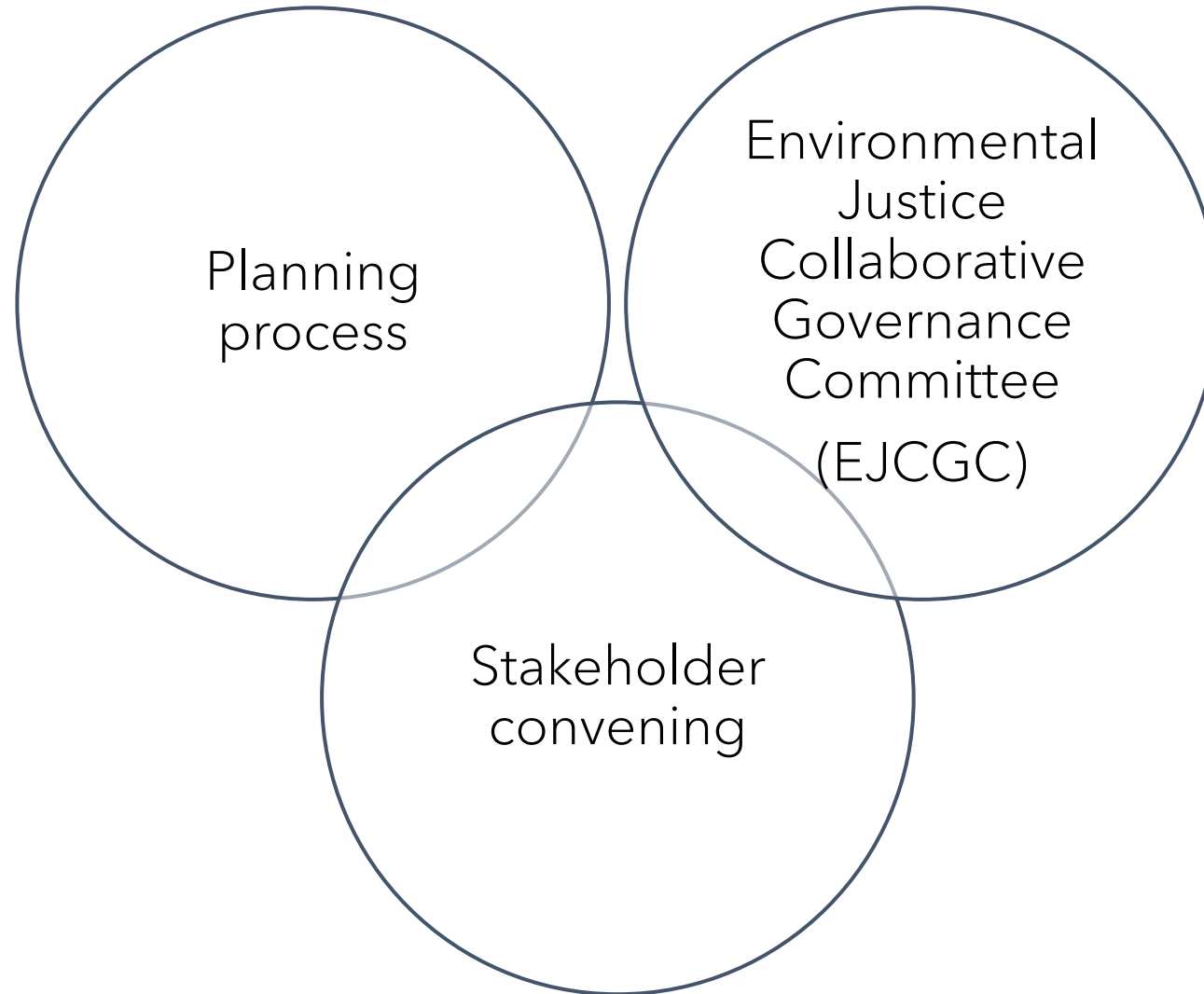
POLICY  
DOCUMENT



Existing Building  
Electrification Strategy

Council Action by late  
2022

# Updates



# Planning process

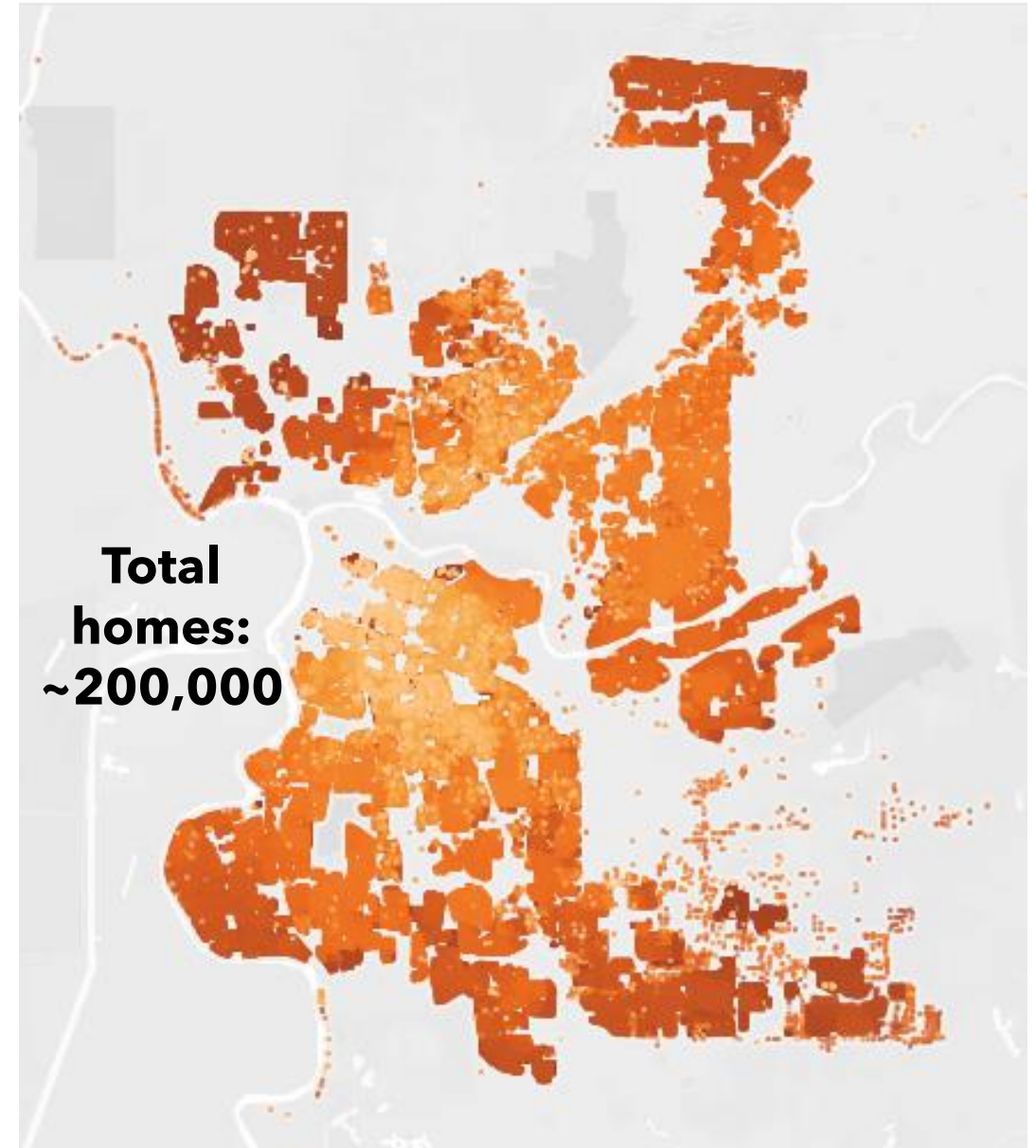
## 2-phase work plan

### ATTACHMENT 3

1. Outreach & analysis
2. Policy document & implementation plan

## SINGLE-FAMILY HOMES BY YEAR BUILT

1900  2020





# EJCGC recommendations

## ATTACHMENT 4

- Holistic & sustained engagement
- Rethink incentives
- Remove participation barriers

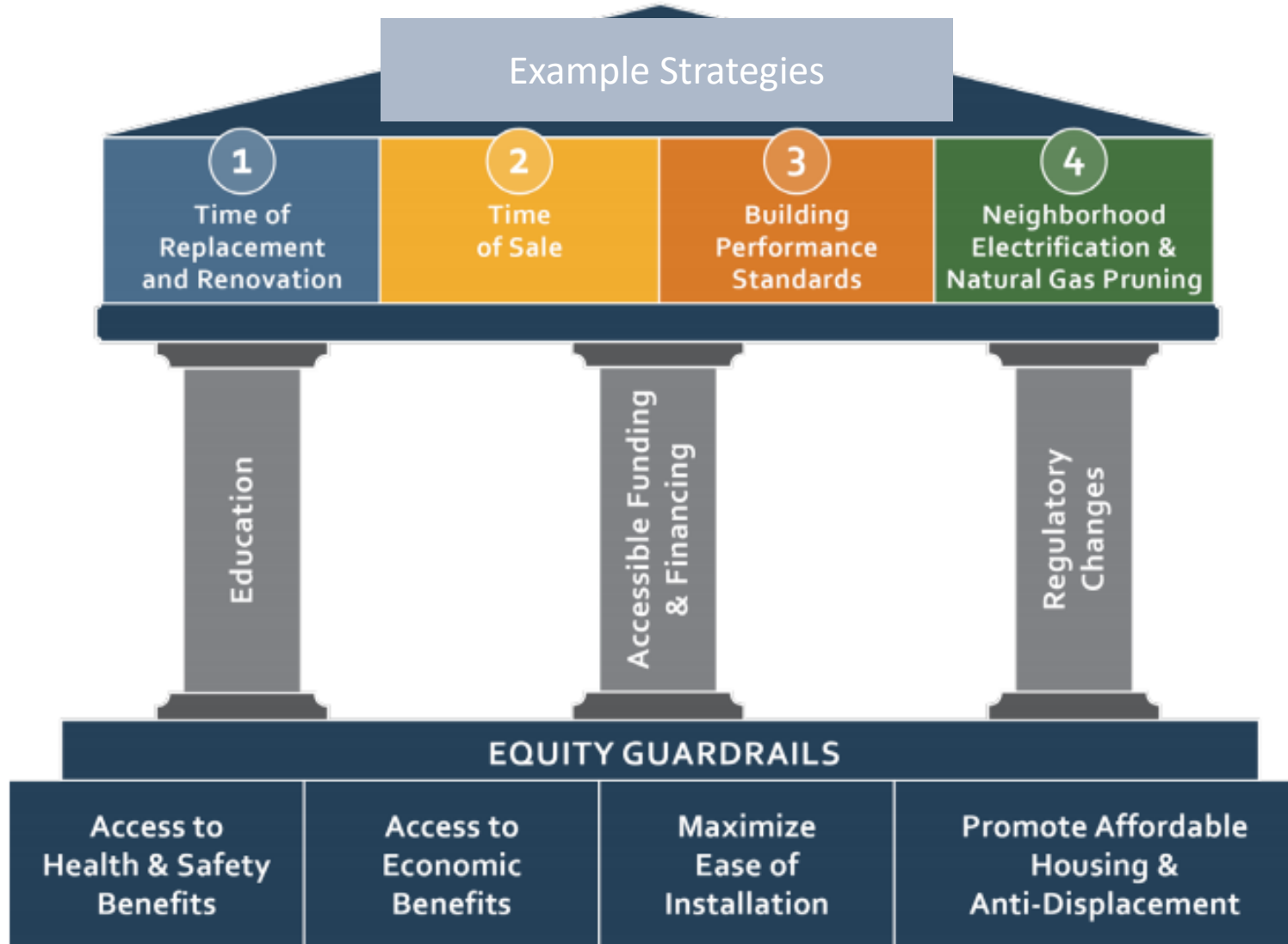
[sacej.org](http://sacej.org)



Sacramento  
Environmental Justice  
Collaborative Governance  
Committee



# Example framework



Source: City of Berkeley (2021). *Draft Existing Building Electrification Strategy*. [cityofberkeley.info/uploadedFiles/Planning\\_and\\_Development/Level\\_3\\_-\\_Energy\\_and\\_Sustainable\\_Development/Draft\\_Berkeley\\_Existing\\_Bldg\\_Electrification\\_Strategy\\_20210415.pdf](https://cityofberkeley.info/uploadedFiles/Planning_and_Development/Level_3_-_Energy_and_Sustainable_Development/Draft_Berkeley_Existing_Bldg_Electrification_Strategy_20210415.pdf)

# Stakeholder feedback

Several key issues and sectors identified.



# Approach

## Phase 1: Outreach and Analysis

- 1.1 Community Engagement Strategy:
- 1.2 Analysis Framework: September 2021
- 1.3 Building Inventory and Market Segmentation Study
- 1.4 Electrification Measures Analysis (Initial Strategy Scan)
- 1.5 Meetings and Presentations

## Phase 2: Final Pathway and Policy Implementation Plan

- 2.1 Stakeholder Engagement, Guidance, and Summary Document
- 2.2 Generation and Analysis of Options
- 2.2 Draft Existing Building Electrification Strategy
- 2.3 Meetings and Presentations
- 2.4 Final Existing Building Electrification Strategy and Policy Implementation Plan



## POLICY DOCUMENT



# Approach

## Phase 1: Outreach and Analysis

- 1.1 Community Engagement Strategy
- 1.2 Analysis Framework
- 1.3 Building Inventory and Market Segmentation Study
- 1.4 Electrification Measures Analysis (Initial Strategy Scan)
- 1.5 Meetings and Presentations

## Phase 2: Final Pathway and Policy Implementation Plan

- 2.1 Stakeholder Engagement, Guidance, and Summary Document
- 2.2 Generation and Analysis of Options
- 2.2 Draft Existing Building Electrification Strategy
- 2.3 Meetings and Presentations
- 2.4 Final Existing Building Electrification Strategy and Policy Implementation Plan



## POLICY DOCUMENT

- Sectors
- Cost & impacts
- Retrofit approach
- Funding resources
- Regulatory and legislative issues

# Next steps

- September 2021: Contract for Existing Building Electrification Strategy
- **October 2021: Update to City Council on Climate Action & Adaptation Plan**
- Fall 2021: Community engagement strategy and analysis framework
- **Late 2021: Update to City Council**
- Winter 2021 - Spring 2022: Electrification measures and policy analysis
- **Spring 2021: Update to City Council**
- Summer 2022: Draft Existing Building Electrification Strategy
- Fall 2022: Final Existing Building Electrification Strategy
- **Late 2022: Recommendation to City Council**

[cityofsacramento.org/SacExistingBuildingElectrification](https://cityofsacramento.org/SacExistingBuildingElectrification)

# Energy use

- 38% of total greenhouse gas emissions

**2016 Community GHG Emissions**  
metric tons of carbon dioxide equivalent (MTCO<sub>2</sub>e)

