

AMENDED ASSESSMENT DIAGRAM
AMENDING ASSESSMENT NO(s). (Assessment Numbers)
(Title of District)
CITY OF SACRAMENTO
COUNTY OF SACRAMENTO, STATE OF CALIFORNIA
SHEET 1 OF (?)

CLERKS CERTIFICATE AND MAP
FILING STATEMENT:

THIS AMENDED ASSESSMENT DIAGRAM AMENDS THE ASSESSMENT DIAGRAM OF (insert district title), CITY OF SACRAMENTO, COUNTY OF SACRAMENTO, STATE OF CALIFORNIA, BY AMENDING THE ASSESSMENT DIAGRAM WHICH WAS RECORDED ON THE ____ DAY OF ____ 2007, IN BOOK ____ OF MAPS OF ASSESSMENT AND COMMUNITY FACILITIES DISTRICTS, AT PAGE ____ THEREOF IN THE OFFICE OF THE COUNTY RECORDER OF THE COUNTY OF SACRAMENTO, STATE OF CALIFORNIA.

FILED IN THE OFFICE OF THE CITY CLERK OF THE CITY OF SACRAMENTO, COUNTY OF SACRAMENTO, STATE OF CALIFORNIA THIS ____ DAY OF _____, 2007.

 CITY CLERK, CITY OF SACRAMENTO

SPECIAL DISTRICTS RECORDING STATEMENT:

RECORDED IN THE OFFICE OF THE SPECIAL DISTRICTS UNIT OF THE PLANNING DEPARTMENT OF THE CITY OF SACRAMENTO, COUNTY OF SACRAMENTO, STATE OF CALIFORNIA, THIS ____ DAY OF _____, 2007

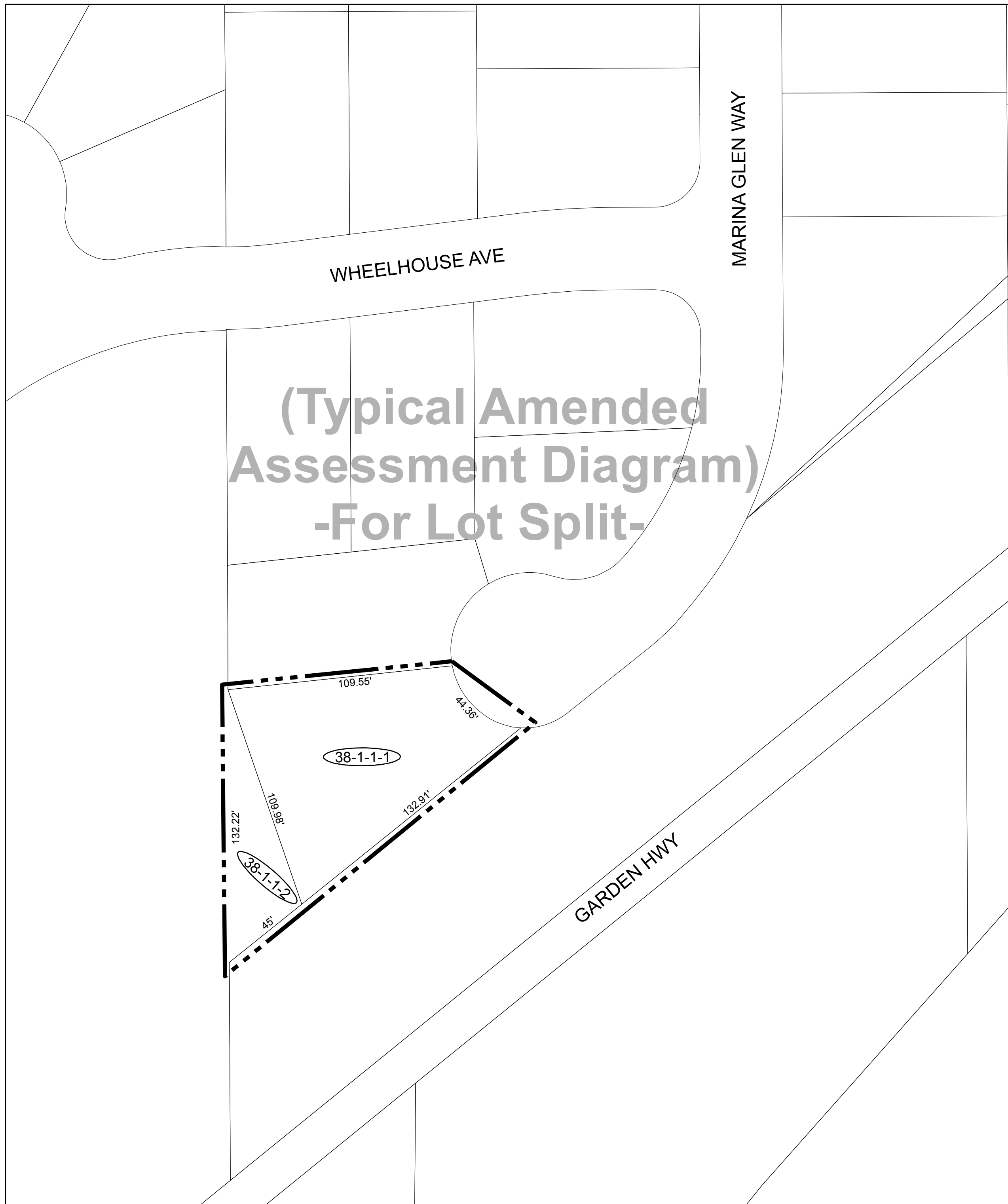
 DIRECTOR OF THE PLANNING DEPARTMENT,
 CITY OF SACRAMENTO, CALIFORNIA

COUNTY RECORDER'S FILING STATEMENT:

FILED THIS ____ DAY OF _____, 2007 AT THE HOUR OF ____ O'CLOCK ____ M. IN BOOK ____ OF MAPS OF ASSESSMENT DISTRICTS AND COMMUNITY FACILITIES DISTRICTS AT PAGE ____ IN THE OFFICE OF THE COUNTY RECORDER OF THE COUNTY OF SACRAMENTO, STATE OF CALIFORNIA.

 COUNTY RECORDER OF THE COUNTY OF SACRAMENTO, CALIFORNIA

BY: _____



	Boundary Line
	Boundary Of Reassessment
	Amended Assessment Number

